



# From industrial city to city of knowledge

---

- Sustainable urban development as a motto
- Investments: university college, new city library and the housing fair Bo01, transformation of Western harbour
- 2000 Öresund Link inaugurated
- 2010 The City Tunnel is opened
- 2014 The Malmö Express (BRT-system)

Photo: Chief



















Malmö stad  
Samkommunens förhållanden  
planera och utveckla Malmöregionen  
och Skåne  
Knut Hultén 2015  
Fotografier: 020 34 45 00  
www.malmo.se/forhållanden  
E-post: skanska@malmo.se





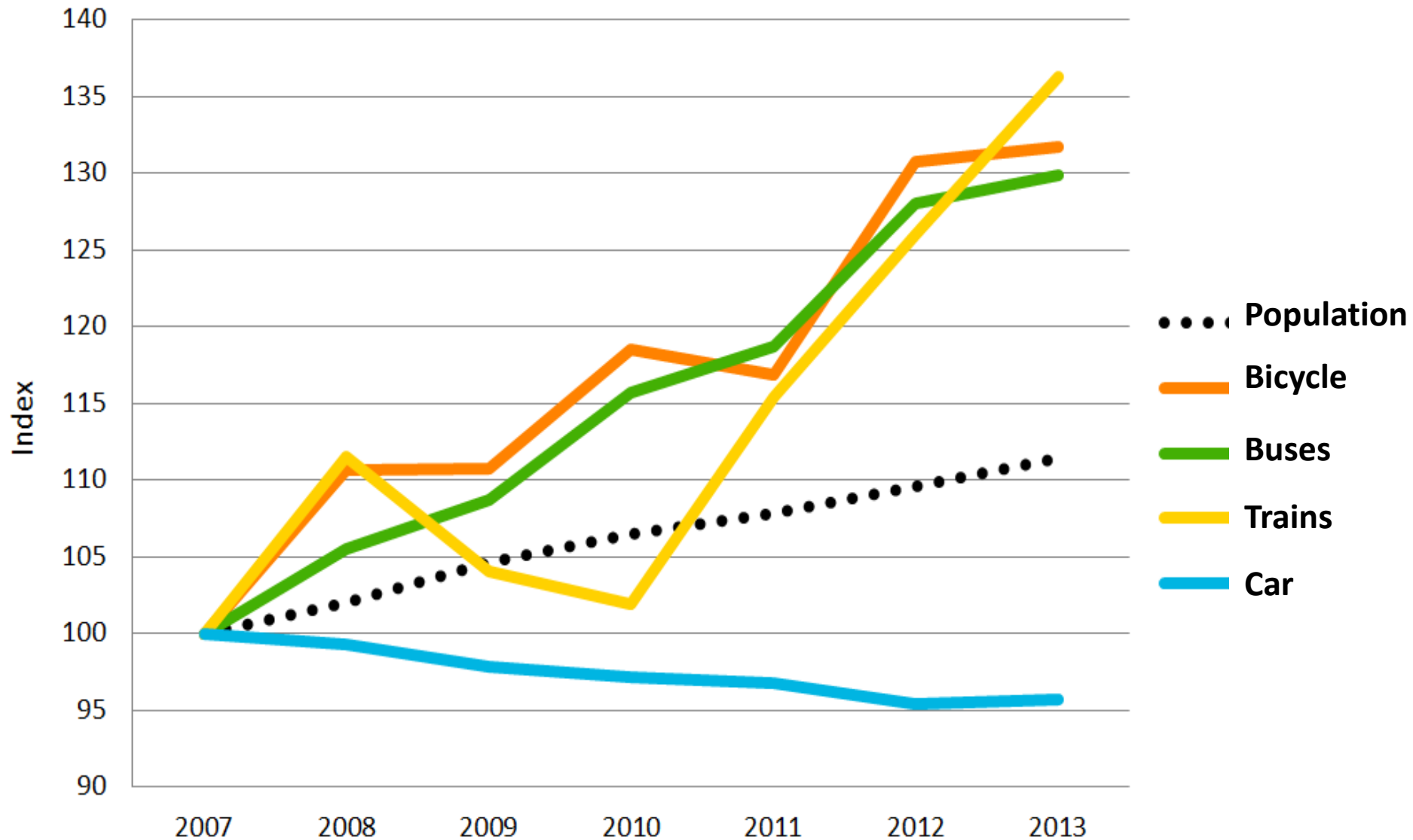
# A young, global and growing city in a growing region

---

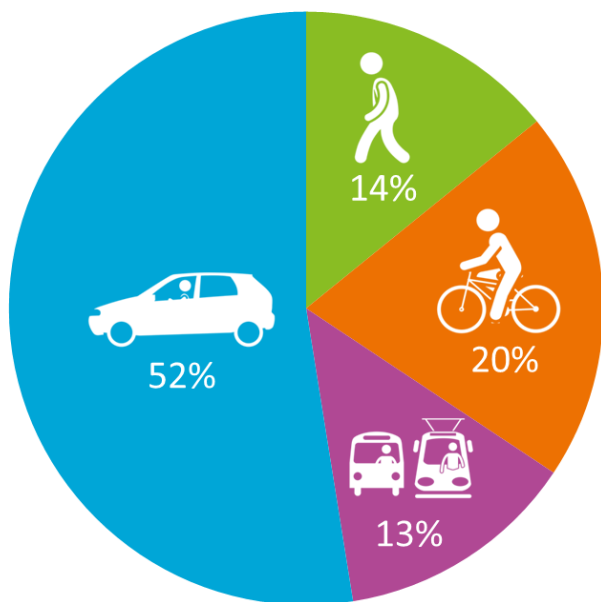
- Sweden's third largest city, growing fast
- 31 % of inhabitants foreign born from 177 countries, 150 languages
- 328,000 inhabitants, half under 35
- In region of 3.8 million inhabitants, 1.3 million on Swedish side
- 250,000 companies with 1.8 million employees
- 14 universities with 140,000 students
- 11 million people commute by train over Öresund Bridge every year

# Traffic development since 2007

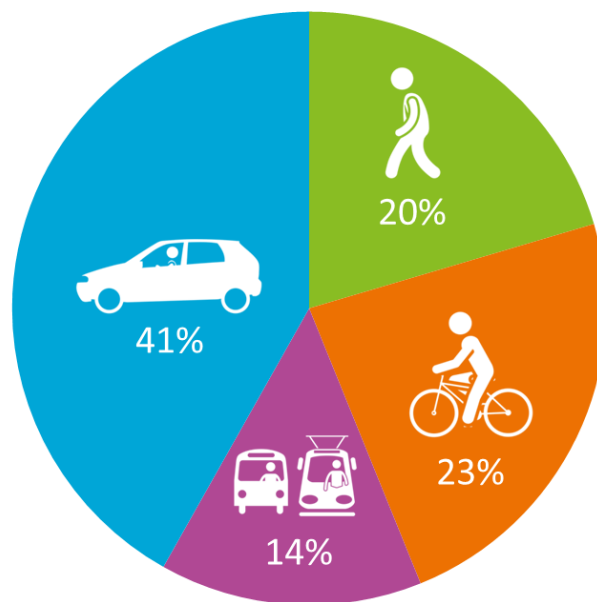
(2007=index 100)



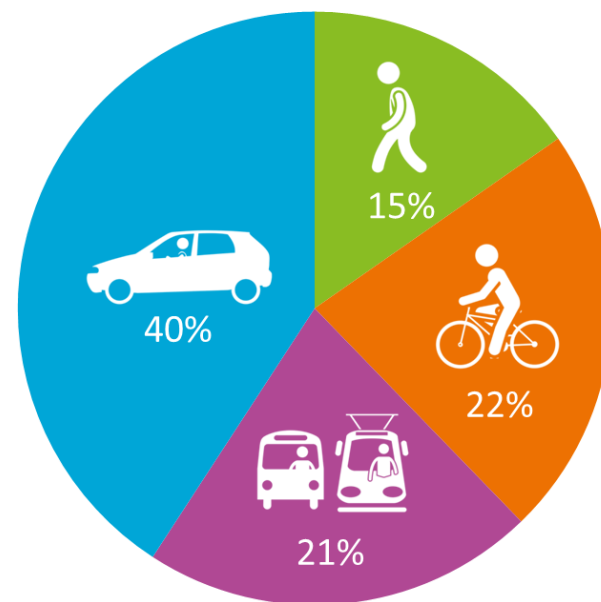
**2003**



**2008**



**2013**

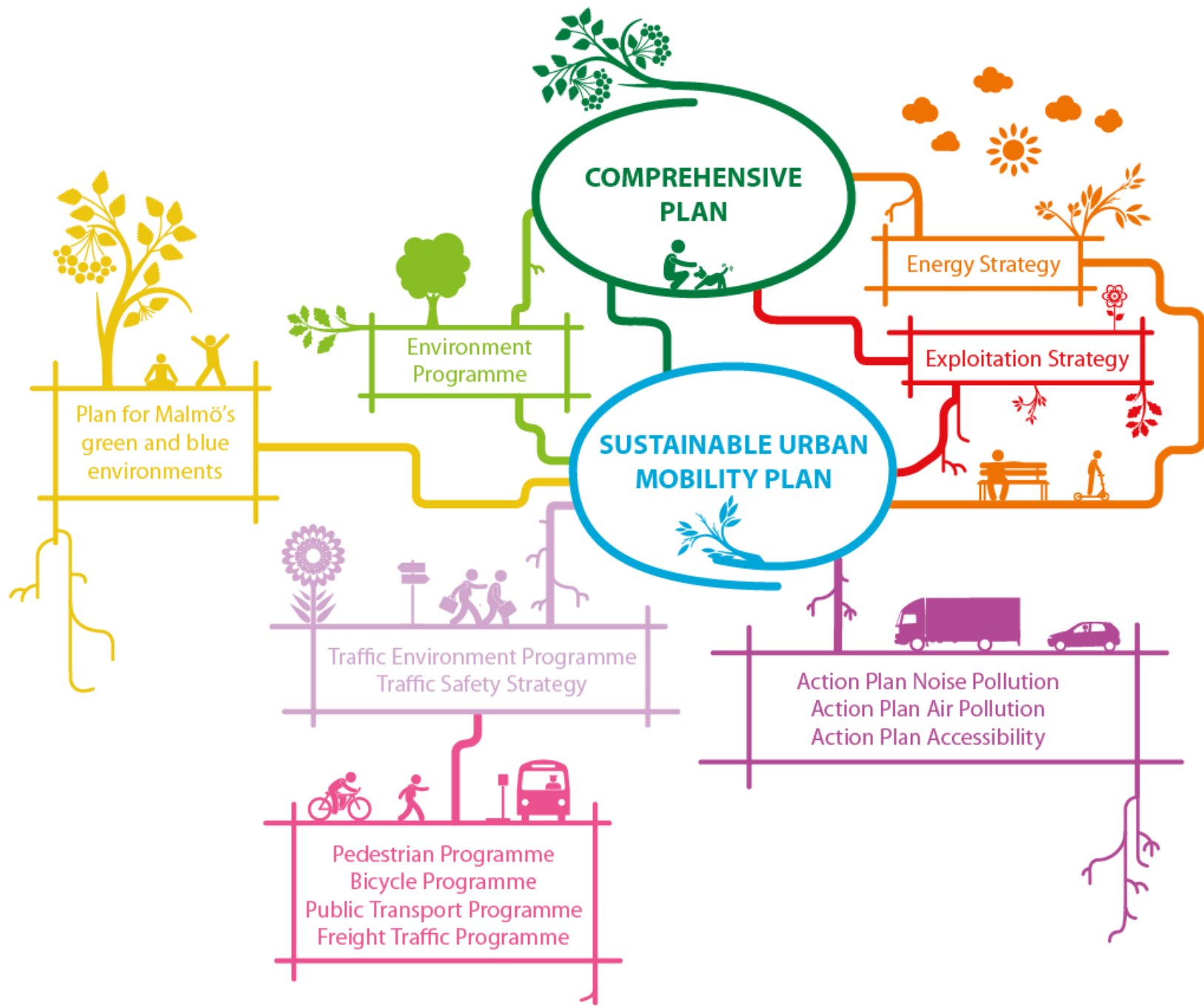






# Background

- Urbanisation – growing region and city, 328 000 pop.
- 2012 city land use plan – dense, mixed, green and short distance city – urban development
- External effects
- All aspects of sustainability
- Holistic approach on transport and urban planning

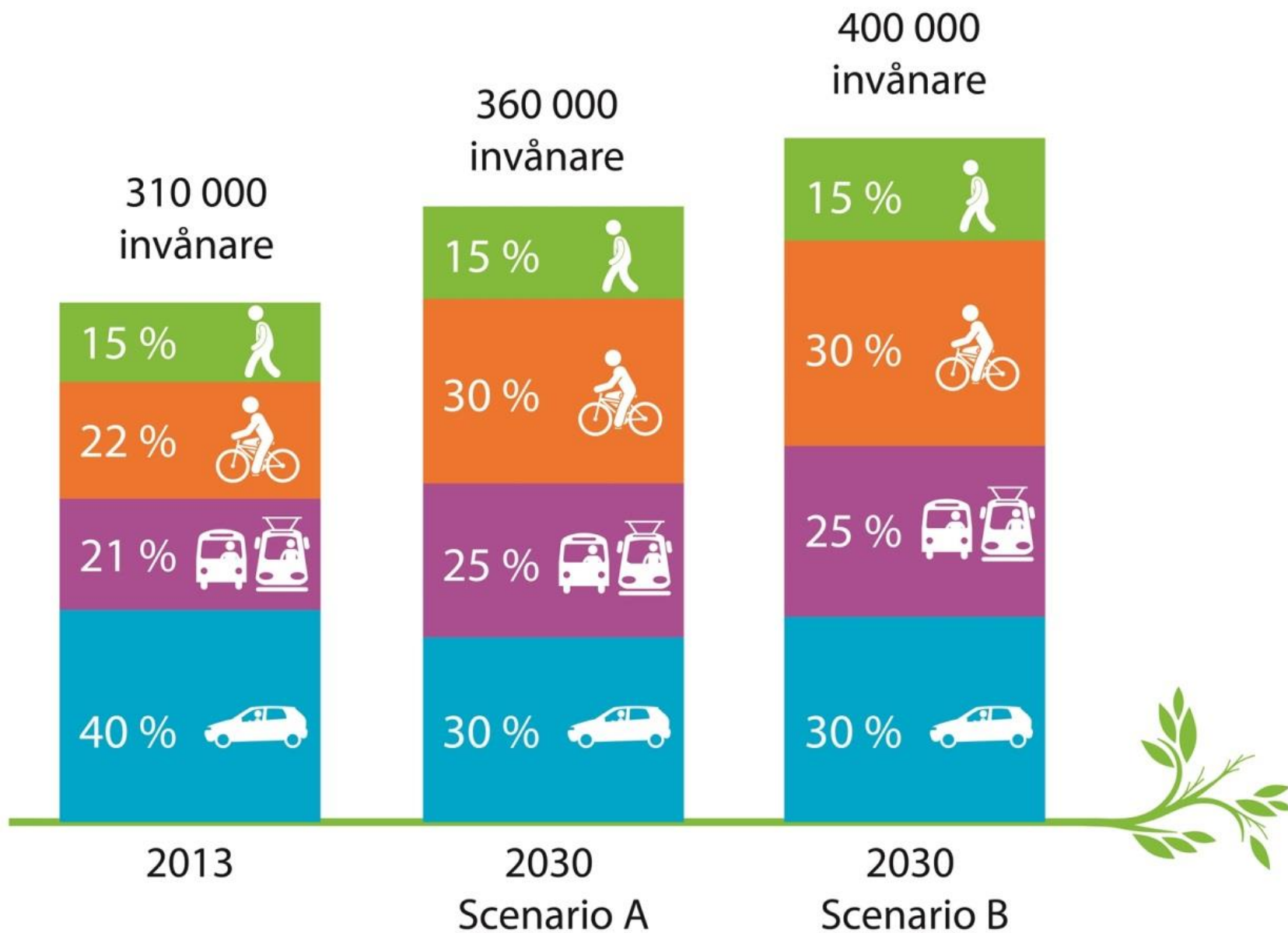




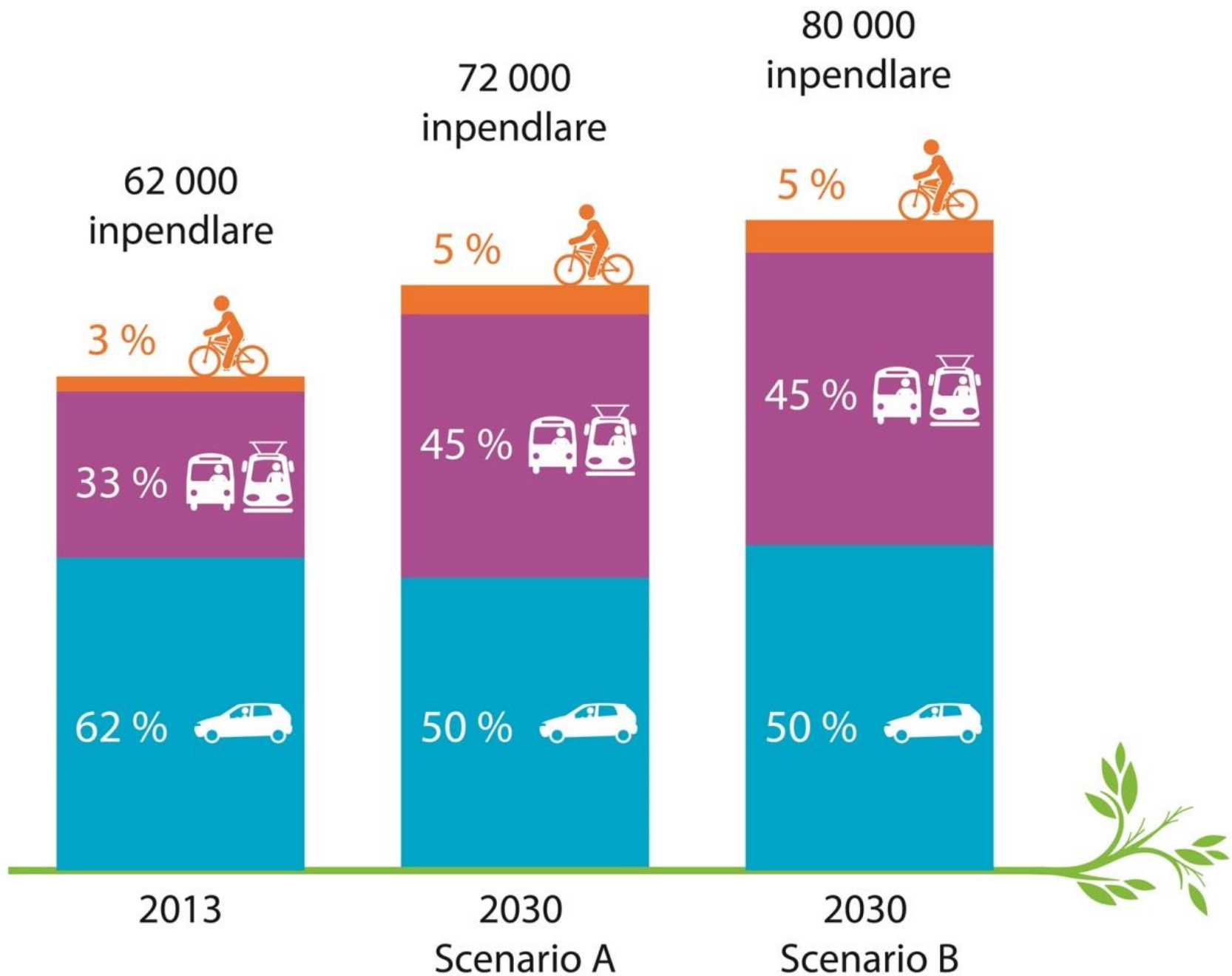
*‘Walking, cycling and public transport are the first choice for all who work, live or visit in Malmö. These travel choices, together with efficient and environmentally friendly freight and car traffic, are the basis of the transport system in our dense and sustainable city - a transport system designed for the city, and for its people.’*















TROTTOAR-SERVERING



GÅENDE



CYKELVÄG



GATUTRÄD



ANGÖRING



BIL



BUSS



SPÅRVAGN



CYKEL-PARKERING



BELYSNING



SITTA



PLANTERING / FASAD-GRÖNSKA



DAG-VATTEN



INFO



HANDEL



MÅLPUNKT/ MÖTESPLATS



ENTRÉER



VÄDER-SKYDD/ HÅLLPLAT



KONST



CITY-LOGISTIK

FÖRGÅRDSMARK

FÖRGÅRDSMARK



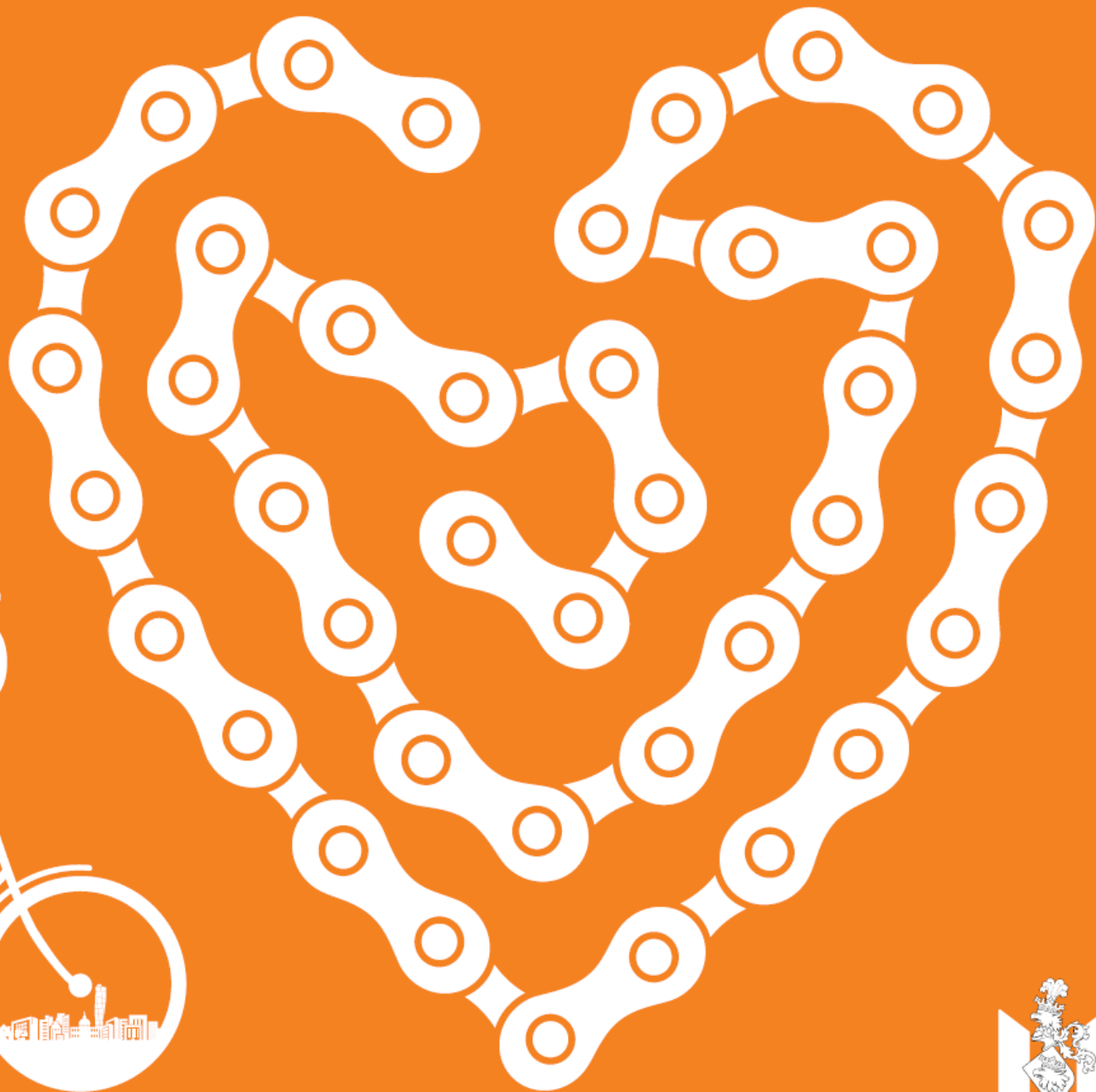




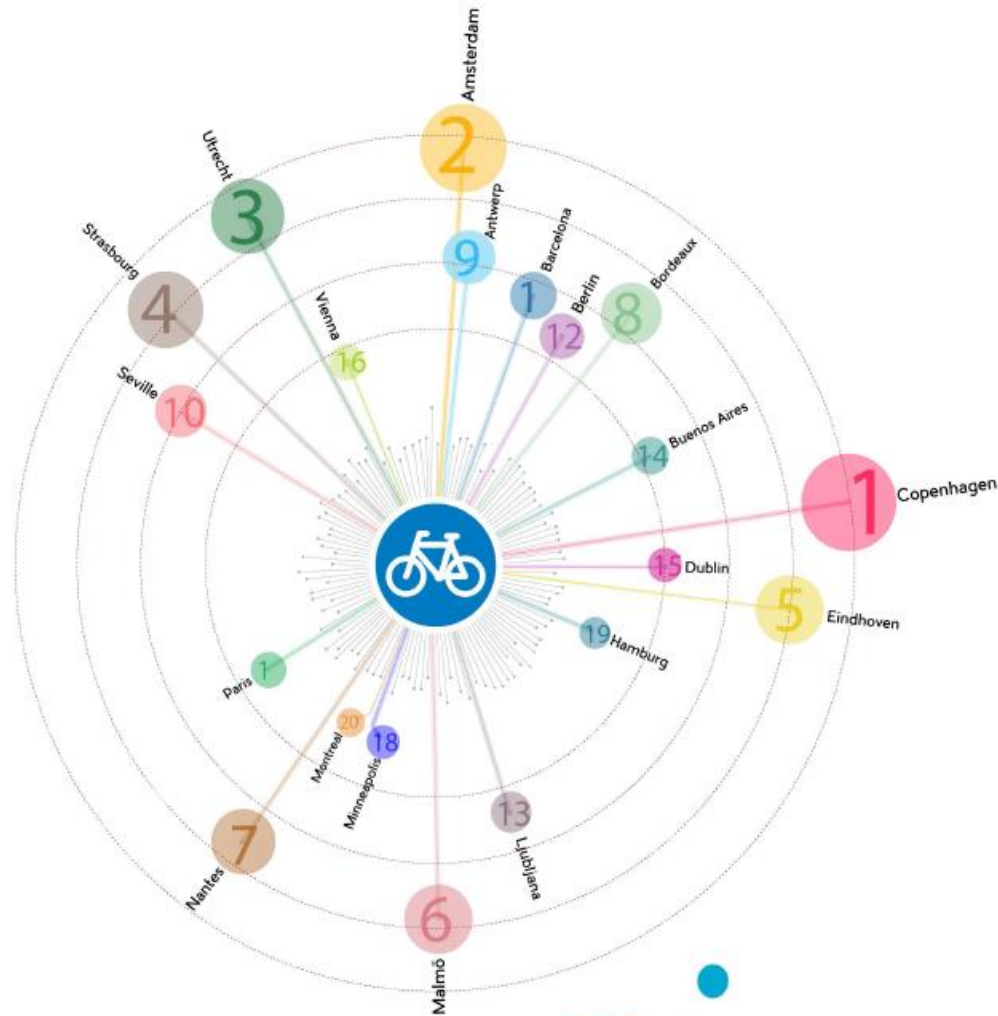




# Malmö







COPENHAGEN  
IZE  
EU

2015  
ci

The 2015  
Copenhagenize Index.  
Bicycle-Friendly Cities.

2015 among the best bicycle cities in the world



Malmö stad

# *40 million euros in 7 years for investing in a mix of both soft and hard measures*

- ♥♥ Strengthen the profile as a cycle city
- ♥♥ Maintenance/operational measures
- ♥♥ Comprehensive infrastructure measures
- ♥♥ Minor infrastructure measures
- ♥♥ Measures for improved parking

## Measures to strengthen the profile as a cycle city

- ♥ Social medias
- ♥ Networks
- ♥ Graphical profile
- ♥ Annual campaigns
- ♥ Apps and maps
- ♥ Bike sharing system







2014

we celebrated cyclists in the morning rush hour.



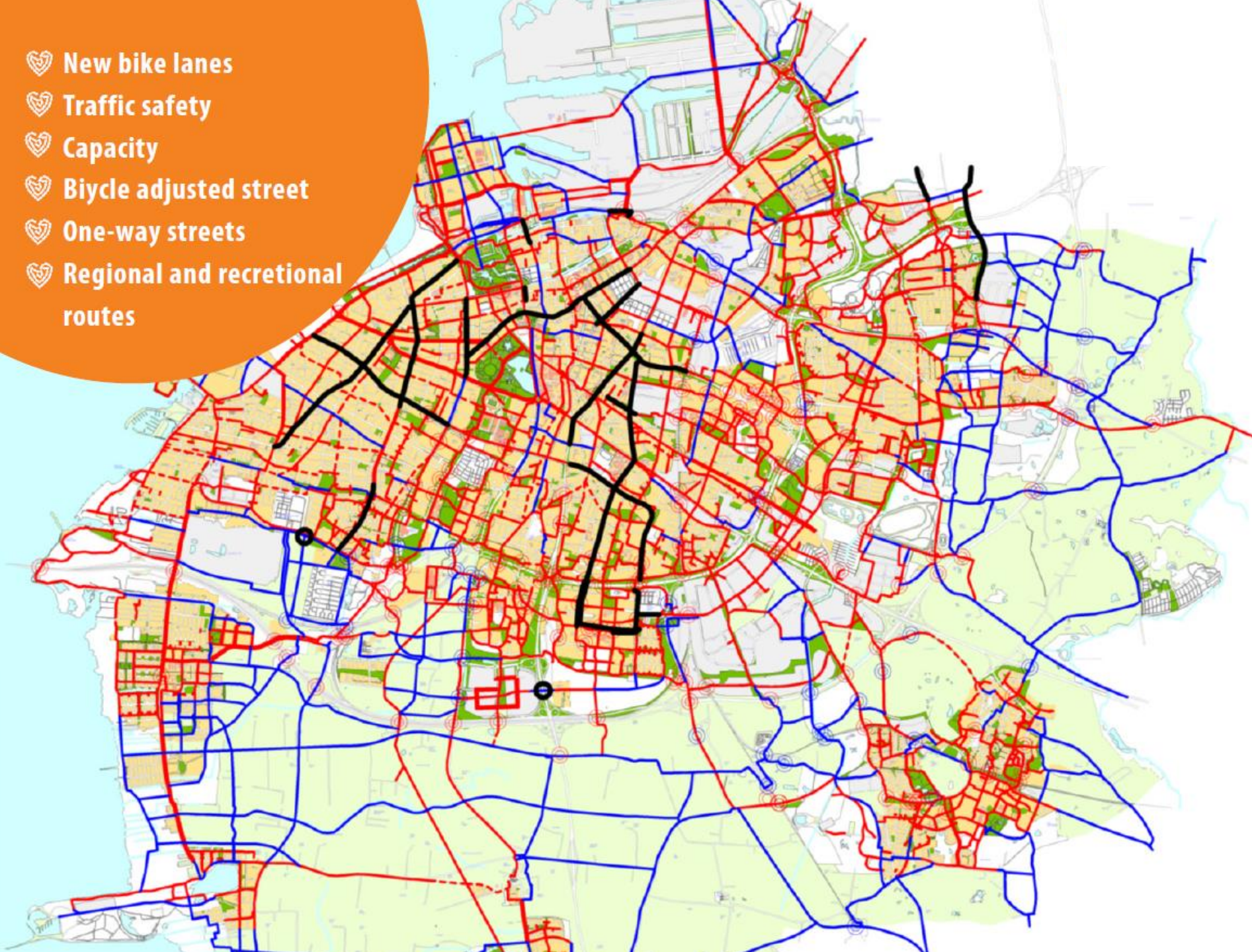


## Operational measures

- ♡ Winter and snow
- ♡ Road work
- ♡ Lighting
- ♡ Surface
- ♡ Removal of obstacles



- ♡ New bike lanes
- ♡ Traffic safety
- ♡ Capacity
- ♡ Bicycle adjusted street
- ♡ One-way streets
- ♡ Regional and recreational routes







## Minor infrastructure measures

- ♡ Air pumps
- ♡ Bars
- ♡ Maps
- ♡ Rest stops
- ♡ Green time
- ♡ Cycle boxes



## Improved parking

- ♥ Hubs
- ♥ Safer parking
- ♥ E-bikes
- ♥ Bike car racks







Toiletter  
Kunnsittställen  
Dusch  
Låstuga



Cykelpump  
Gör-det-självt



Kylor	
Kylor	
1. Kyla	11:15 C
2. Kyla	11:15 C
3. Kyla	11:15 C
4. Kyla	11:15 C
5. Kyla	11:15 C
6. Kyla	11:15 C
7. Kyla	11:15 C
8. Kyla	11:15 C
9. Kyla	11:15 C
10. Kyla	11:15 C
11. Kyla	11:15 C
12. Kyla	11:15 C
13. Kyla	11:15 C
14. Kyla	11:15 C
15. Kyla	11:15 C
16. Kyla	11:15 C
17. Kyla	11:15 C
18. Kyla	11:15 C
19. Kyla	11:15 C
20. Kyla	11:15 C
21. Kyla	11:15 C
22. Kyla	11:15 C
23. Kyla	11:15 C
24. Kyla	11:15 C
25. Kyla	11:15 C
26. Kyla	11:15 C
27. Kyla	11:15 C
28. Kyla	11:15 C
29. Kyla	11:15 C
30. Kyla	11:15 C
31. Kyla	11:15 C
32. Kyla	11:15 C
33. Kyla	11:15 C
34. Kyla	11:15 C
35. Kyla	11:15 C
36. Kyla	11:15 C
37. Kyla	11:15 C
38. Kyla	11:15 C
39. Kyla	11:15 C
40. Kyla	11:15 C
41. Kyla	11:15 C
42. Kyla	11:15 C
43. Kyla	11:15 C
44. Kyla	11:15 C
45. Kyla	11:15 C
46. Kyla	11:15 C
47. Kyla	11:15 C
48. Kyla	11:15 C
49. Kyla	11:15 C
50. Kyla	11:15 C

Kylor	
Kylor	
1. Kyla	11:15 C
2. Kyla	11:15 C
3. Kyla	11:15 C
4. Kyla	11:15 C
5. Kyla	11:15 C
6. Kyla	11:15 C
7. Kyla	11:15 C
8. Kyla	11:15 C
9. Kyla	11:15 C
10. Kyla	11:15 C
11. Kyla	11:15 C
12. Kyla	11:15 C
13. Kyla	11:15 C
14. Kyla	11:15 C
15. Kyla	11:15 C
16. Kyla	11:15 C
17. Kyla	11:15 C
18. Kyla	11:15 C
19. Kyla	11:15 C
20. Kyla	11:15 C
21. Kyla	11:15 C
22. Kyla	11:15 C
23. Kyla	11:15 C
24. Kyla	11:15 C
25. Kyla	11:15 C
26. Kyla	11:15 C
27. Kyla	11:15 C
28. Kyla	11:15 C
29. Kyla	11:15 C
30. Kyla	11:15 C
31. Kyla	11:15 C
32. Kyla	11:15 C
33. Kyla	11:15 C
34. Kyla	11:15 C
35. Kyla	11:15 C
36. Kyla	11:15 C
37. Kyla	11:15 C
38. Kyla	11:15 C
39. Kyla	11:15 C
40. Kyla	11:15 C
41. Kyla	11:15 C
42. Kyla	11:15 C
43. Kyla	11:15 C
44. Kyla	11:15 C
45. Kyla	11:15 C
46. Kyla	11:15 C
47. Kyla	11:15 C
48. Kyla	11:15 C
49. Kyla	11:15 C
50. Kyla	11:15 C

TA HAND OM DIG SJÄLV

WC



VÄLKOMMEN  
MÅN-FRE 7-18  
LÖN-SÖN 8-17









1145 Metaborg	1149 2b
1188 Dalsborg C	3a
1205 Metaborg	1149 2b
1208 Dalsborg C	3a
1209 Dalsborg	1209 2b

5 Videdal	21 min 8
6 Klappham	28 min 8
5 Kvernby	11:10 8 min
33 On	22 min 8

WC



MÅN-FRE 7-18  
LÖR-SÖN 8-17

VÄLKOMMEN  
MÅN-FRE 7-18  
LÖR-SÖN 8-17

TA HAND OM DIG SJÄLV






TA HAND OM DIN CYKEL



VÄLKOMMEN  
MAN-FRE 7-17  
LÖR-SÖN 8-17























Bike&Ride<sup>+</sup>





## How to promote bicycling in Malmö

- ♥♥ It should always be easy to ride a bike
- ♥♥ Treat bicycles as a separate transport mode
- ♥♥ Plan for all kinds of bicycles and bicyclists
- ♥♥ Let bicyclists be visible in traffic
- ♥♥ Traffic safety is important but not the only factor.
- ♥♥ Have ambitious programs with specified objectives, measures and dedicated budgets
- ♥♥ Political support
- ♥♥ In-house acceptance. Everybody has to think bicycle.
- ♥♥ Encourage innovations. Try!
- ♥♥ Annual campaigns.





# The City of Kruševac

Be brave, be the change you want to see in the world

- Set up high goals and long term goals
- Get active in different networks - Learn from other success stories & mistakes
- Educate your citizens and politicians
- Start testbeds and workshop with politicians & Citizens – Reclaim the streets in a good way
- Work with the speed limits
- Implement quiet zones
- Create micro parks – 1 or 2 parking places
- Remove parking places - Build simple bike lanes
- Implement green areas within the city – green roofs, green walls etc.

