

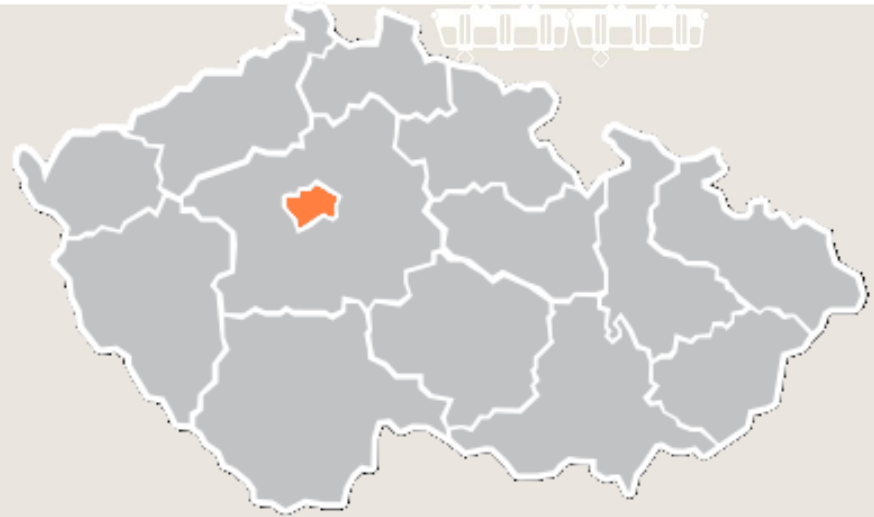
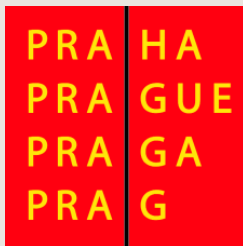
Prague Public Transit Company



www.dpp.cz



Dopravní podnik
hlavního města Prahy



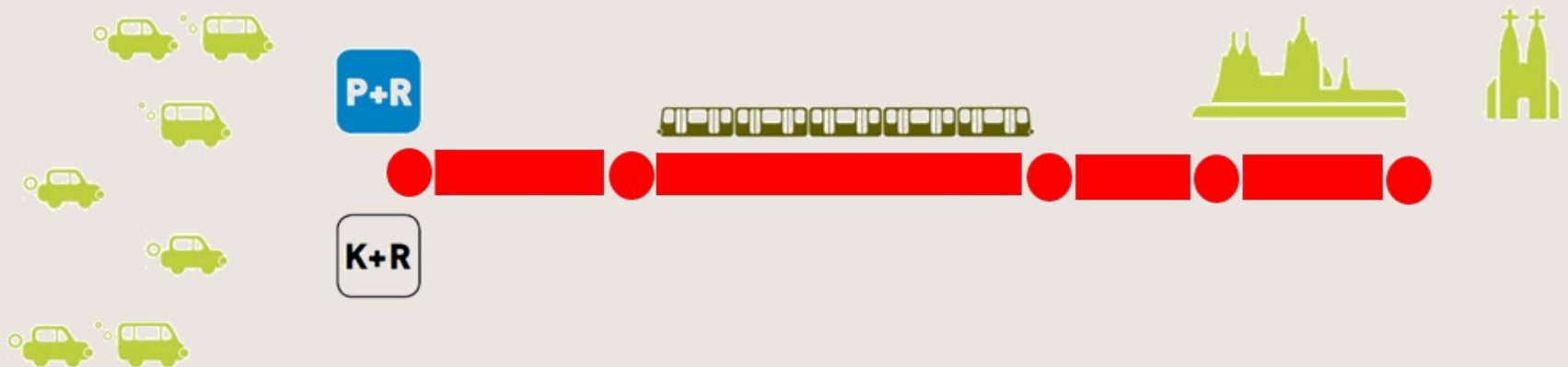
Area 496 km²
Population 1,35 million

Modal split before pandemic 59% / 42 % public transport
before pandemic 41% / 58 % individual car transport
Cars 870 cars per 1.000 inhabitants



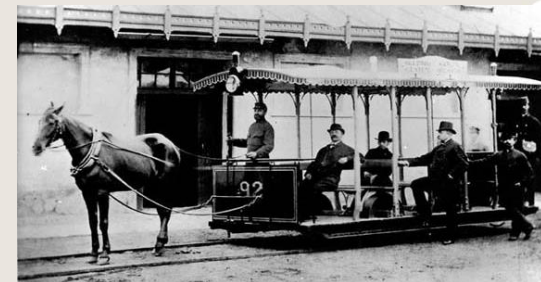
Public Transport Strategy in Prague

- public transport as a first choice when traveling through the city
- less cars in the city the better
- P+R system for commuters (both in suburbs and outside the city)
- city parking policy
- (Road User Charging in a city centre – Low Emission Zone?)



History of public transport in Prague

- 1829 First public transport service (two omnibus lines)
- 1875 First horse tram service**
- 1891 Funicular on Petřín Hill
- 1891 *First electric tram service***
- 1908 First bus service
- 1936 First trolleybus service (trolleybus service ended in 1972)
- 1946 Electrical Utilities of the King's City of Prague were established
- 1974 First metro line in operation
- 1991 Prague Public Transit Co., Inc.
- 1992 Prague Integrated Transport System
- 1996 Transferable fares in public transport
- 2029? First driverless metro?



www.dpp.cz



Dopravní podnik
hlavního města Prahy

Prague Integrated Transport System

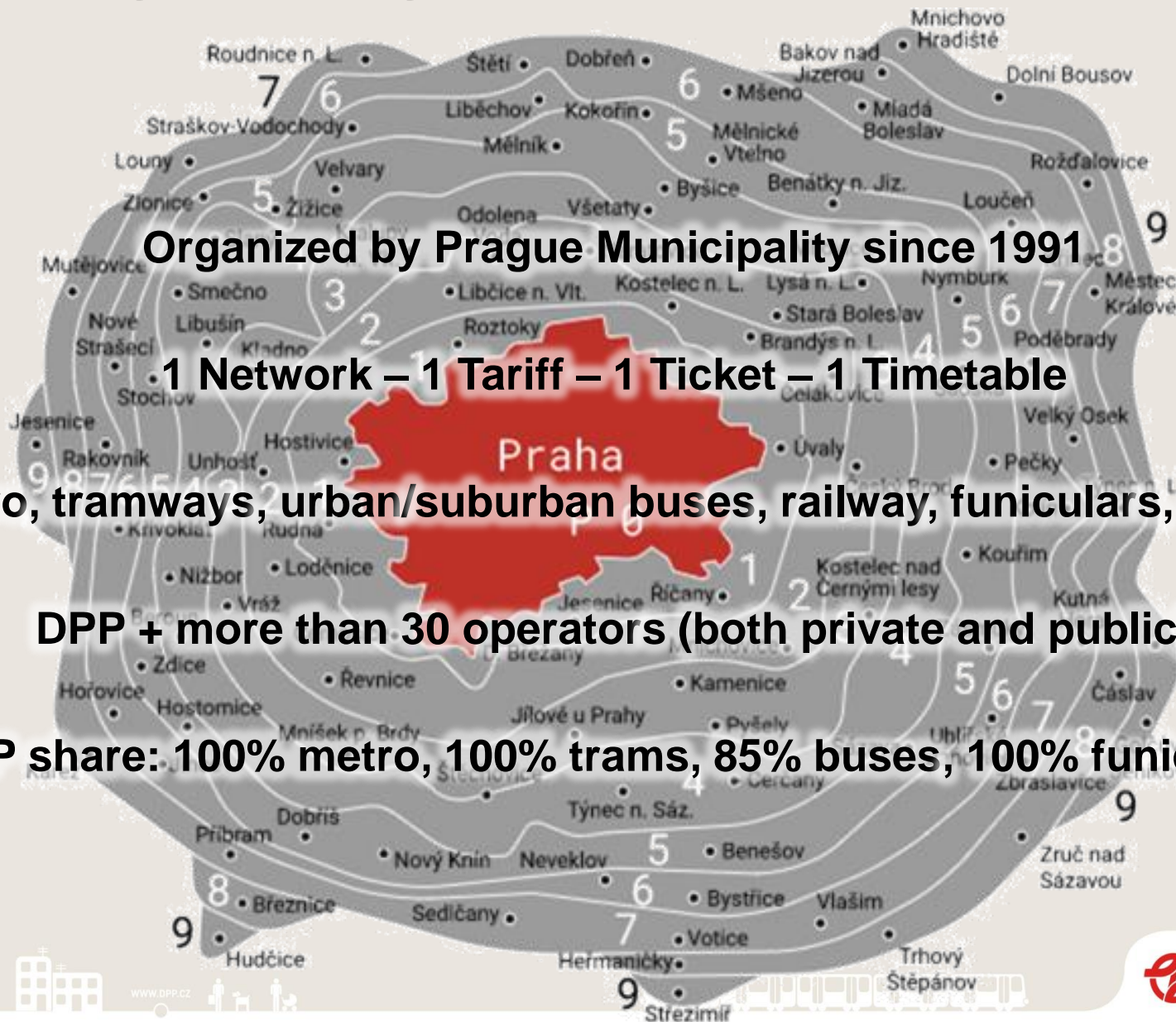
Organized by Prague Municipality since 1991

1 Network – 1 Tariff – 1 Ticket – 1 Timetable

Metro, tramways, urban/suburban buses, railway, funiculars, ferries

DPP + more than 30 operators (both private and public)

DPP share: 100% metro, 100% trams, 85% buses, 100% funiculars



Prague Public Transit Co., Inc.

Dopravní podnik hl. m. Prahy, a.s. / DPP

- Largest public transport operator in the Czech Republic
- Joint stock company 100% owned by the City of Prague
- Number of employees ~11.000
- Average salary monthly ~45.500 CZK (~€ 1.850)

- 730 vehicles in metro (146 trains of 5 wagons)
- 783 tram cars (51 % low floor, 47 % articulated)
- 1.165 buses (99 % low floor, 43 % articulated)

- Basic ticket (90 minutes) 40 CZK (€ 1,60)
- Annual ticket for adults 3.650 CZK (€ 150)
- 1,23 billion passengers annually before pandemic
- 648 million passengers in 2021 (45 % less)



Public Transport in Prague

- Metro**
- first metro line (9 km section of **C** line) was opened in 1974
 - today 3 lines with 66 km and 61 stations, 3 depots
 - average age of the fleet – 14 years
 - 48% passengers using public transport, in operation daily 4:30 – 0:30

- Trams**
- first tram line was opened in 1891
 - today 24 day / 9 night lines, 7 depots
 - average age of the fleet – 12 years
 - 28% passengers using public transport, in operation 24/7

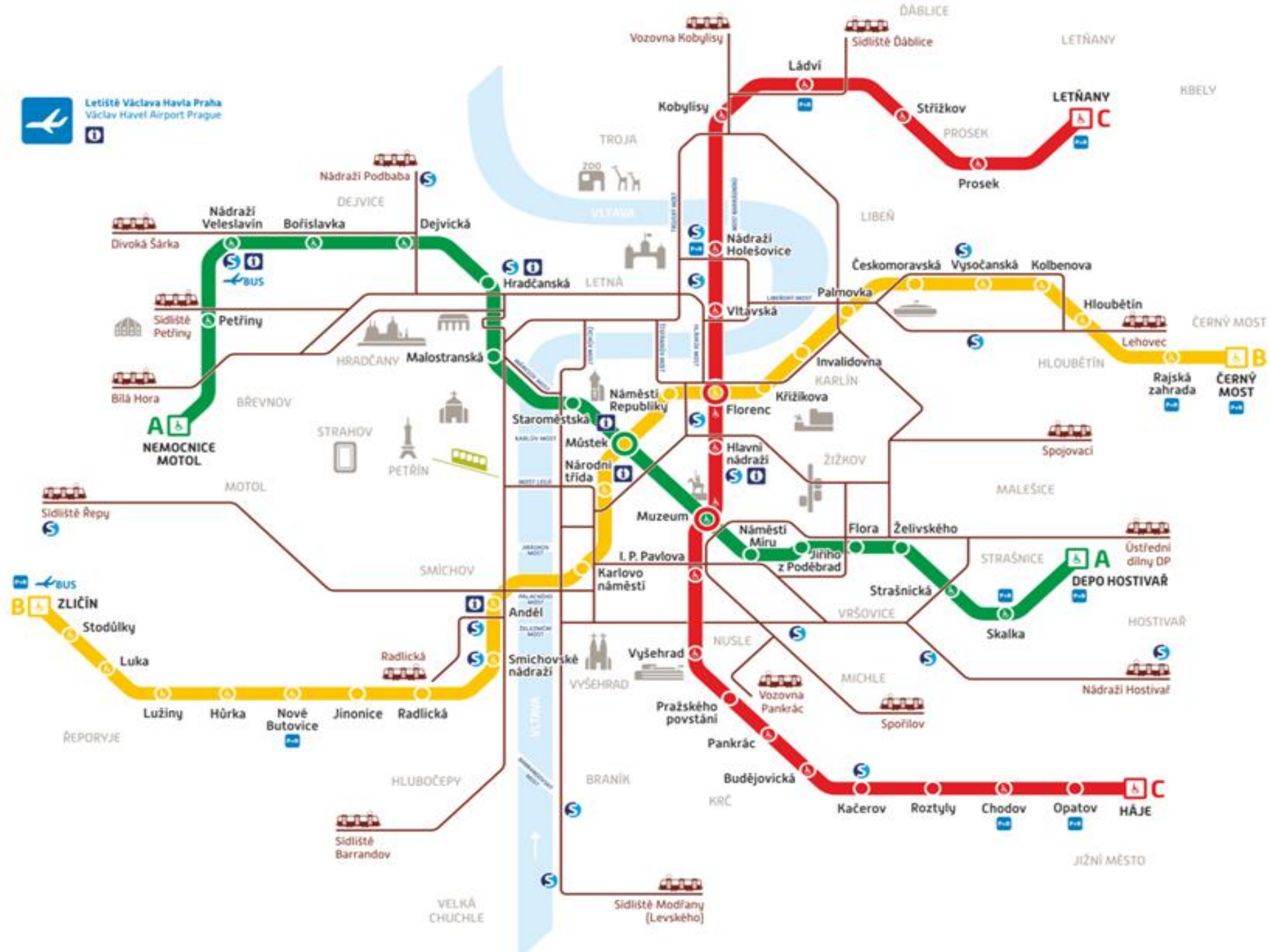
- Buses**
- first bus line was opened in 1908
 - today 124 day / 15 night lines, 5 garages
 - average age of the fleet – 6 years
 - 24% passengers using public transport, in operation 24/7

Funicular + Ferries

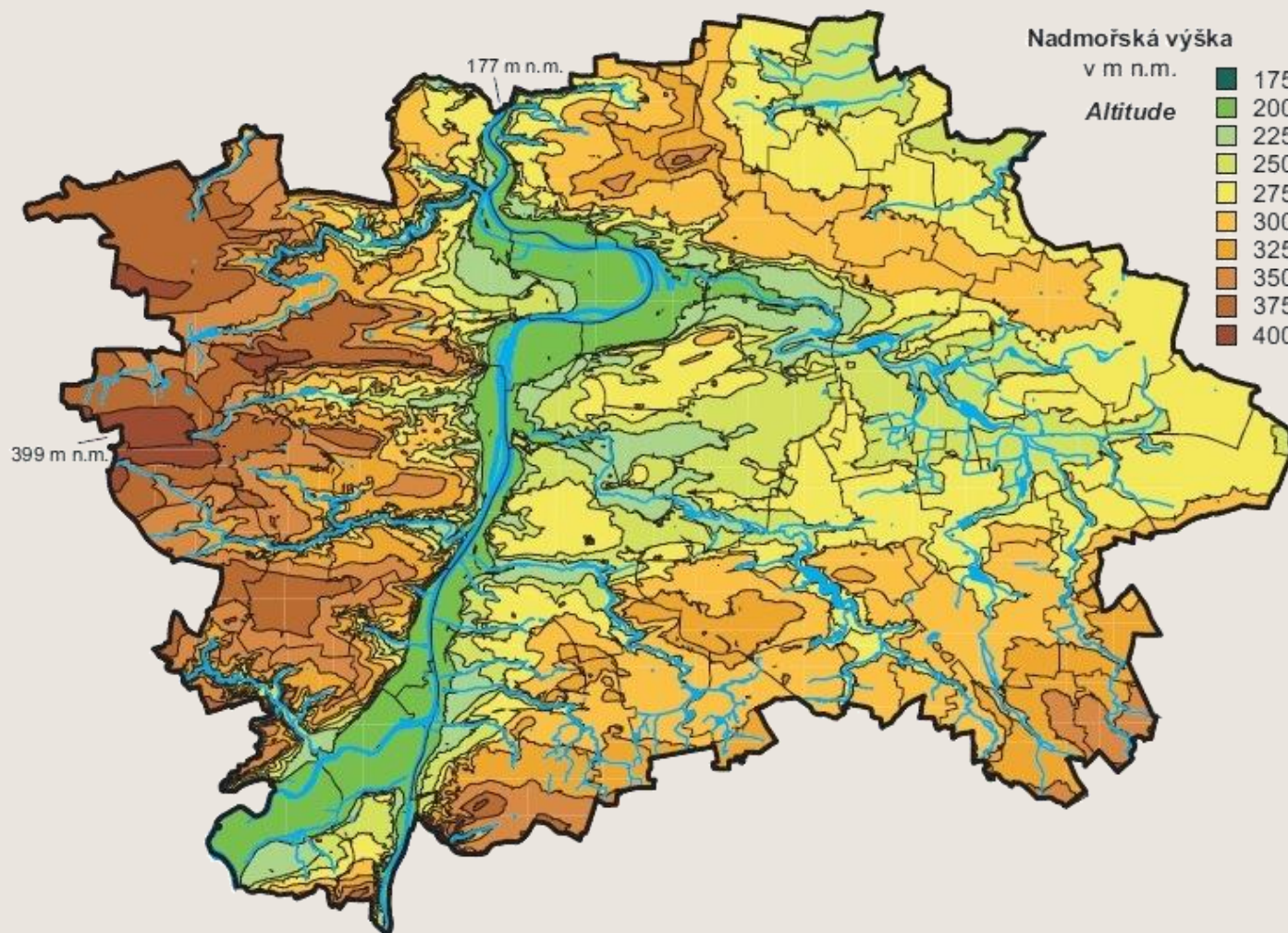




Letiště Václava Havla Praha
Václav Havel Airport Prague



Prague geomorphology



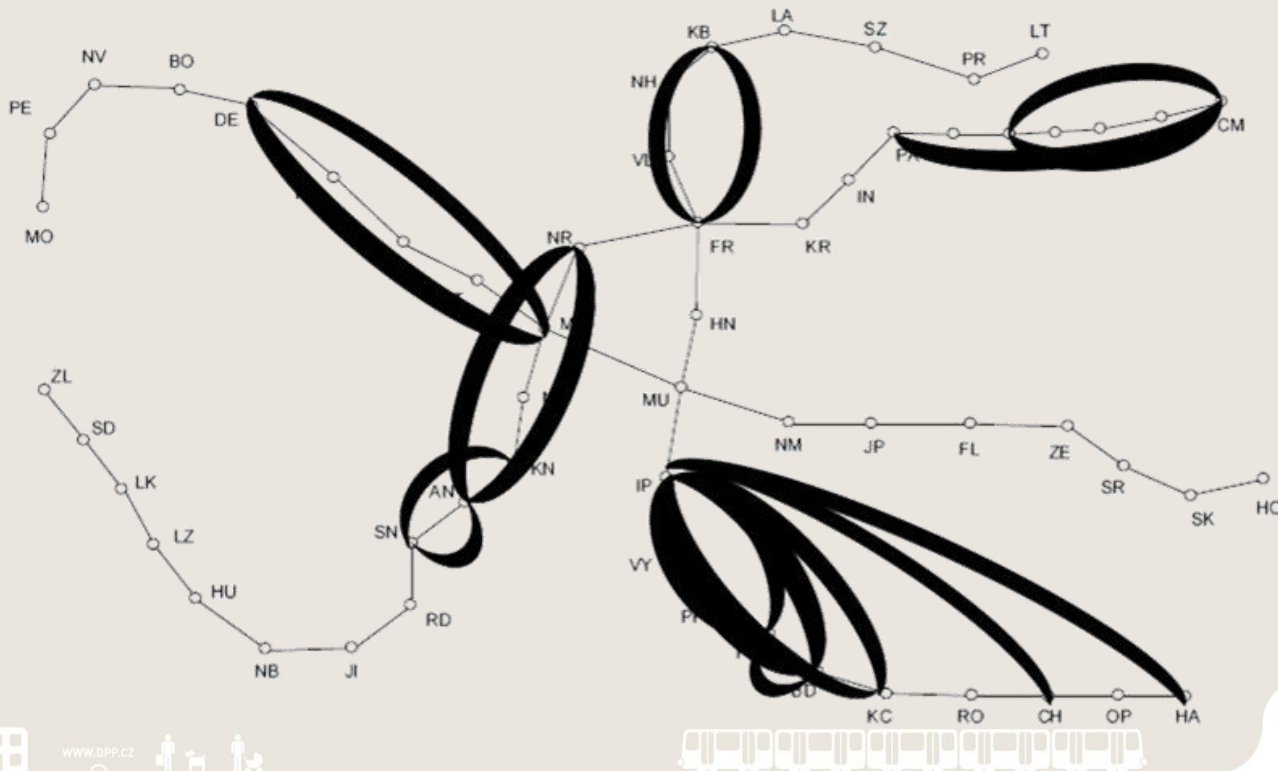
www.dpp.cz



Dopravní podnik
hlavního města Prahy

Metro importance for Prague

- The youngest, today's backbone public transport system
- Three-line radial system with the largest passenger flows
- Metro trains with capacity of 1.200 passengers (every 105 seconds on line **C**)
- Potential for metro development in southern sector of Prague => metro **D** line project



Metro D Line project

Driverless metro project

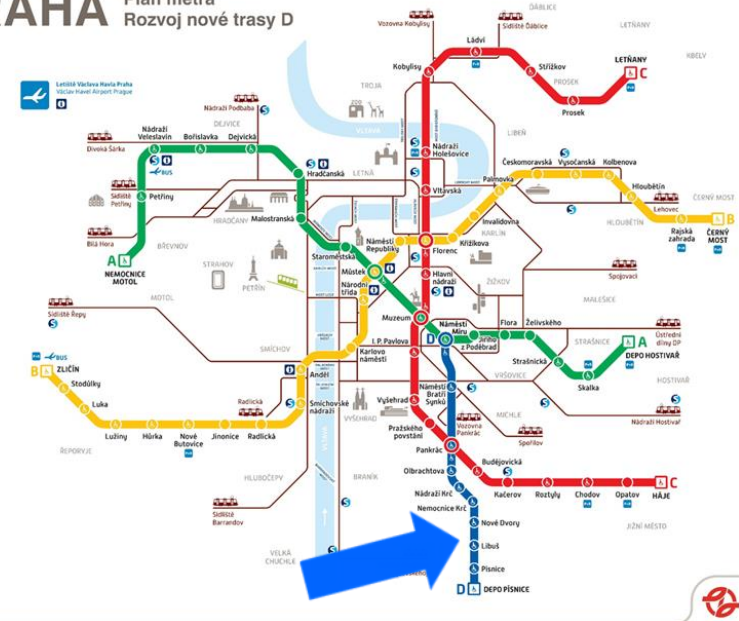
10,6 km and 10 stations

Start of construction: 21 April 2022

Start of operation: 2028



PRAHA Plán metra Rozvoj nové trasy D



Metro network after 2028



Barrier-free accessible metro stations



Metro as a city-forming element



Metro as a city-forming element



www.dpp.cz



Trams as a city-forming element



www.dpp.cz



Tram network in Prague

With the length of the network, Prague ranks among TOP 20 tram networks.
With number of passengers, Prague belongs to the largest tram systems.

Specific of the Prague tram network is the high flexibility of the system:

- 3 four-junction junctions with the possibility of driving in all directions
- Preferential arrangements when passing through intersections
- Varied and extensive fleet
- 147 km of infrastructure
- 939 switches



Tram rolling stock

T3M

(24 cars)



T3SU

(17 cars)



T3R.P

(347 cars)



T3R.PLF

(35 cars)



T6A5

(2 cars)



KT8D5.RN2P

(53 trains)



14T

(55 trains)



15T

(250 trains)



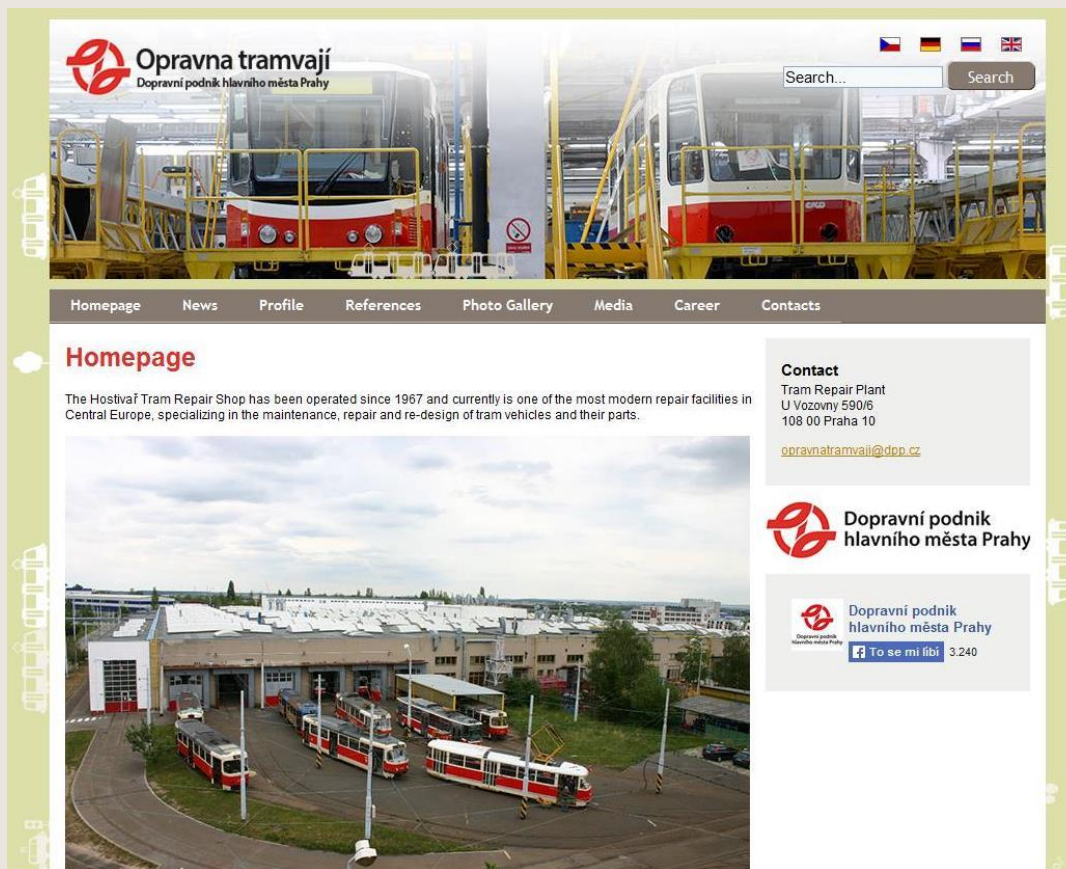
www.dpp.cz



Dopravní podnik
hlavního města Prahy

Hostivař Tram Repair Shop

www.opravnatramvaji.cz



www.dpp.cz



Dopravní podnik
hlavního města Prahy

2021/2022: Tram boom



Need for new trams by 2030

Vehicle requested:

Uni-directional vehicle

Low-floor vehicle

Length 32 m

Air conditioning in all parts (both, driver and passengers)

Articulated bogies

All driving bogies

All doors on the right hand side in the direction of travel

No hydraulic brakes (electrodynamic or mechanical)



Electrification of Prague bus transport

Number of DPP buses – 1.165 in total

Strategic projects in the electrification of Prague bus transport agenda:

- Electric buses (static charging at terminus stop)
- Partial trolleybus (static and in-motion charging)



www.dpp.cz



Dopravní podnik
hlavního města Prahy

2022/2023: Bus electrification boom



www.dpp.cz



Škoda E'CITY 36BB

Producer: Škoda Electric Company

Standard length 12 metres

100% low-floor battery electric bus of the M3/I category

Full-vehicle air conditioning

Capacity: 69 passengers

Engine power: 160 kW

Fast charging power: up to 150 kW



www.dpp.cz



Dopravní podnik
hlavního města Prahy

Škoda E'CITY 36BB in DPP

Number of vehicles: 14

First delivery: December 2021

Last delivery: February 2022

Value of contract: 207 mio CZK (€ 8,4 mio)

Financing: 85 % EU, 15 % DPP

Impact annually: 252.000 litres of diesel less, 714 tonnes of CO₂ less



Škoda E'CITY 36BB in DPP

Fast charging using a two-pole pantograph

Pantograph is equipped with a camera to check correct position and function

1. In Vršovice bus depot **during night** trolleybus trolley 600 V DC / 750 V DC
2. At Strašnická and Želivského terminal stops shortly **in operation (15 – 30 mins)**

Charging infrastructure is connected to tram infrastructure, using recuperation



www.dpp.cz



Dopravní podnik
hlavního města Prahy

Thank you

Jiri DOSLY

Head of International and Corporate Affairs

Prague Public Transit Co., Inc.

www.dpp.cz/en/



www.dpp.cz



Dopravní podnik
hlavního města Prahy