

IPR Prague

Judita Eisenberger

*Urban Planner and
International Relations Specialist*

APRIL 11, 2022



IPR
PRAHA



IPR Prague

01 OUR CITY

02 OUR PLANNING HISTORY

03 OUR MANDATE

04 OUR WORK



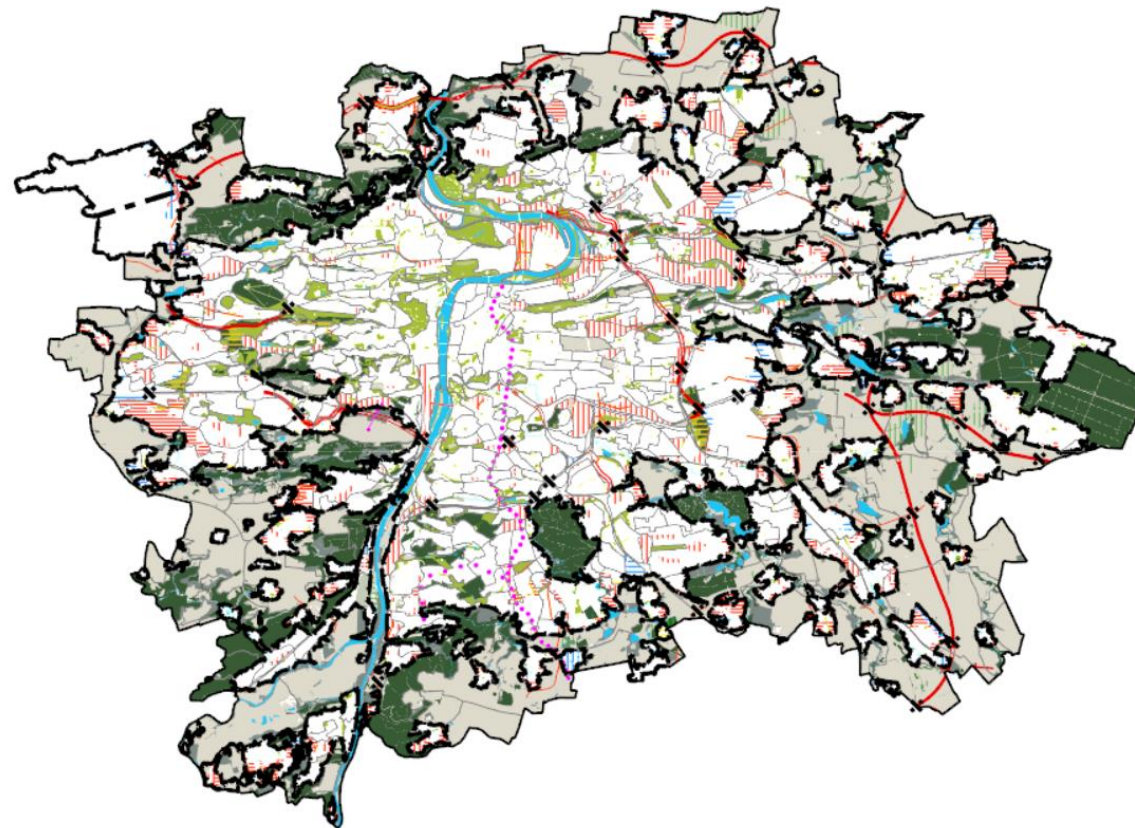
IPR —
PRAHA

01

OUR CITY

Prague in Numbers

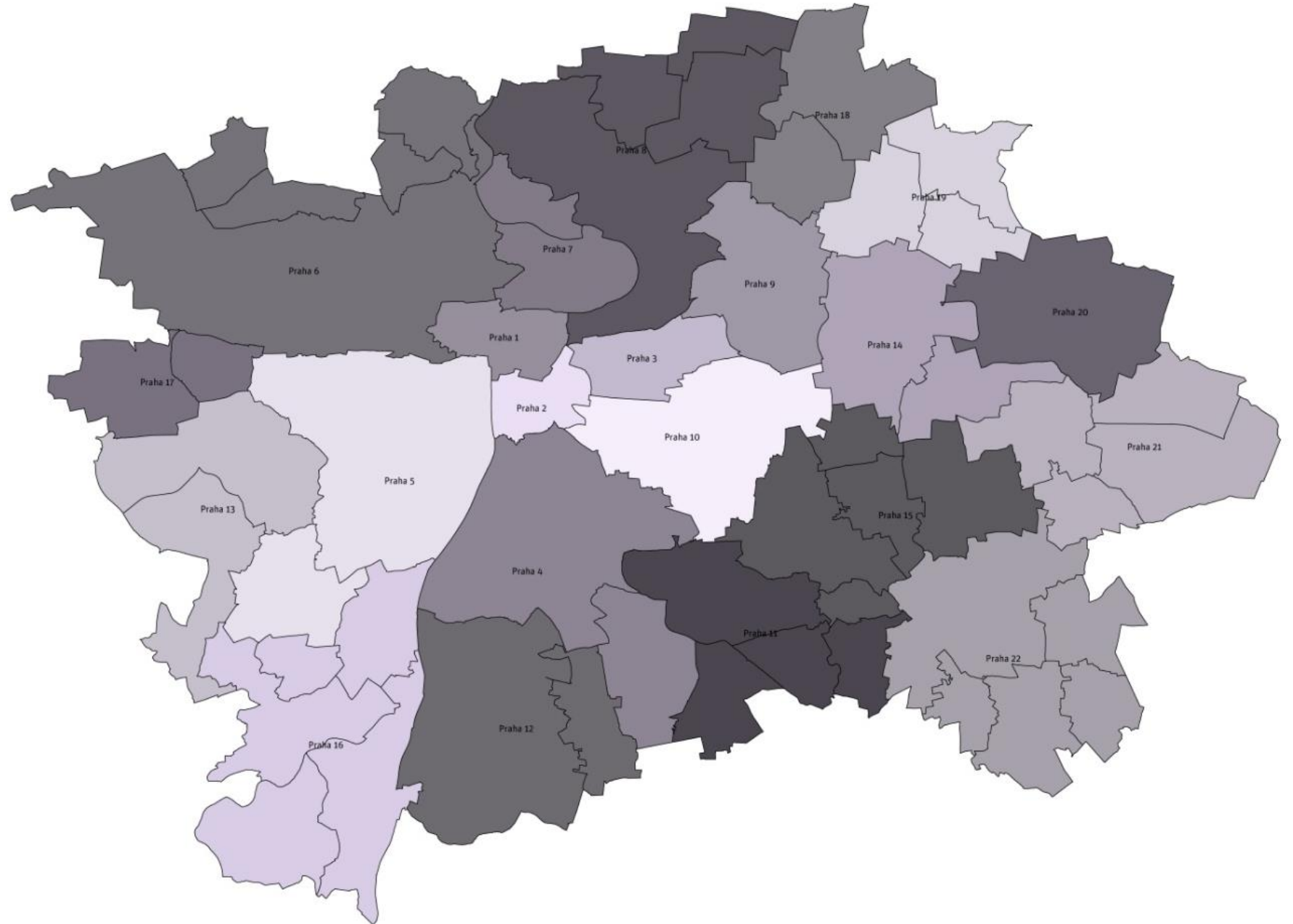
- Area: 496 km²
- Population: 1 335 084 (2021)
- Boroughs: 57
- Density: 2,691 people/km²
- Tourism: 7.9 million visitors in 2018
2.1 million visitors in 2020
2.4 million visitors in 2021



Prague's 57 Boroughs



Prague's 22 Administrative Districts

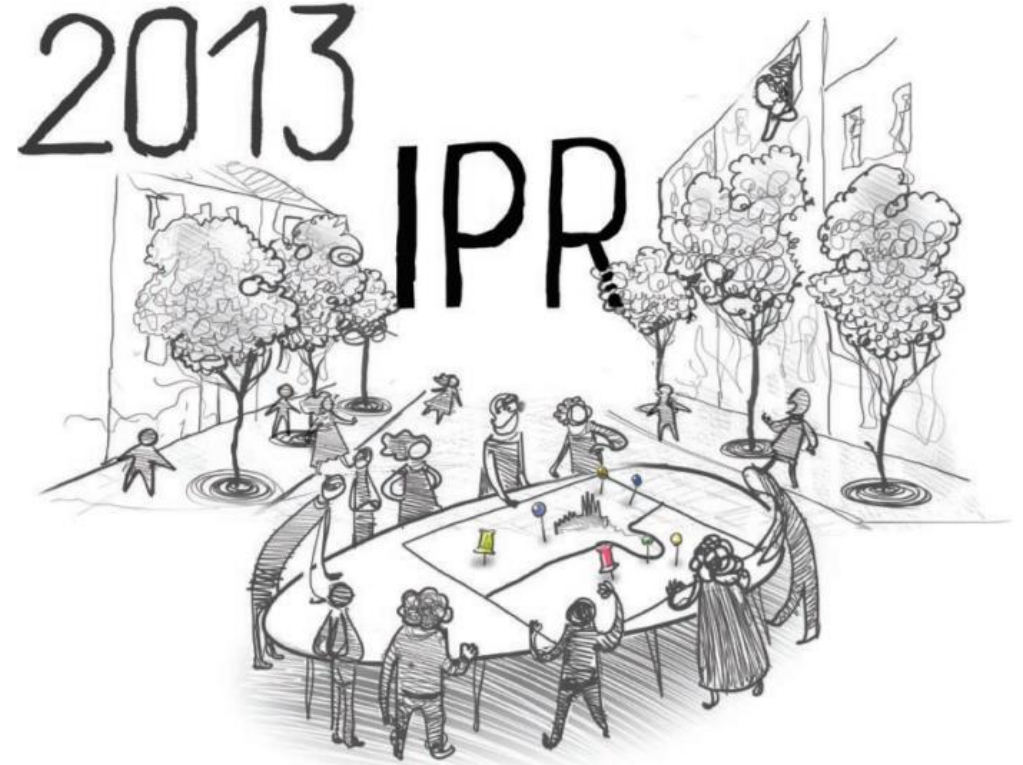


02

OUR PLANNING HISTORY

Our recent planning history

- 1945 Planning Commission for the Capital City of Prague
- 1951 Prague City Development Plan Office
- 1961 Office of the Chief Architect of Prague
- 1994 City Development Authority of Prague
- 2013 The Prague Institute of Planning and Development



03

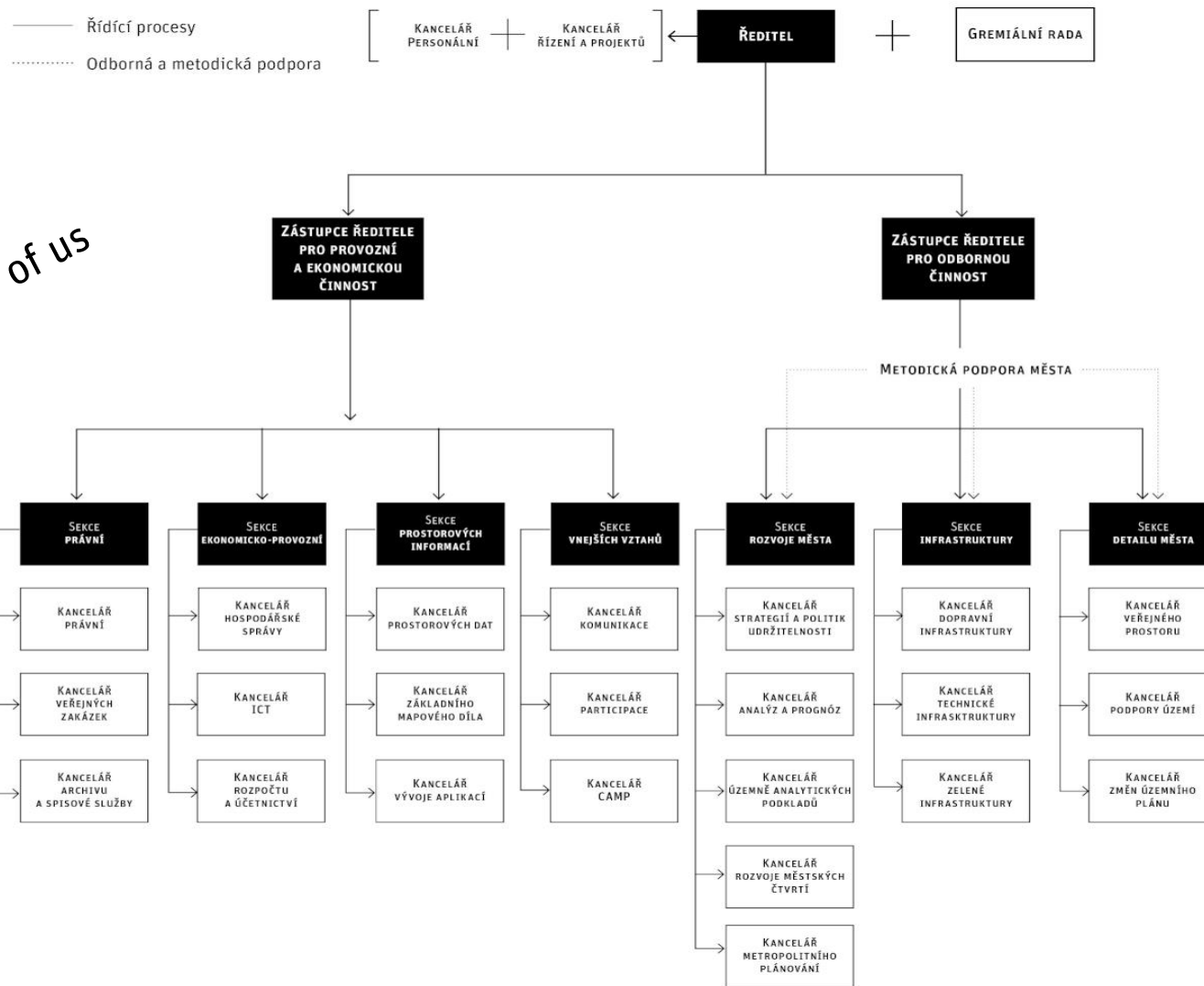
OUR MANDATE

Our Mandate

- The Prague Institute of Planning and Development is the **body in charge of developing the concept behind the city's architecture, urbanism, development and formation**. It is an organization funded by the City of Prague and represents the city in spatial planning matters.
- We have a single basic objective – **to make Prague a living, influential, dynamic and competitive city** that provides pleasant conditions for living, flexibly reacts to the current needs of its population, and maintains its place among the most advanced cities in Europe.

Organigram IPR Praha 2021

There are about 250 of us

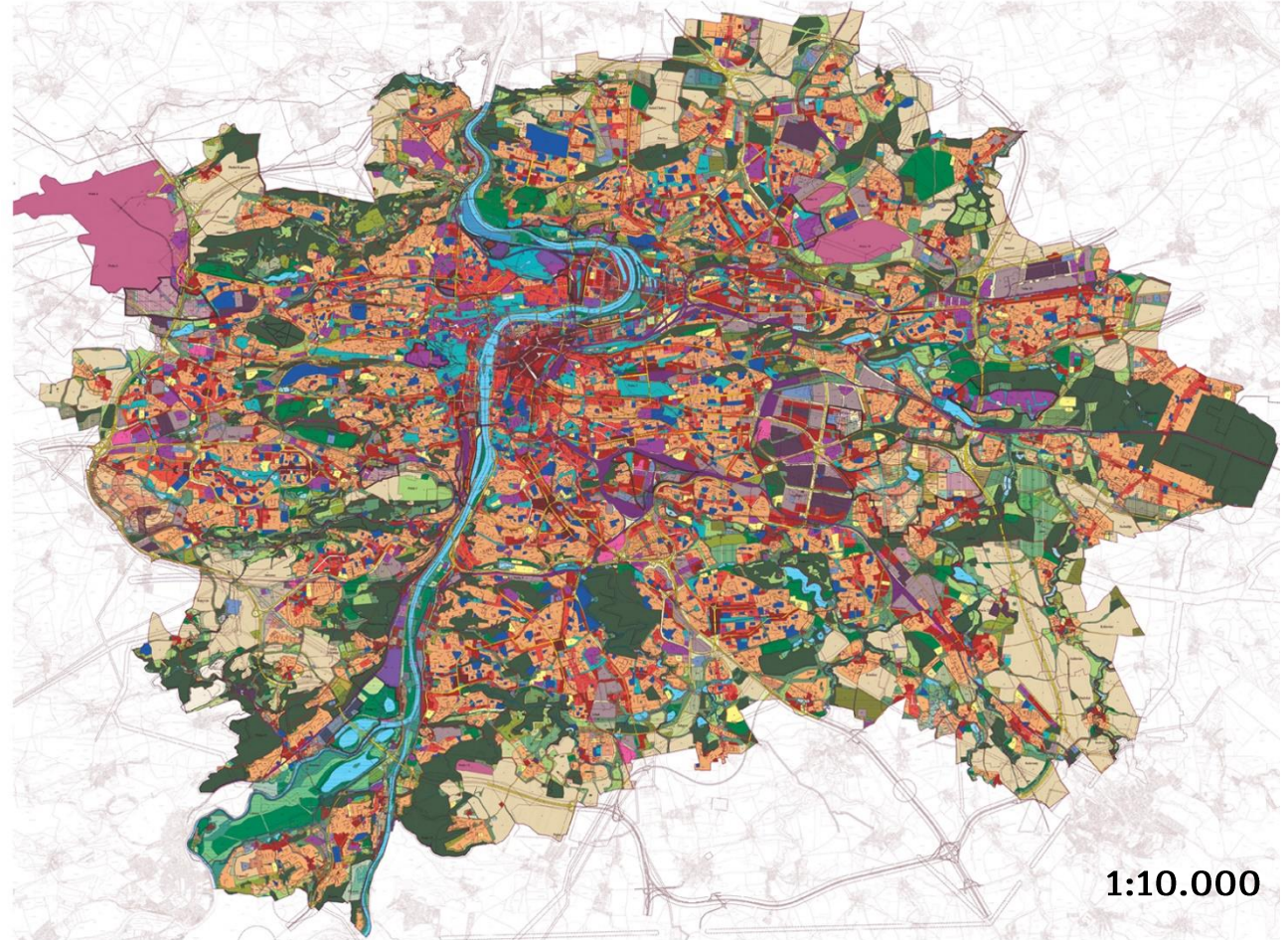


04

OUR WORK

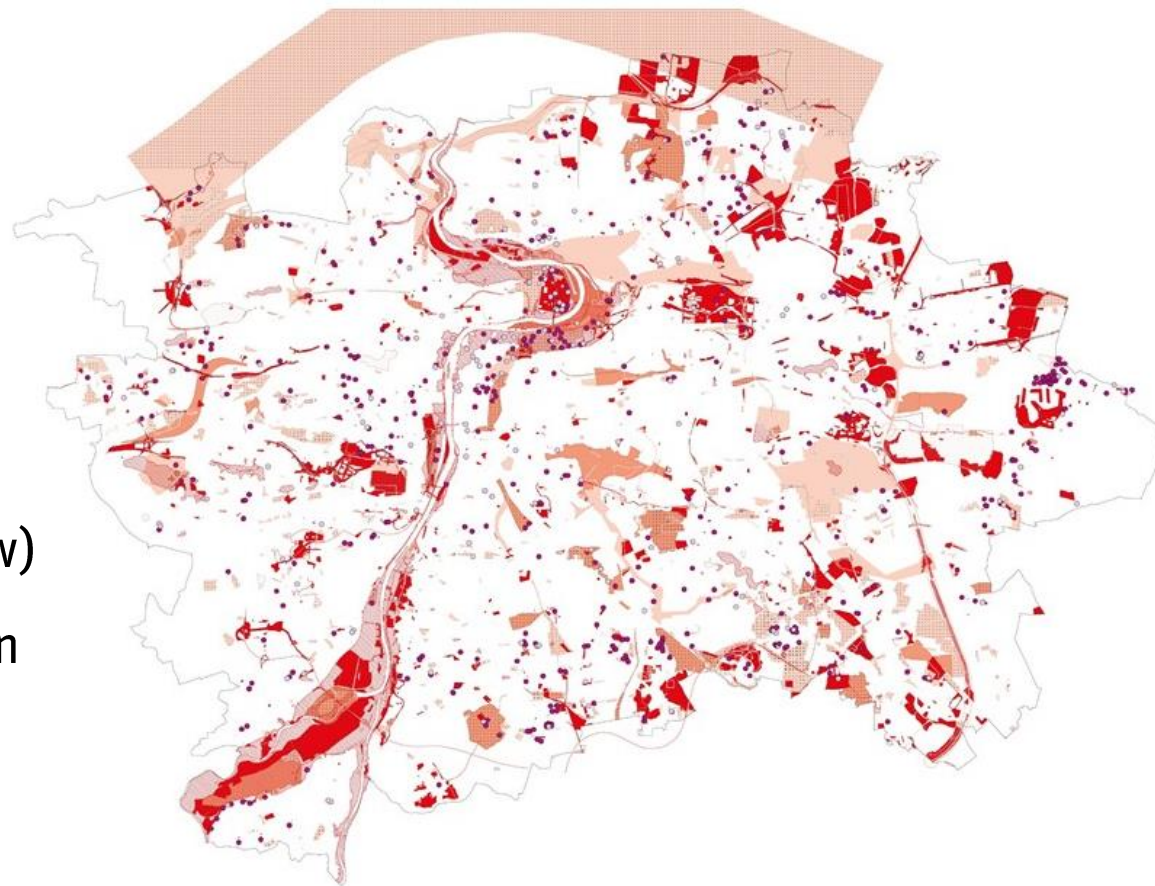
Current Land Use Plan for Prague

- This plan was approved in 1999 and is still in use today.
- The plan dictates allowable uses by parcel.



Changes to the Land Use Plan

- Amendments to the 1999 plan were constantly being requested and processed by IPR.
- Between 2000 and 2012, 2 060 changes were processed.
- This (and a statute in the country's planning law) necessitated the creation of a new land use plan for the city.

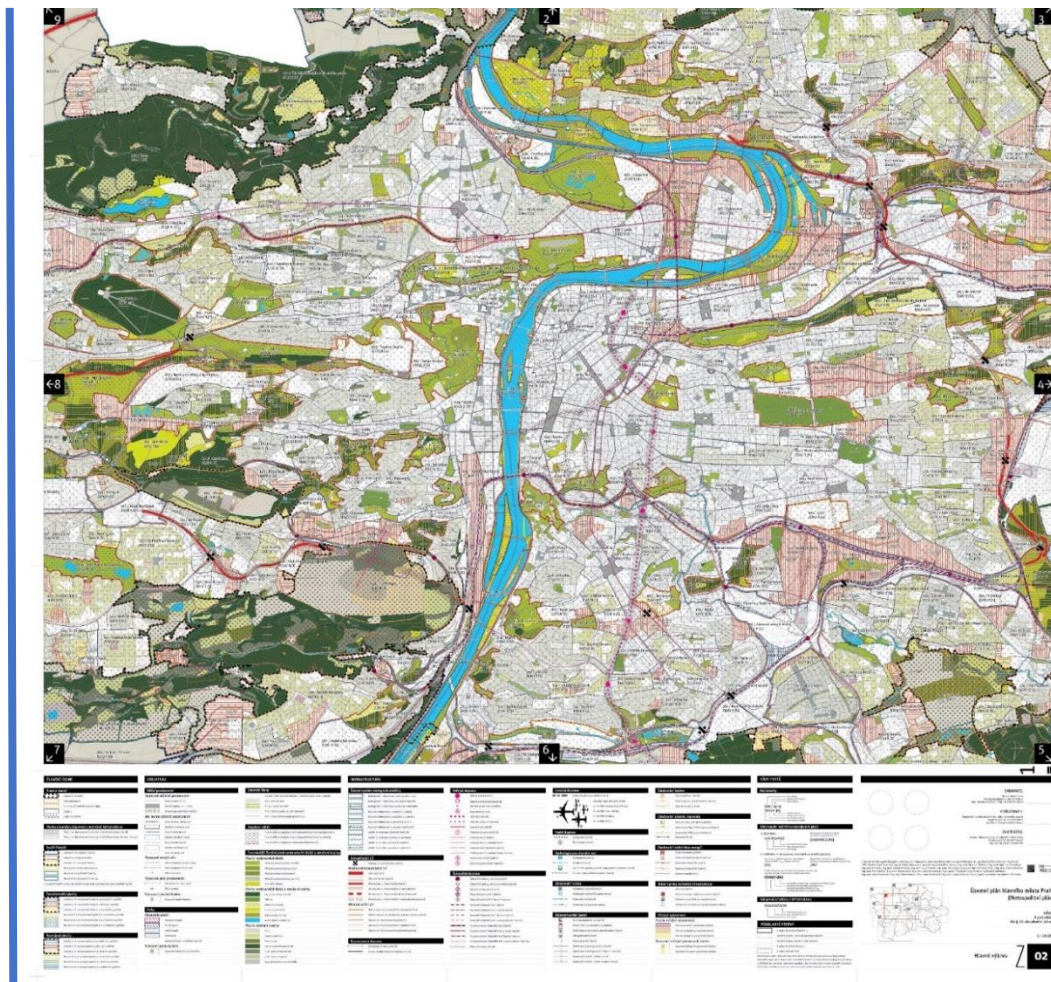
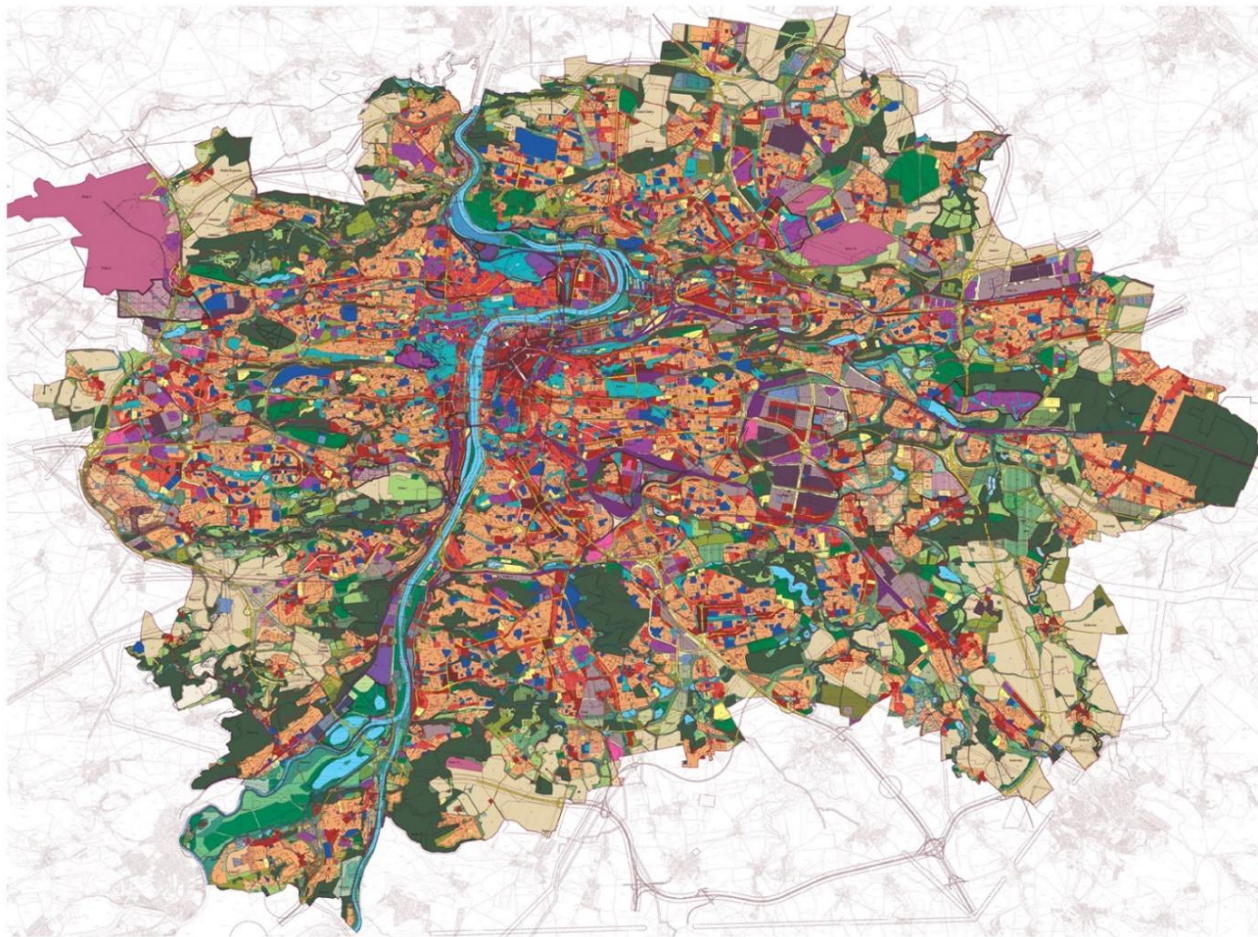


The Metropolitan Plan of Prague

- The Metropolitan Plan will replace the plan from 1999.
- The plan returns to traditional land use planning, specifying the structure of the city.
- There was an in-depth public participation process.
- The plan is currently in the **review process** and is expected to be approved next year.

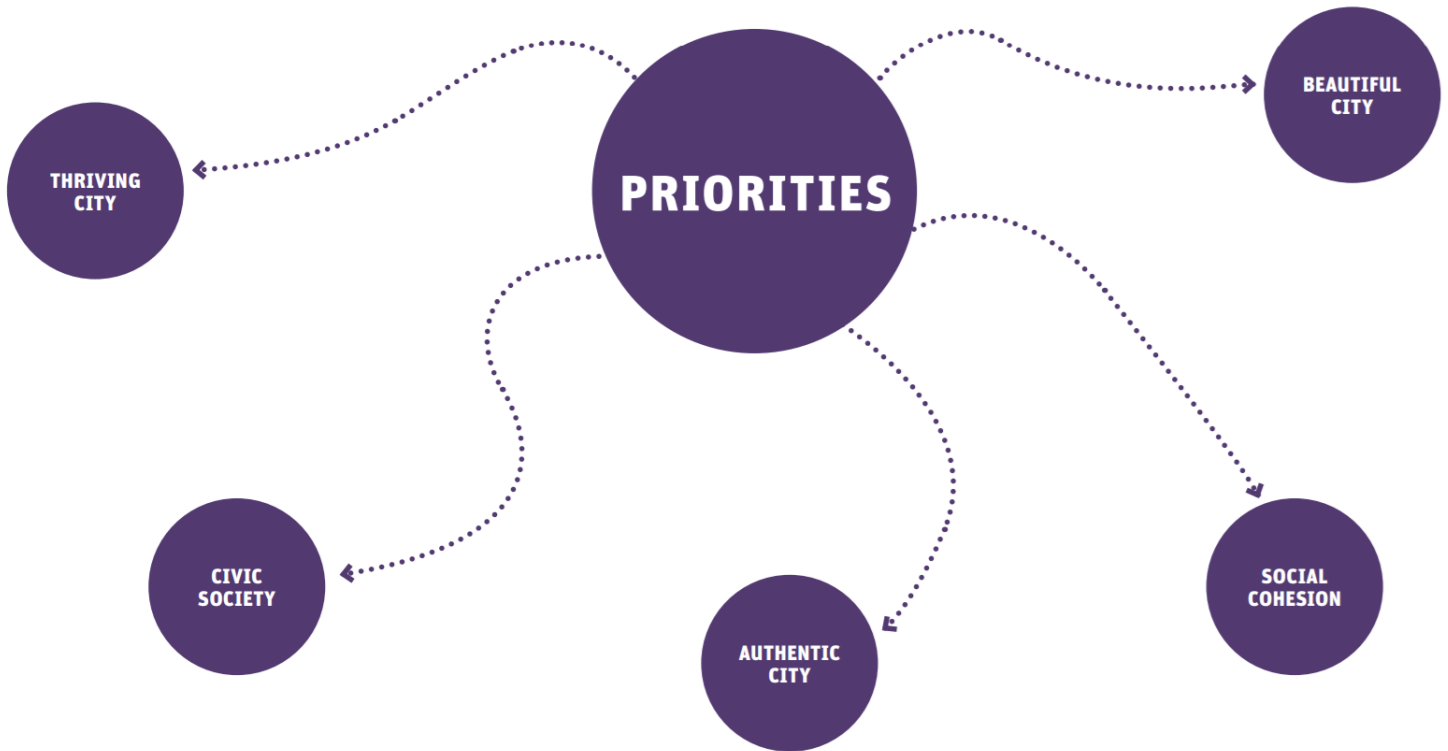


The 1999 Plan vs. the Metropolitan Plan



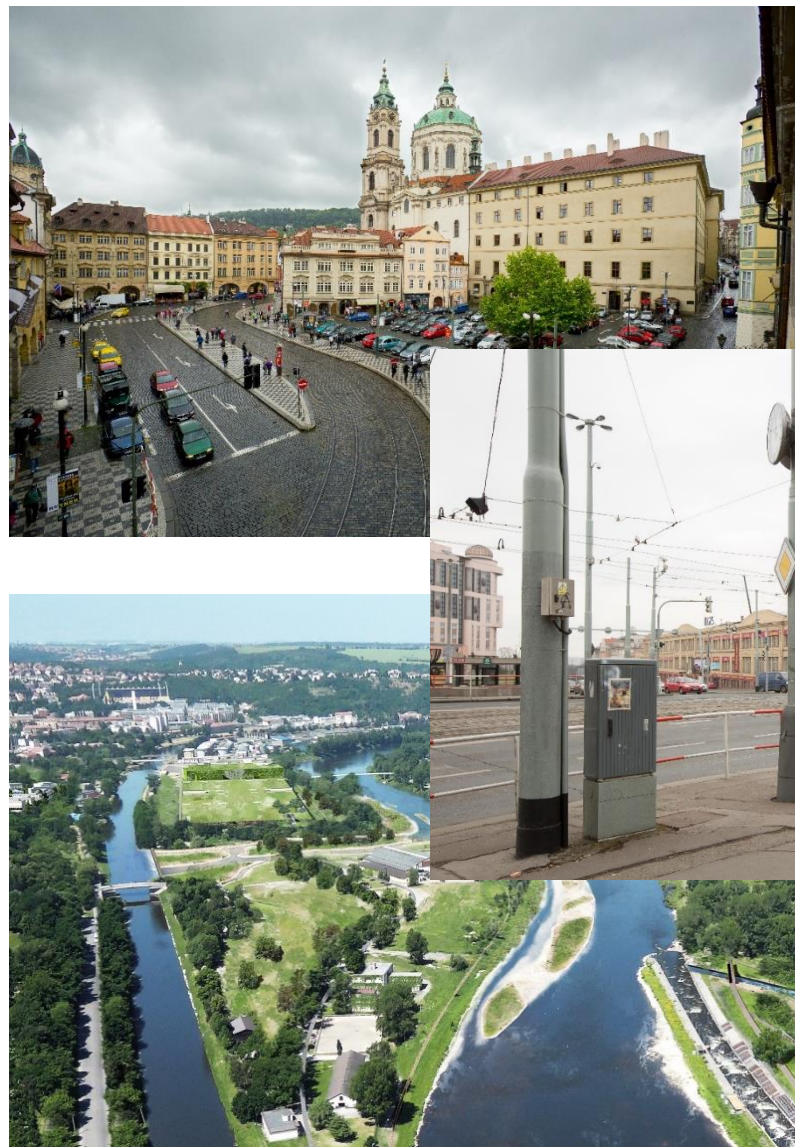
Strategic Plan of Prague

- The goal was to create a clear, practical, and flexible strategic plan.
- The first implementation program began in 2018.
- Talk of updates to include the housing crisis, circular economy, and a greater emphasis on sustainability.



Public Space

- We created a Public Space Design Manual to help transform Prague into a pleasant city that draws people out into public space.
- We engage in a variety of public space improvements throughout the city.



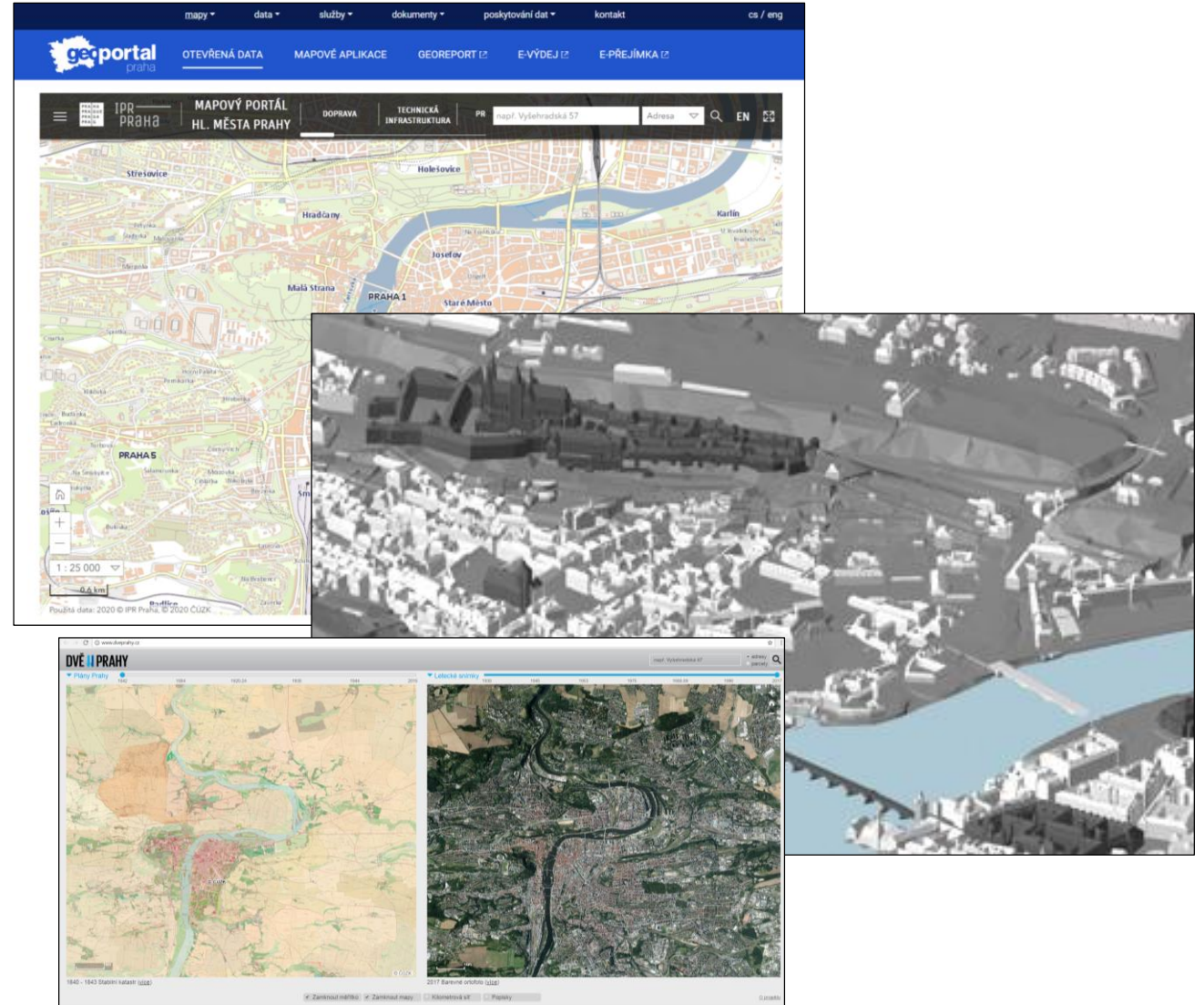
Architectural Competitions

- IPR prepares competitions for specific projects in Prague.
- Examples of previous competitions:
 - Karlovo Náměstí
 - Street furniture
 - Malostranské Náměstí
- The competition for the design of the Vltava Philharmonic Hall is currently underway.



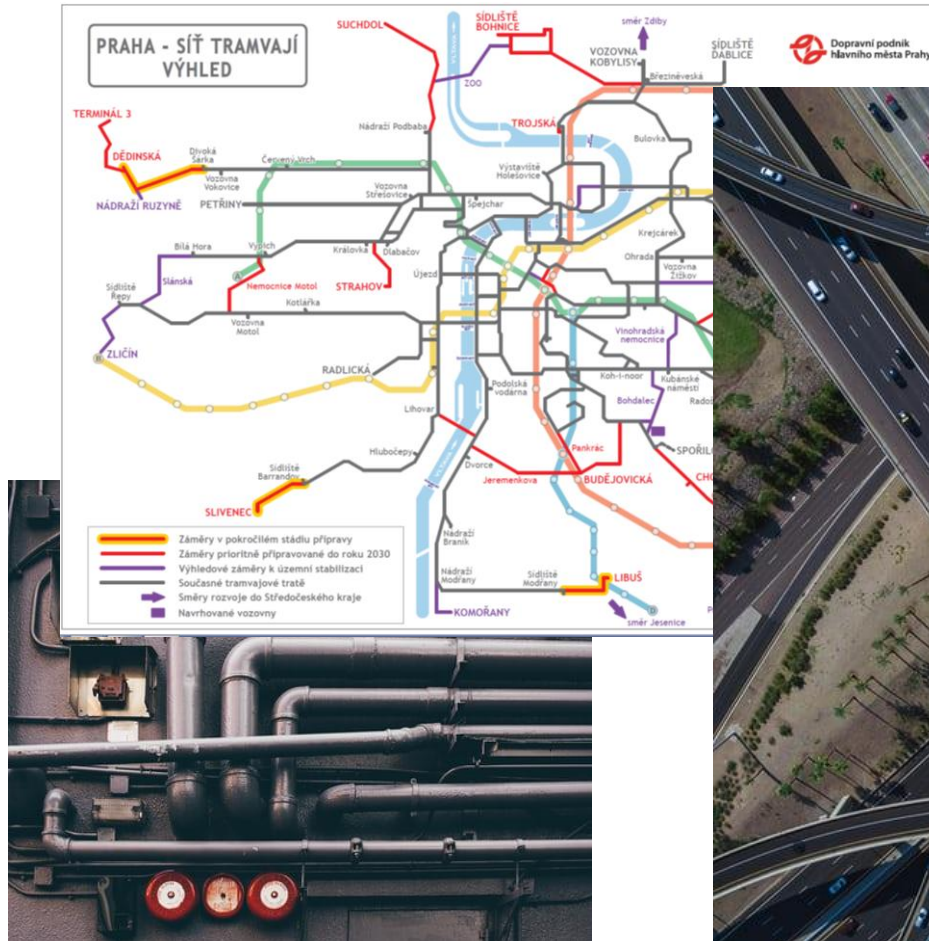
Geographical Data

- IPR administers the basic geographical data for all urban governance activities in the city.
- We maintain the geoportal with access to over 30 maps of Prague.
- We administer the 3D model of Prague and other applications like “Two Pragues”.



Transport and Technical Infrastructure

- We provide expert traffic and transport advisory services for the city and coordinate between other sections of IPR, city districts, and other city agencies.
- We deal with issues of water and electricity supply, sewage, flood protection, and other technical infrastructure.



Green infrastructure

- We work on the development of blue-green infrastructure in the city.
- We also deal with the issues of climate adaptation, park and landscape management, air quality, waste management, and acoustics.



Participation

- IPR created the **Manual of Public Participation** in 2016.
- We “participate” projects such as public realm improvements, street reconstructions, and the Metropolitan Plan.
- We conduct training for developers and city districts.
- We are currently training “participators” in city districts as part of a pilot project.



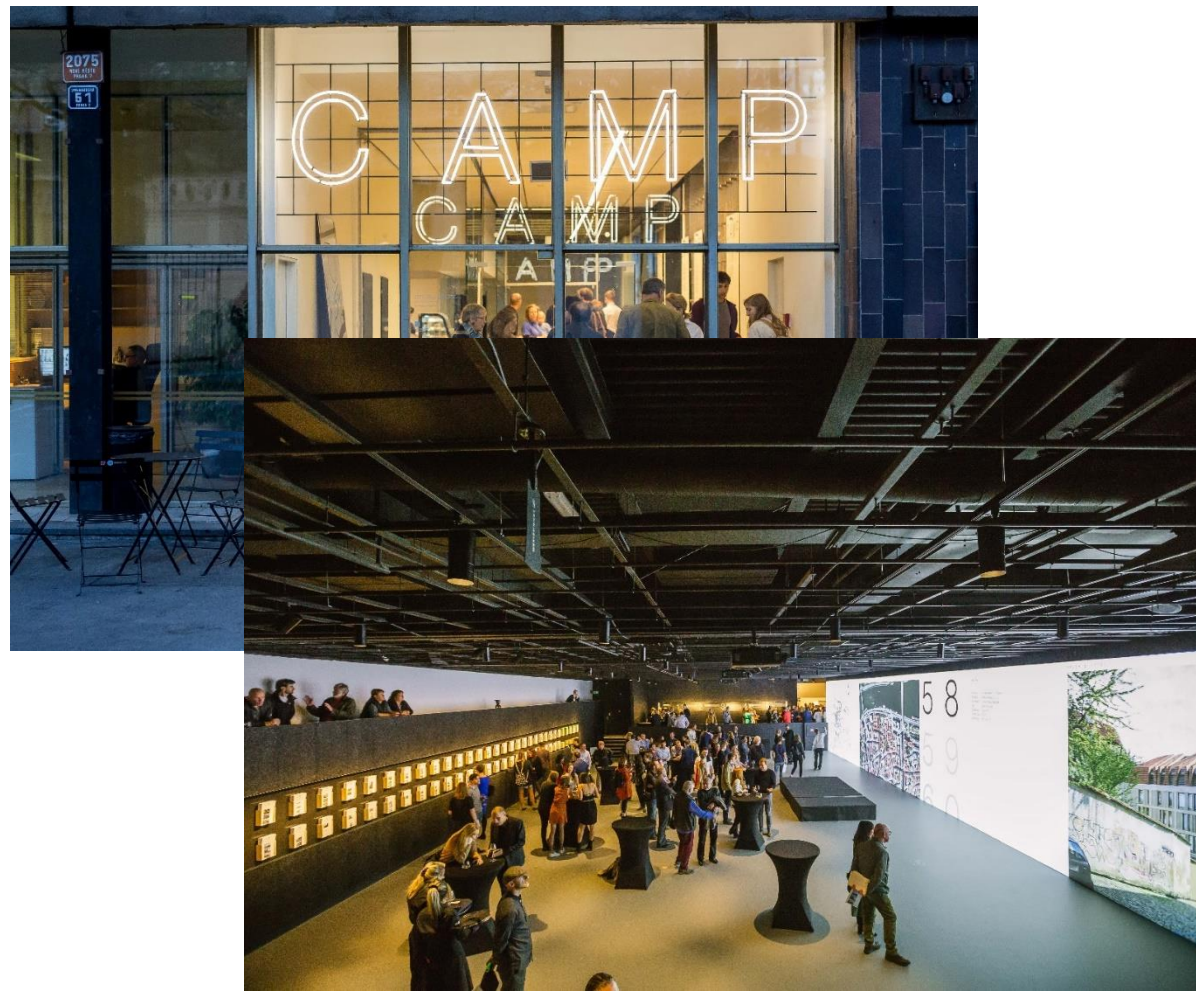
International Relations

- We engage in international cooperation.
- We participate in studies and meetings with the OECD, ESPON, UN Habitat, and others.
- We seek out and administer EU-funded projects.
- We are active members of the EUROCITIES network and various working groups.
- We administer IPR's [English website](#).
- We publish a quarterly [International newsletter](#).
(Please sign up!)



Center for Architecture and Metropolitan Planning

- The goal of CAMP is to improve public discourse about development in Prague.
- We have a rich program of public discussions, presentations, workshops, screenings, and other activities.
- We administer the portal prahazitra.camp, which provides an overview of development projects in Prague.



THANK YOU

WWW.IPRPRAHA.CZ

EISENBERGER@IPR.PRAHA.EU