

PRA HA  
PRA GUE  
PRA GA  
PRA G

# Prague Integrated Transport

and Regional Organisr of Prague Integrated Transport

Overview presentation – April 2022



**pid** pražská integrovaná  
doprava





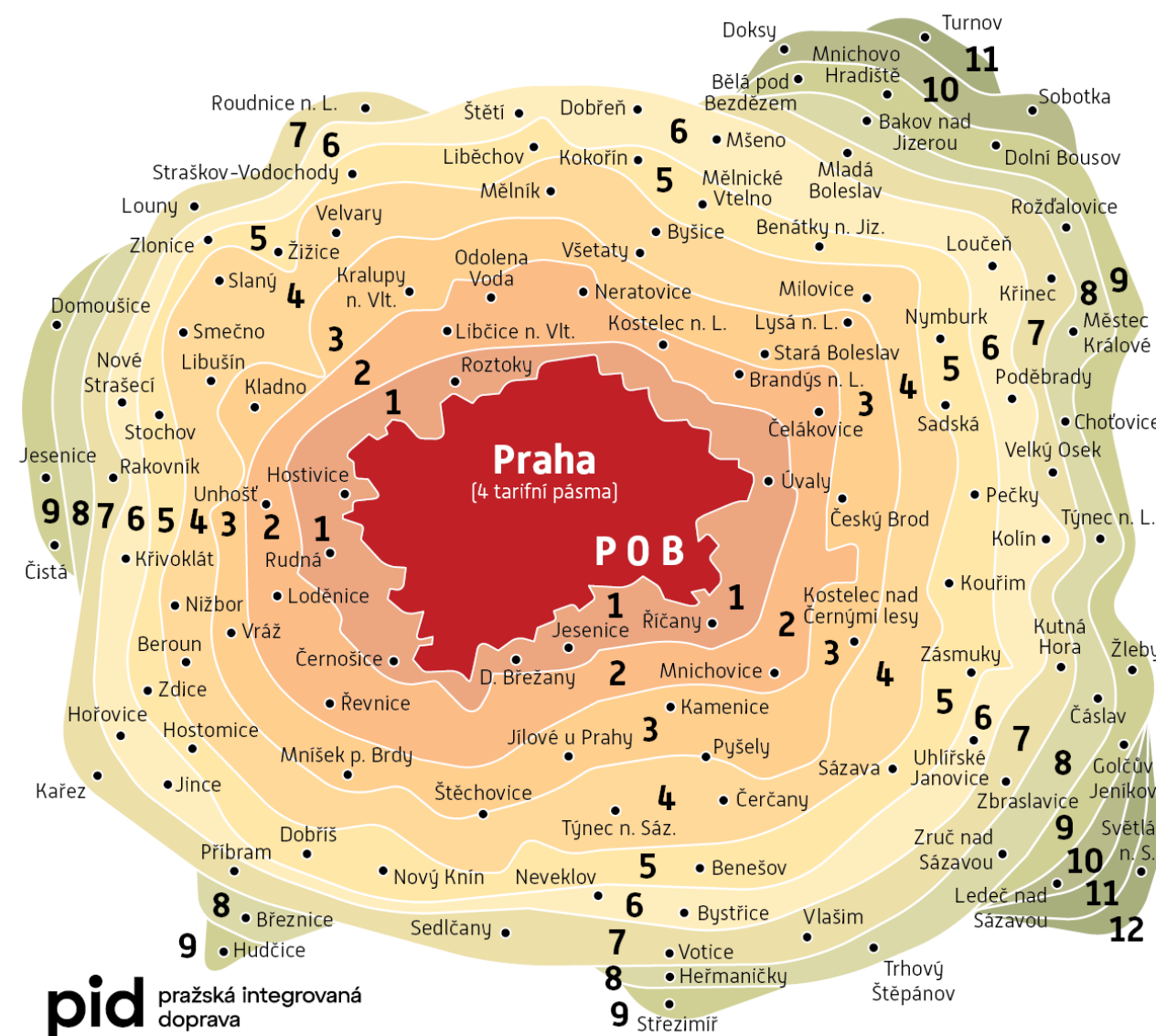
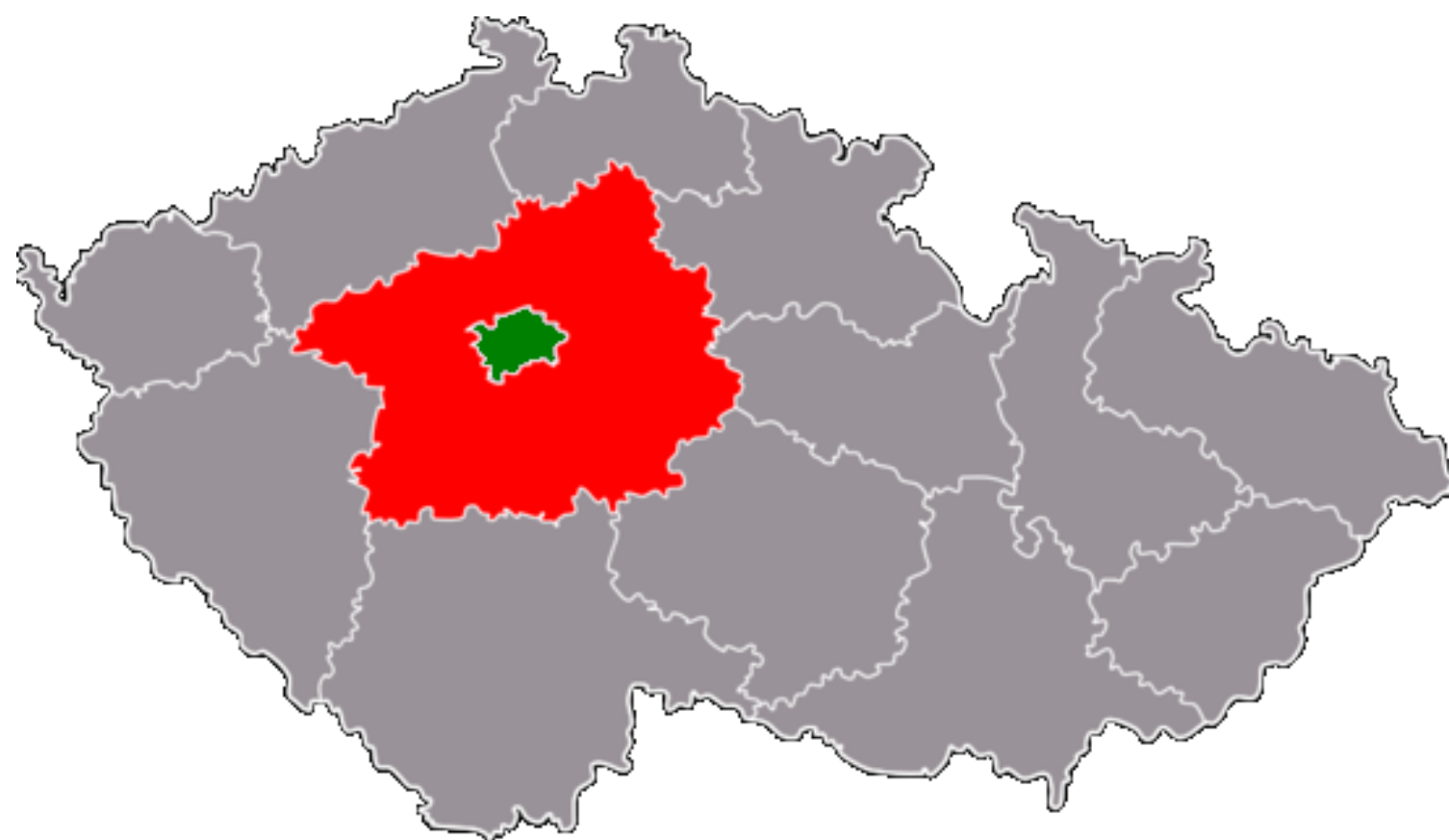
# Prague, Central Bohemia, Prague Integrated Transport

- Czech Republic = 10,7 milions inhabitants
- Prague = 1,3 milion inhabitants
- area of Prague Integrated Transport = 2,5 milions inhabitants  
(Prague + Central Bohemia + small surroundings)

PRA  
PRA  
PRA  
PRA

HA  
GUE  
GA  
G

Středočeský kraj



# Prague Integrated Transport (PID) and ROPID

orderers (giving subsidies)



Středočeský kraj

organisers of system

**ropid idsk**

30 carriers (operated on 632 lines)



ONE SYSTEM  
FOR WHOLE REGION

**pid**

**ropid** regionální organizátor  
pražské integrované dopravy

city-funded institution,  
established at 1993

employees: 130

organization structure:

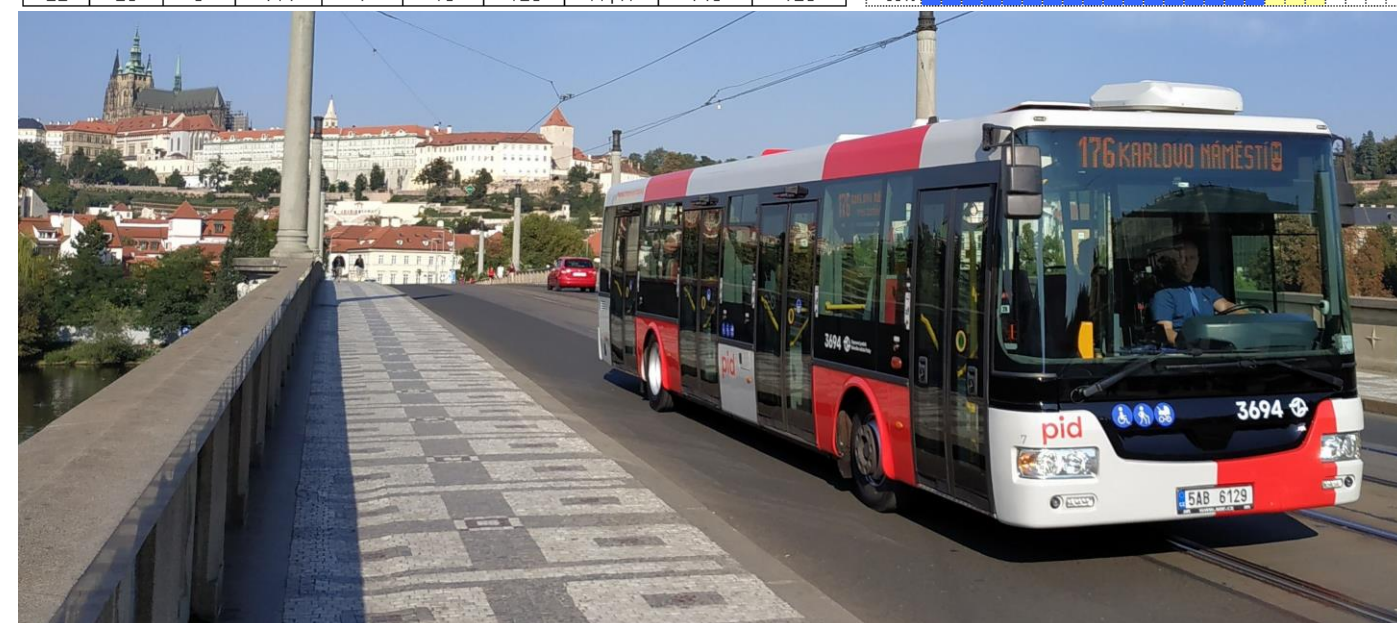
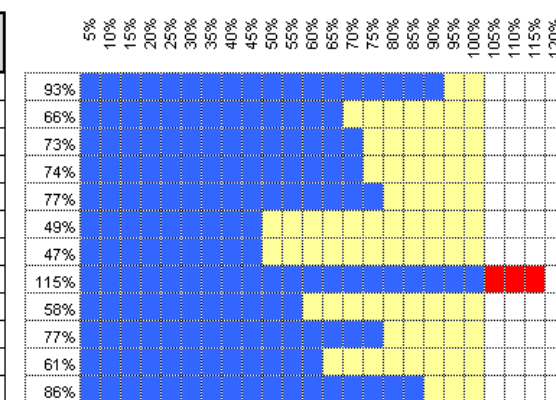
- department of city transport
- department of suburban transport
- department of economics
- department of controlling
- department of technical development
- department of marketing



# Main tasks of the ROPID organization

- solution of the PID system
- formdesign of lines, timetables, transfer points
- negotiating contracts with individual carriers and subsequent supervision of their performance
- management of financial flows in the system, redistribution of subsidies and revenues to individual carriers
- processing the form of the tariff according to political decisions
- supervision of uniformity of appearance and information
- service quality control (accuracy, purity, information)
- passenger counting (network, profile)
- survey (passenger behavior)  
overall satisfaction with the system is growing (87 % in 2013 and 94 % in 2016)

linka	poř.	typ vozu	příjezd	výstup	nástup	odjezd	čas odjezd	nabídka	poptávka maxprofil
10	7	8	130	10	10	130	17,25	140	130
22	20	8	92	10	8	90	17,26	140	92
16	3	9	87	9	17	95	17,29	130	95
10	8	8	93	6	16	103	17,33	140	103
22	21	8	105	5	8	108	17,33	140	108
22	22	8	62	3	9	68	17,35	140	68
22	23	8	60	1	7	66	17,36	140	66
16	4	9	145	5	10	150	17,39	130	150
10	24	9	85	0	10	75	17,41	130	75
22	24	9	96	8	12	100	17,41	130	100
16	5	9	72	8	15	79	17,45	130	79
22	25	8	111	7	16	120	17,47	140	120







# Prague Integrated Transport (PID) – zones, tickets

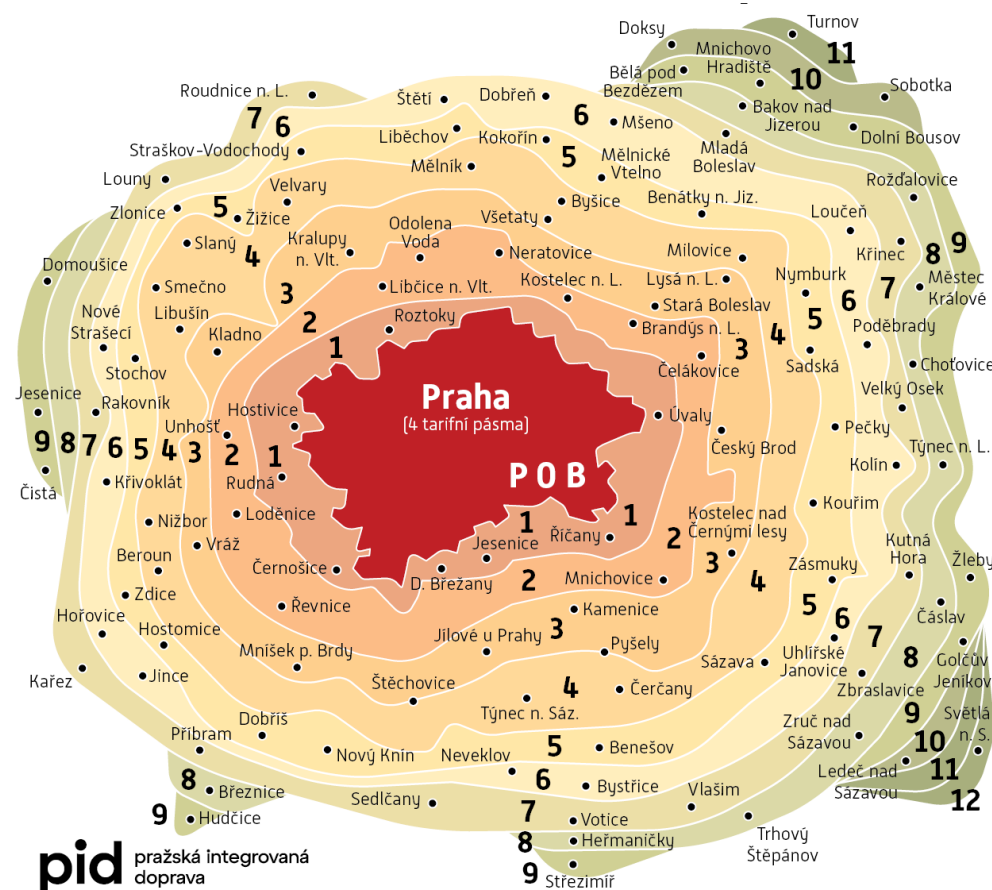


- 1 network
- 1 tariff
- 1 ticket
- 1 timetable

since 1993

pid

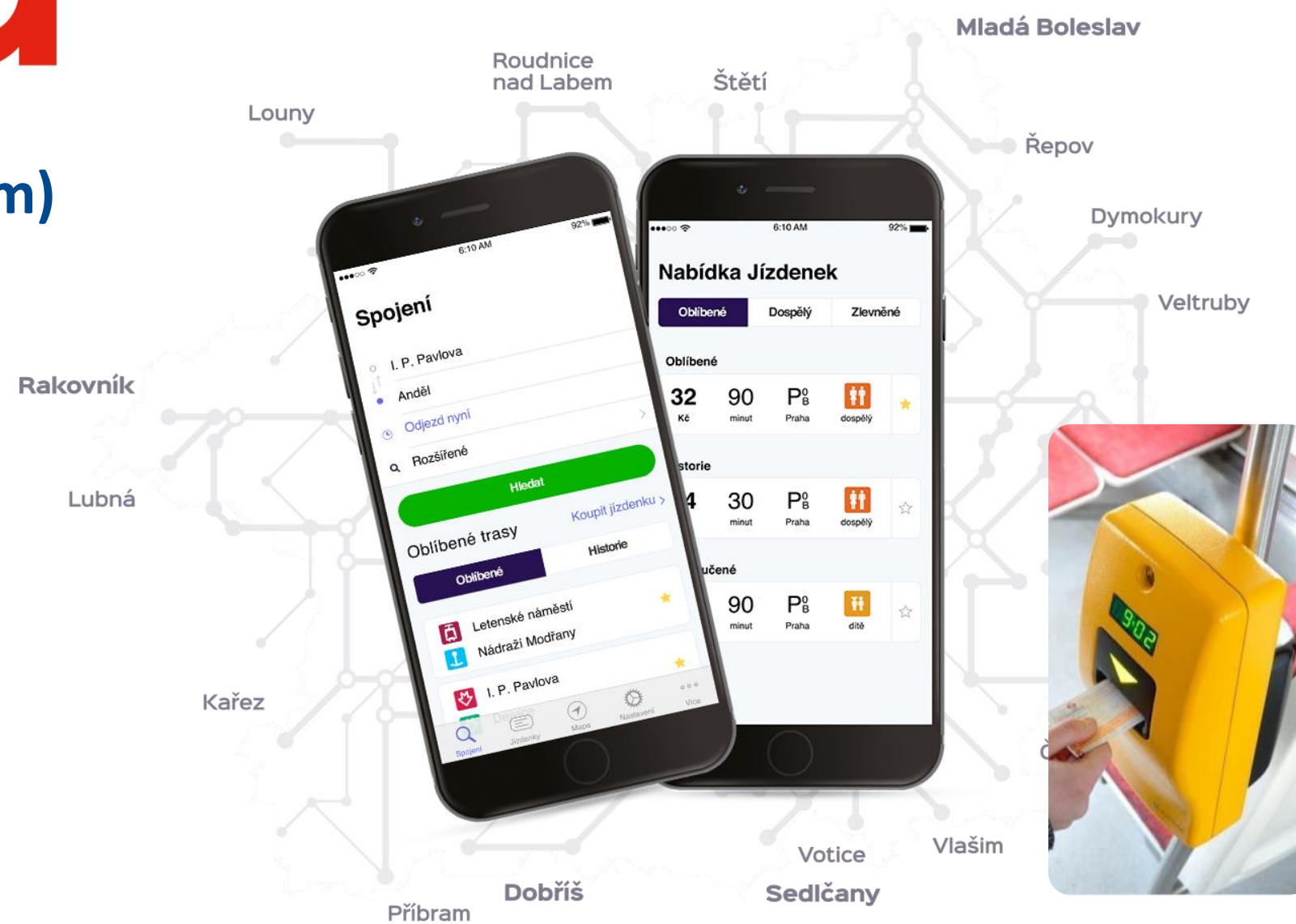
12 tariff zones around Prague (90 km)



**all tickets are transferable:**  
(30-300 minutes, 1-3 days, 1 month-1 year, on paper with validation, in mobile phone)

**discounts:** till 26 years and from 60 years

**free:** till 6/15 years and from 65/70 years, disabled, prams, bikes, small luggage



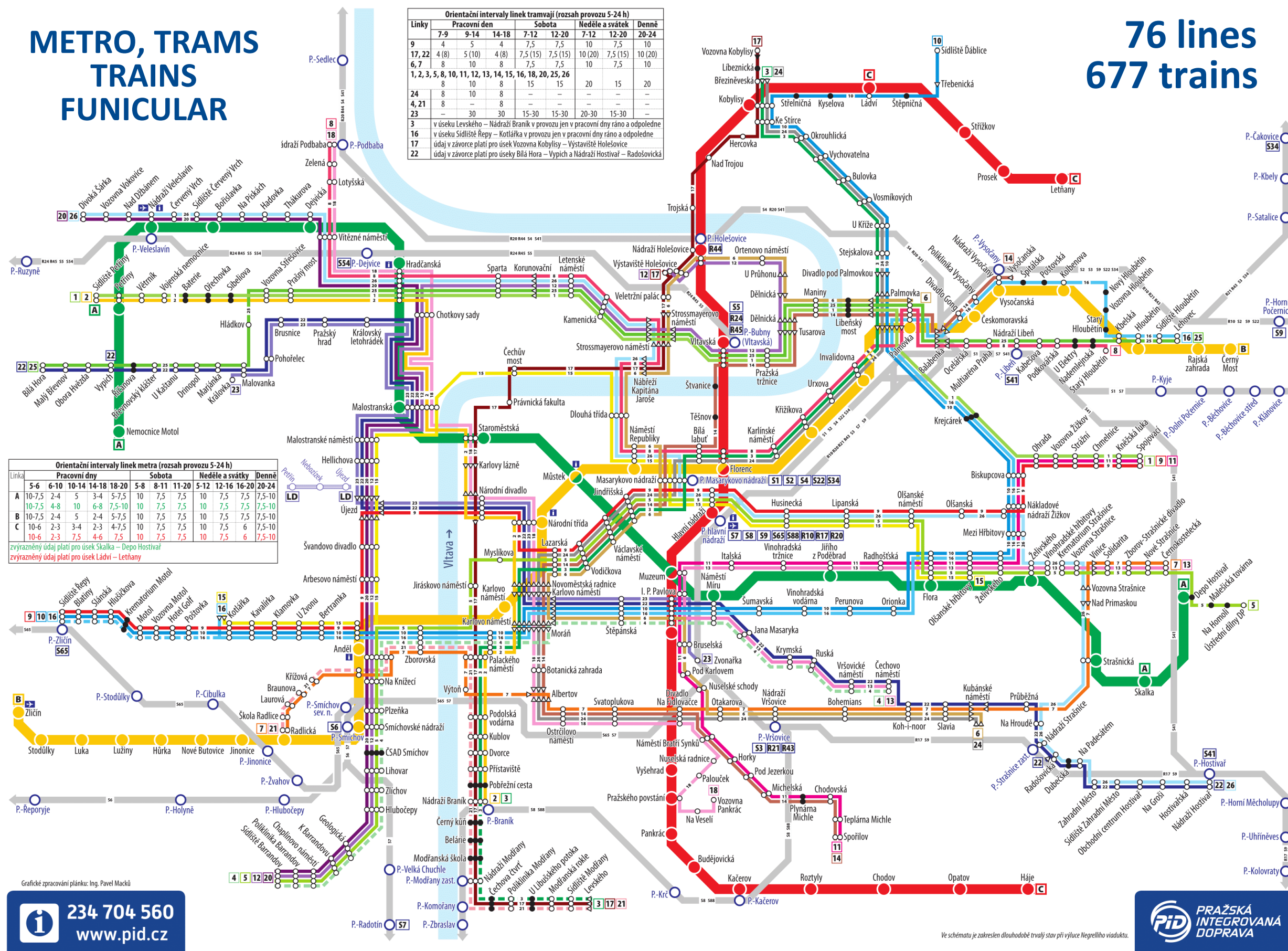




# PID – Railways network in Prague

METRO, TRAMS  
TRAINS  
FUNICULAR

76 lines  
677 trains

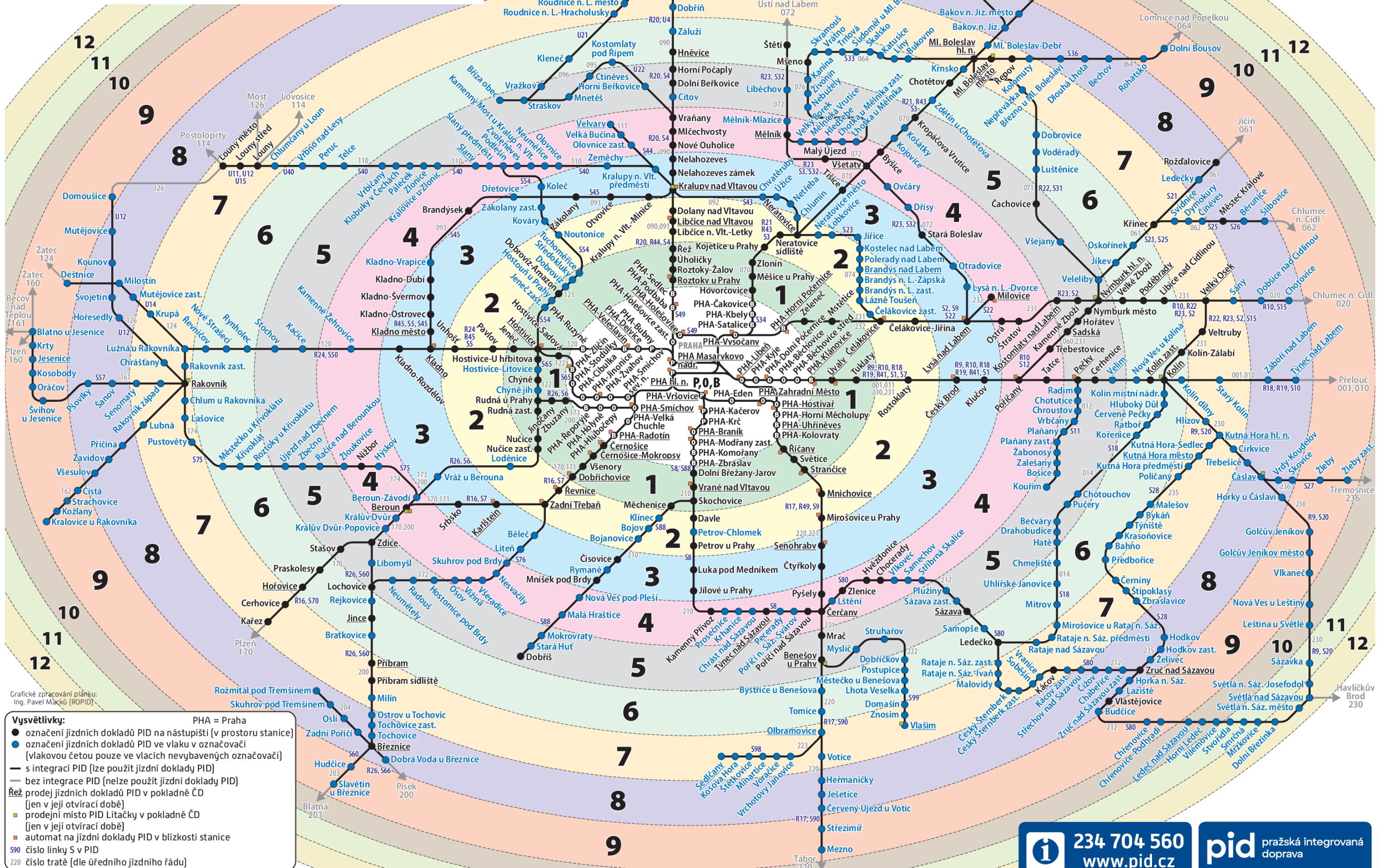




# RAILWAYS AROUND PRAGUE

## 90 km around city of Prague

### 12 tariff zones, 491 stations



234 704 560  
www.pid.cz



pražská integrovaná  
doprava

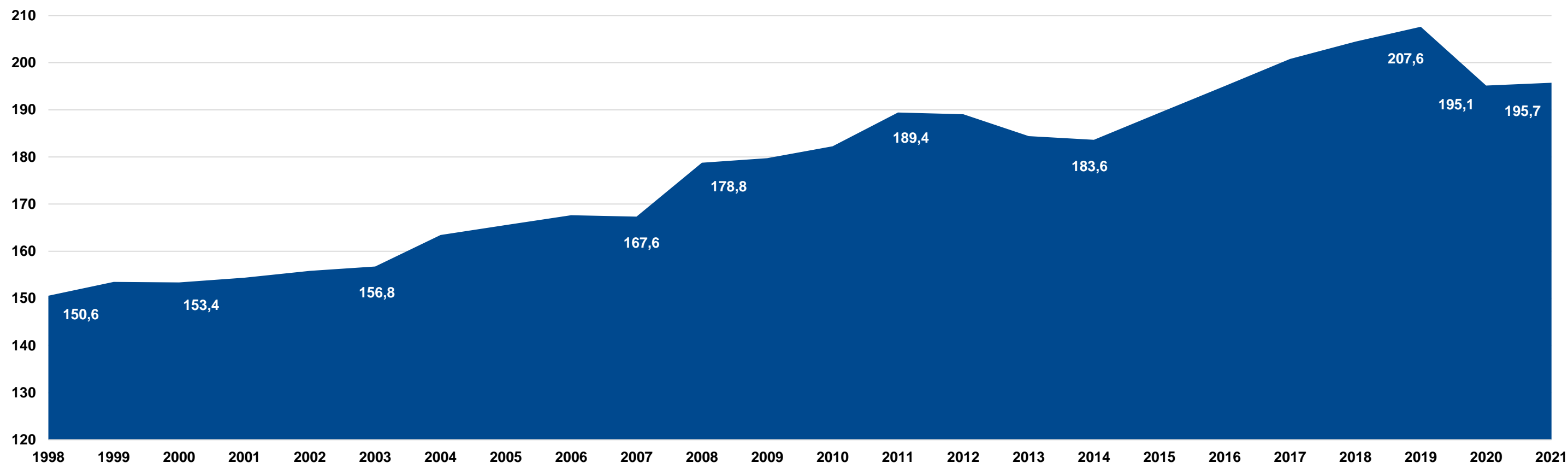




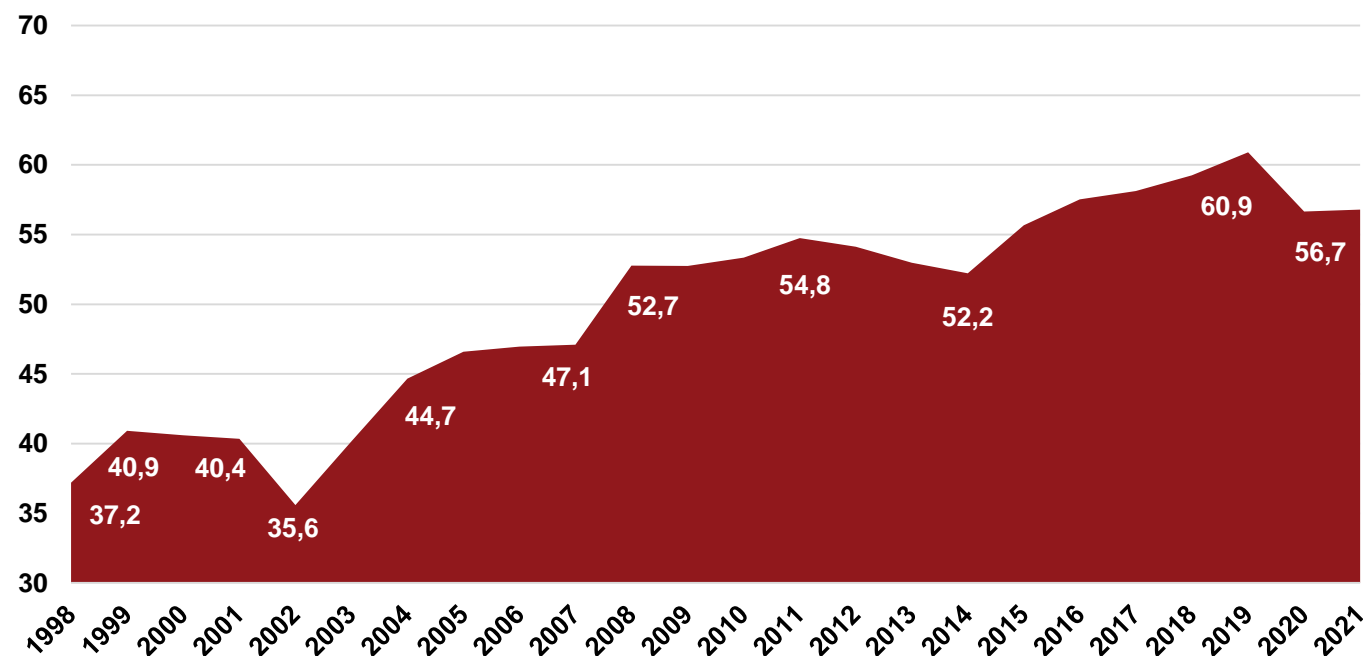


# Prague Integrated Transport – annual performance

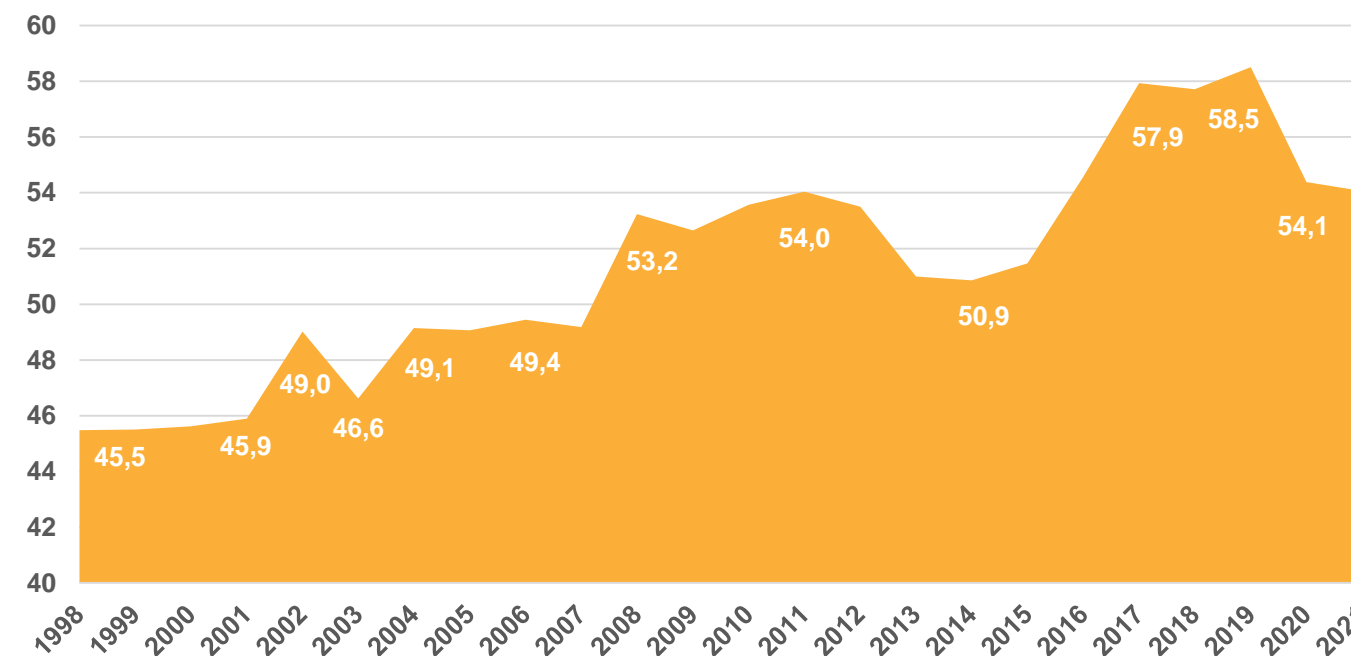
Annual Prague Integrated Transport performance 1998-2021 - METRO, TRAMS, BUSES, TRAINS (millions vehiclekilometres/year)



METRO annual performance 1998-2021



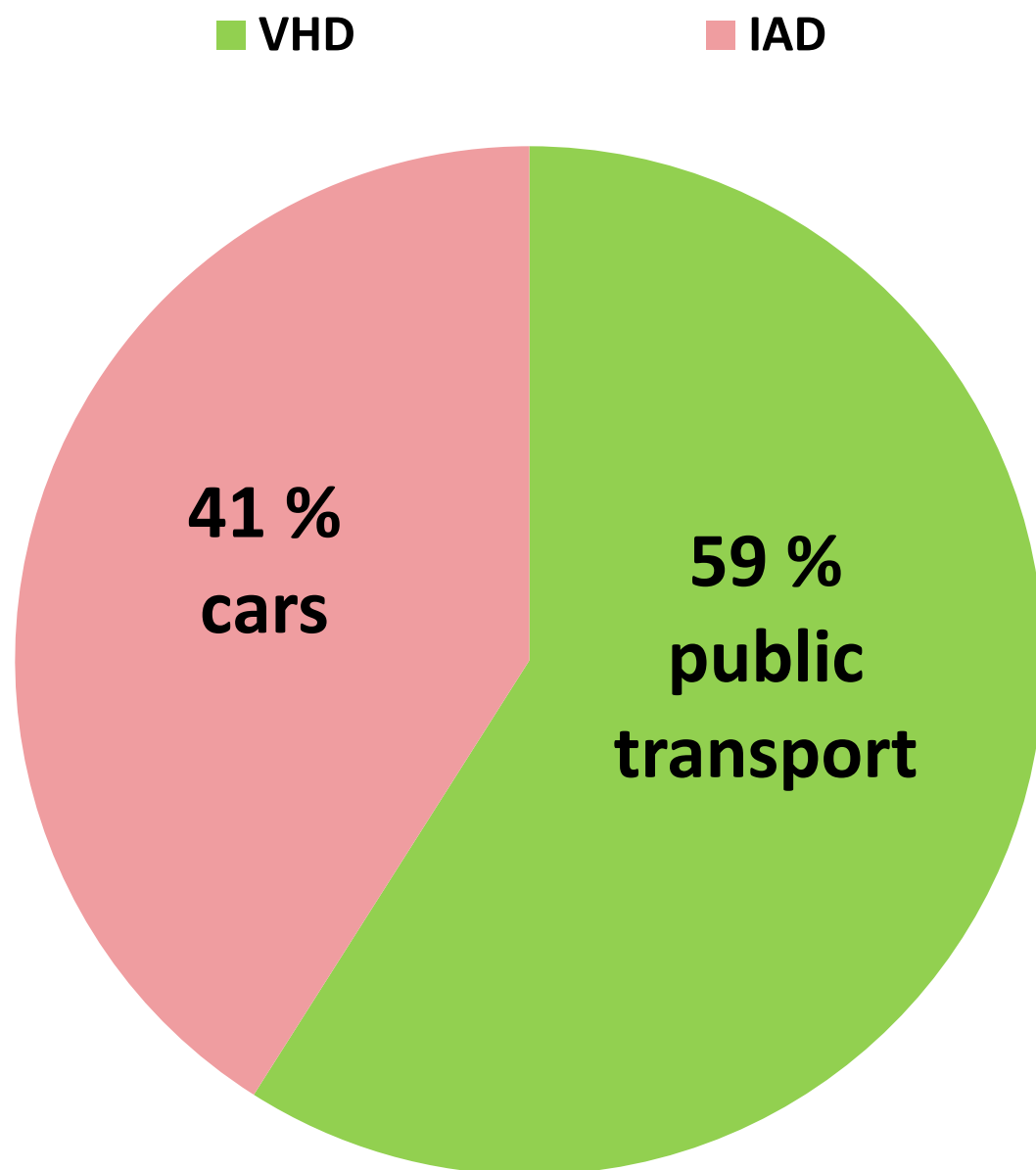
TRAMS annual performance 1998-2021



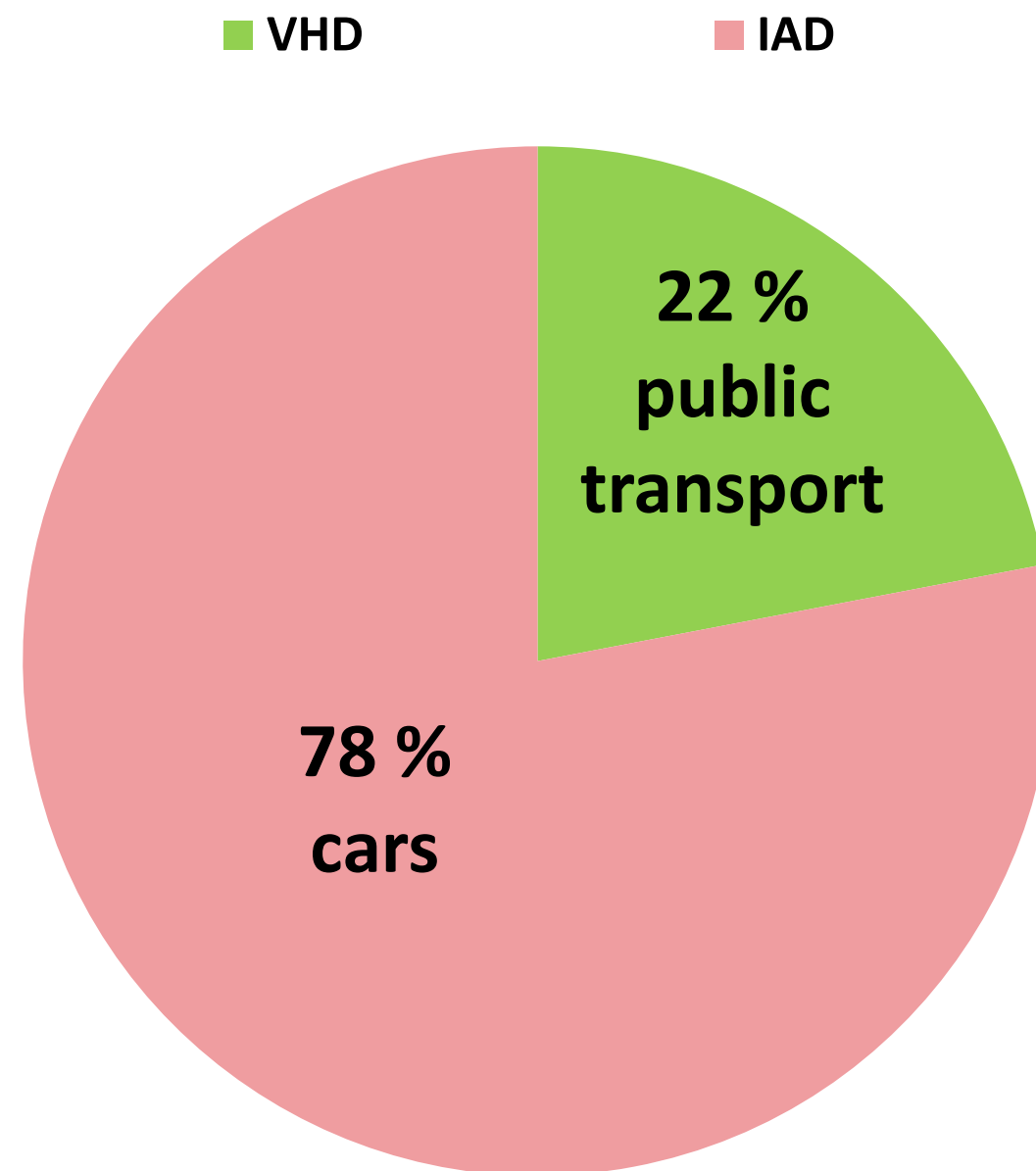


# Trips in Prague and incoming trips to Prague

## MODAL SPLIT PRAGUE



## MODAL SPLIT INCOMING TRIPS

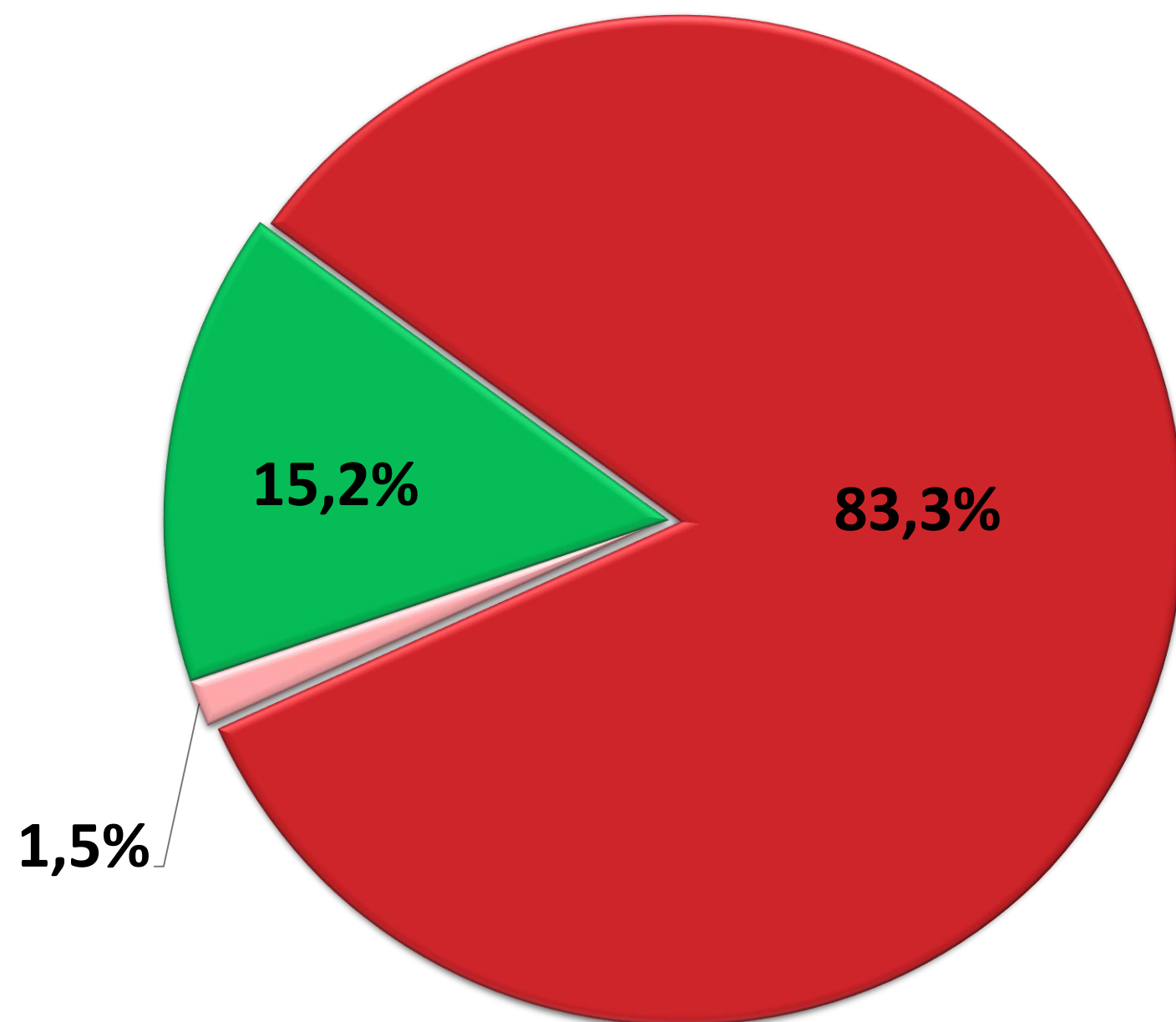






# Year costs PID in Prague and number of connections

■ city subsidies ■ state subsidies ■ revenues



overall year operation costs in 2020:  
**19,8 billions CZK (800 millions EUR)**

revenues:

**3 billions CZK (120 millions EUR)**

Usual work day in  
Prague:

Metro connections

**1 800**

Tram connections

**6 600**

Bus connections

**25 300**

Train connections

**1 100**

**OVERALL 34 800  
connections/day**

**4 100 000 passengers/day**

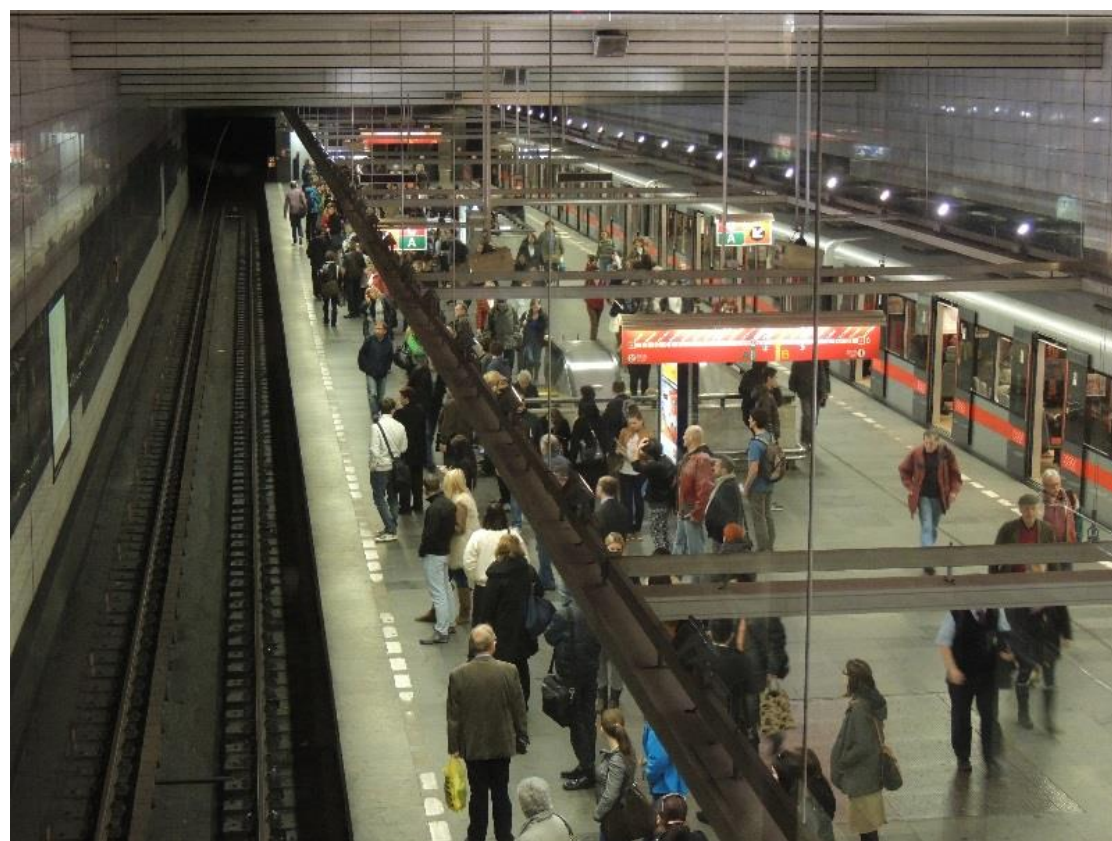
# About PID network – intervals

	metro	trams	city buses	suburb. buses	trains
peek hours	1-2 min	4-8 min	6-12 min	5-30 min	10-30 min
noon	3-4 min	5-10 min	15-30 min	15-60 min	30 min
weekend	5-7,5 min	7,5-15 min	7,5-15 min	30-60 min	30-60 min
evening	7,5-10 min	10-20 min	10-20 min	60 min	60 min
night	x	20-30 min	20-30 min	1-2 connect.	1-2 connect.





# Metro in Prague





# Trams in Prague





# Buses in Prague and Central Bohemia





# Trains in and around Prague





# Funicular and ferries in Prague







# Night public transport in Prague

**9 tram lines (91 – 99)**

**15 city bus lines (901 – 915)**

**10 suburban bus lines (951 – 960)**

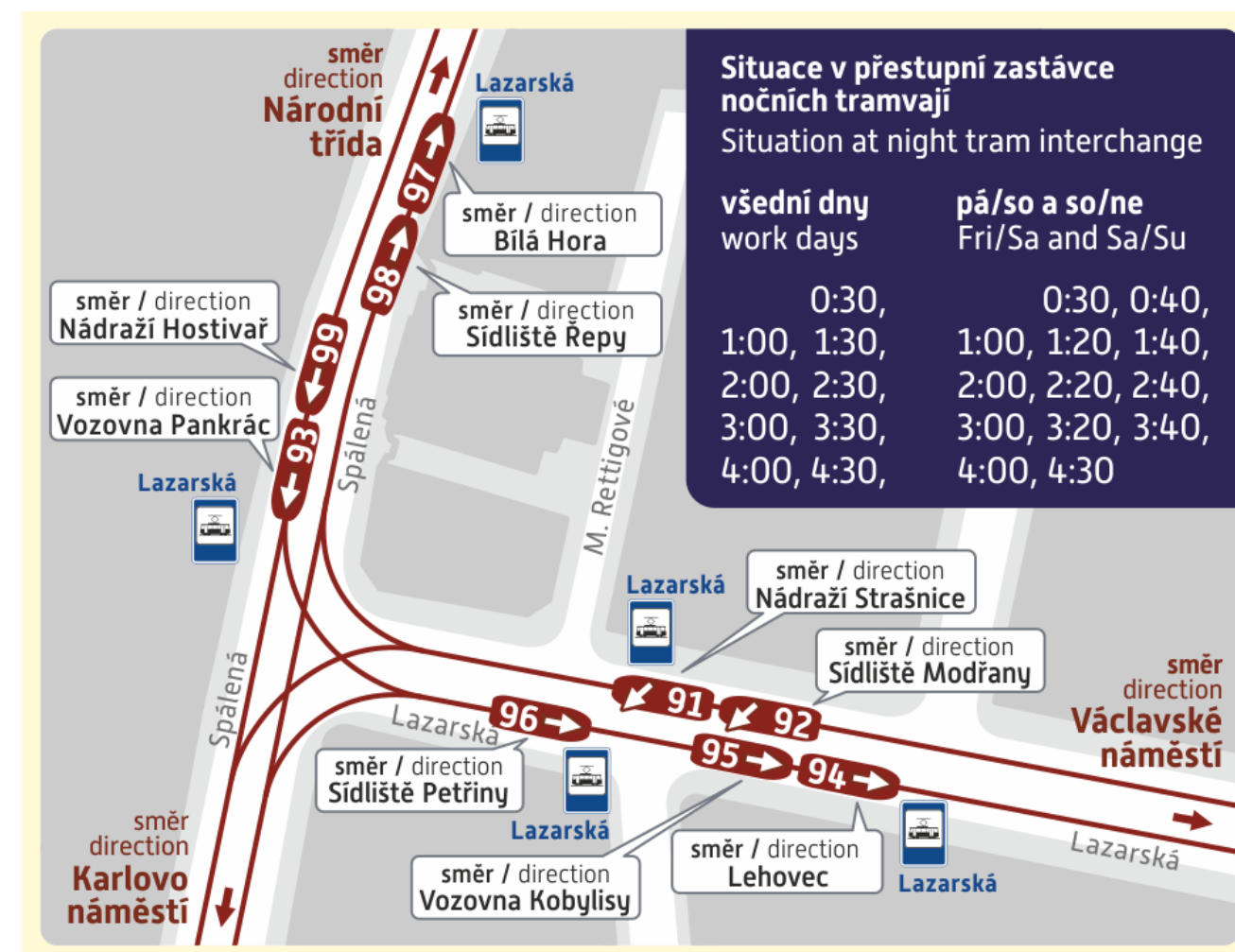
**8 train lines (S1 – S9, weekend night)**

**operation: 0:30 - 4:30 AM**

**32 000 passengers/night**

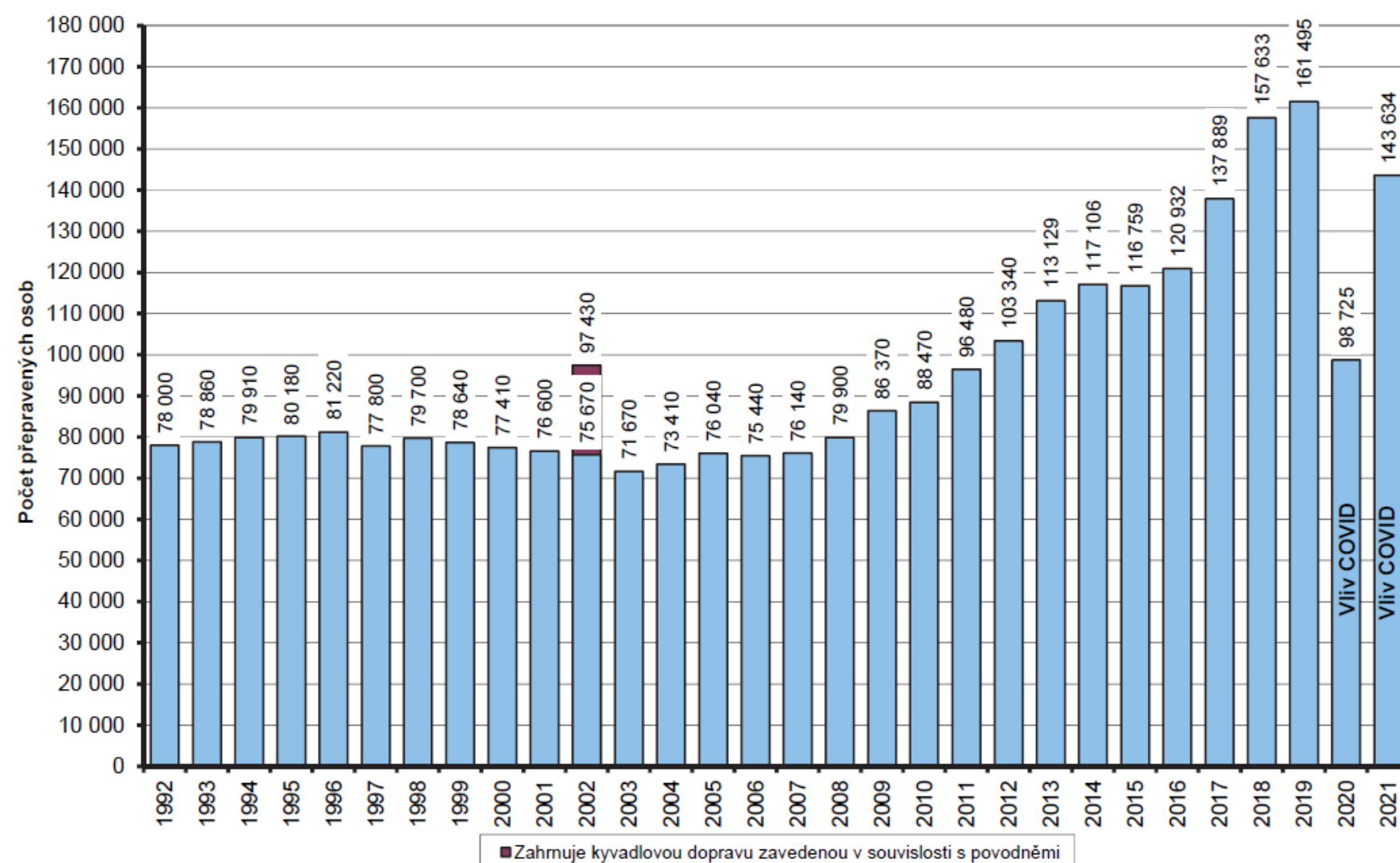
**stops with night operation: 737**

**tickets: usual 1 way (transferable),**  
**1 day**  
**3 days, month, year**  
**(approx. 1,2 EUR/30 minutes,**  
**5 EUR/day)**





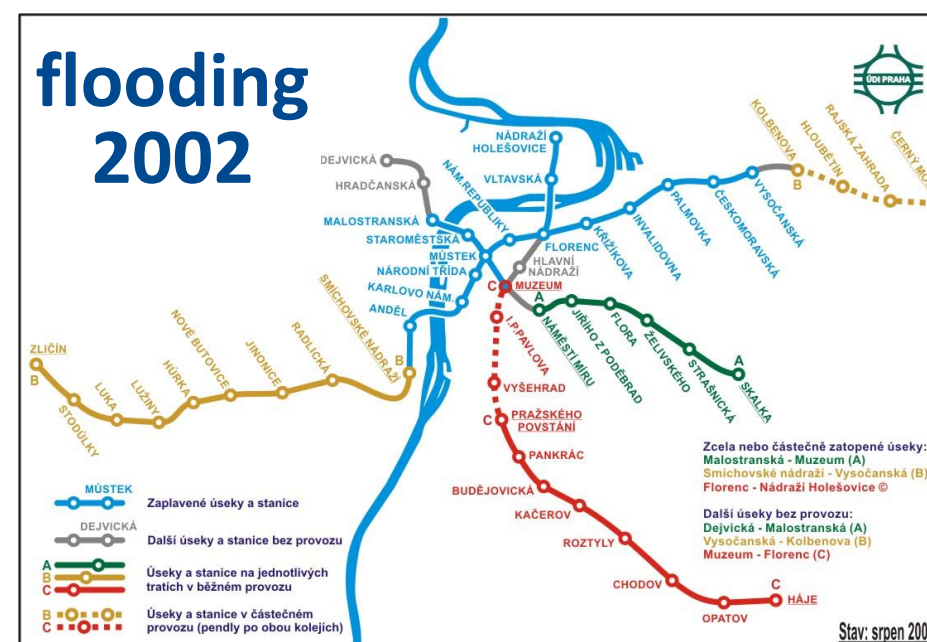
# 30 years of trains in PID system



passengers/day:

1992: 78 000

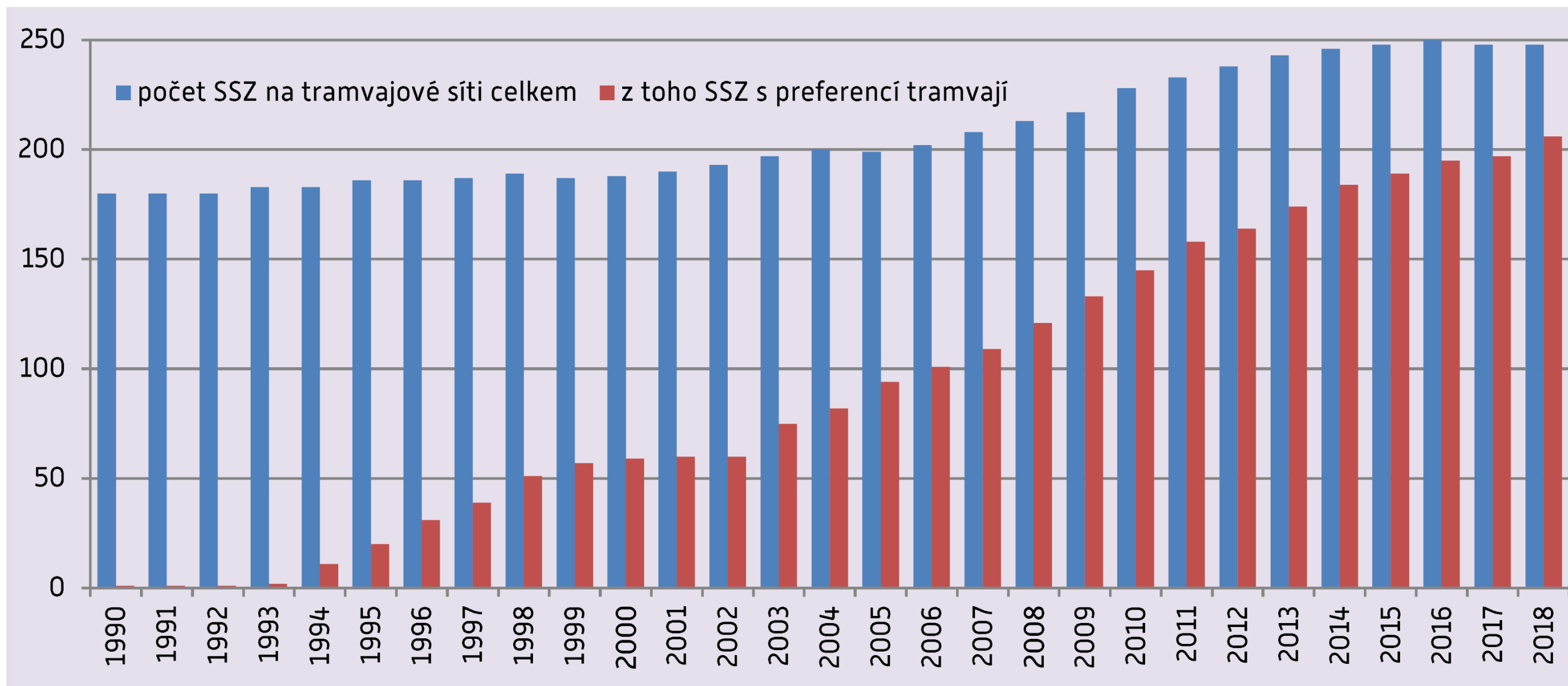
2019: 161 000







# Priority for trams – on 90 % junctions



Priority for trams on **223 out of 249 TSDs** on tram network (90 %).

Priority for buses on **251 TSDs** (in Prague around 700 TSDs).

**40,3 km** dedicated bus lines on roads  
and **15,8 km** dedicated bus lines on tram tracks.

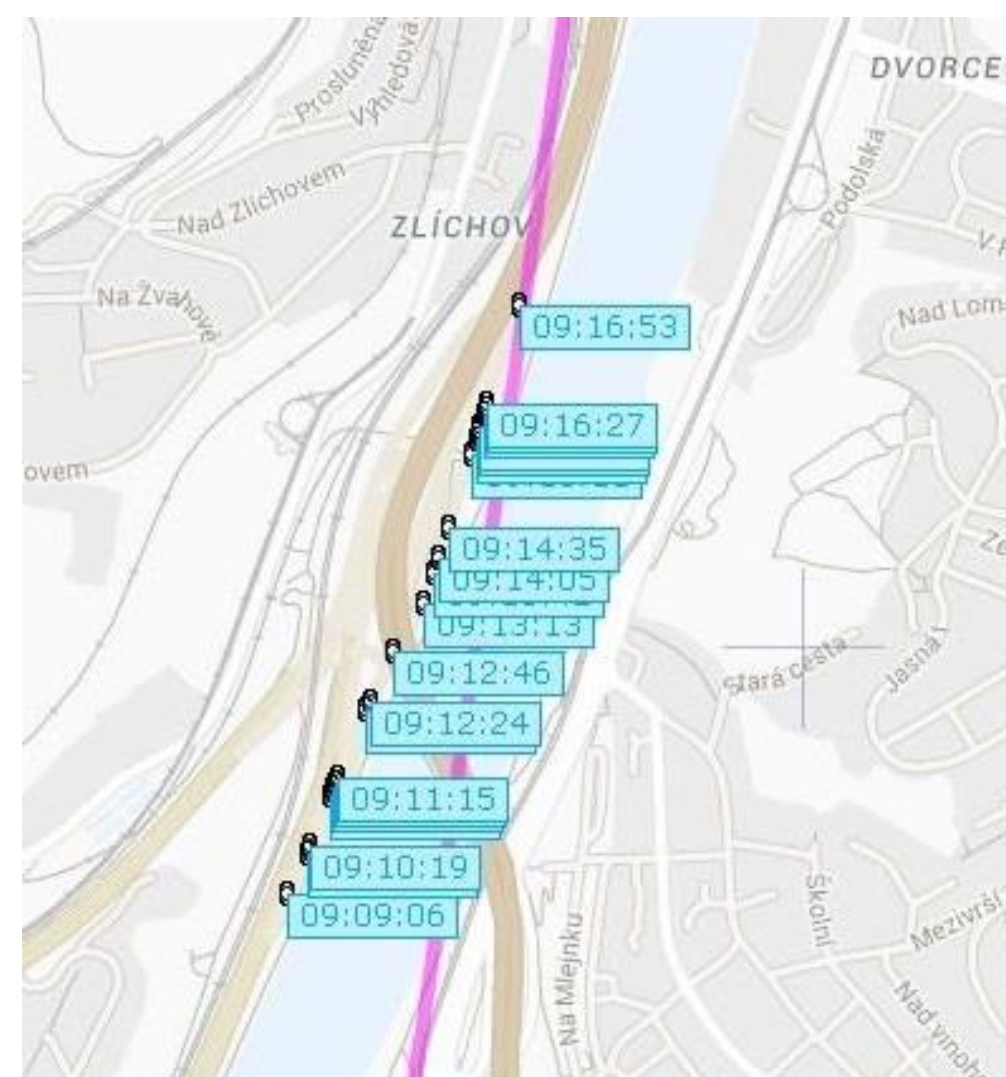
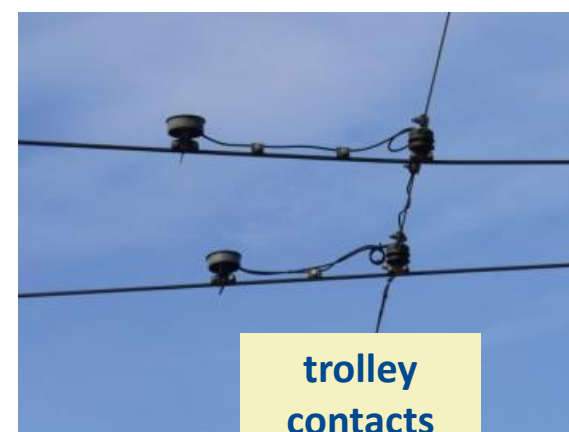
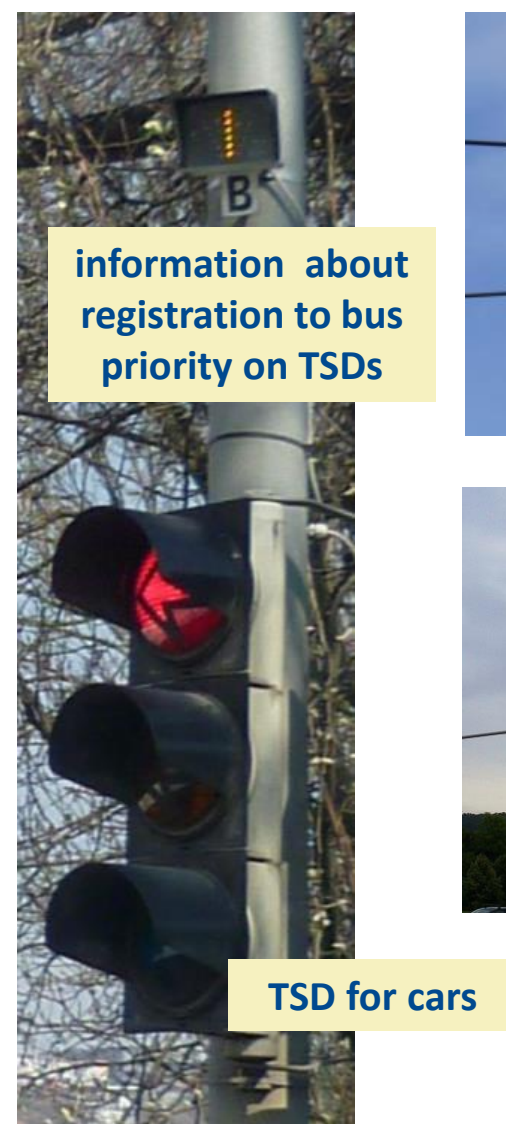


# Priority for trams – 52 % segregated tracks





## Priority for public transport – devices, bus lines, GPS





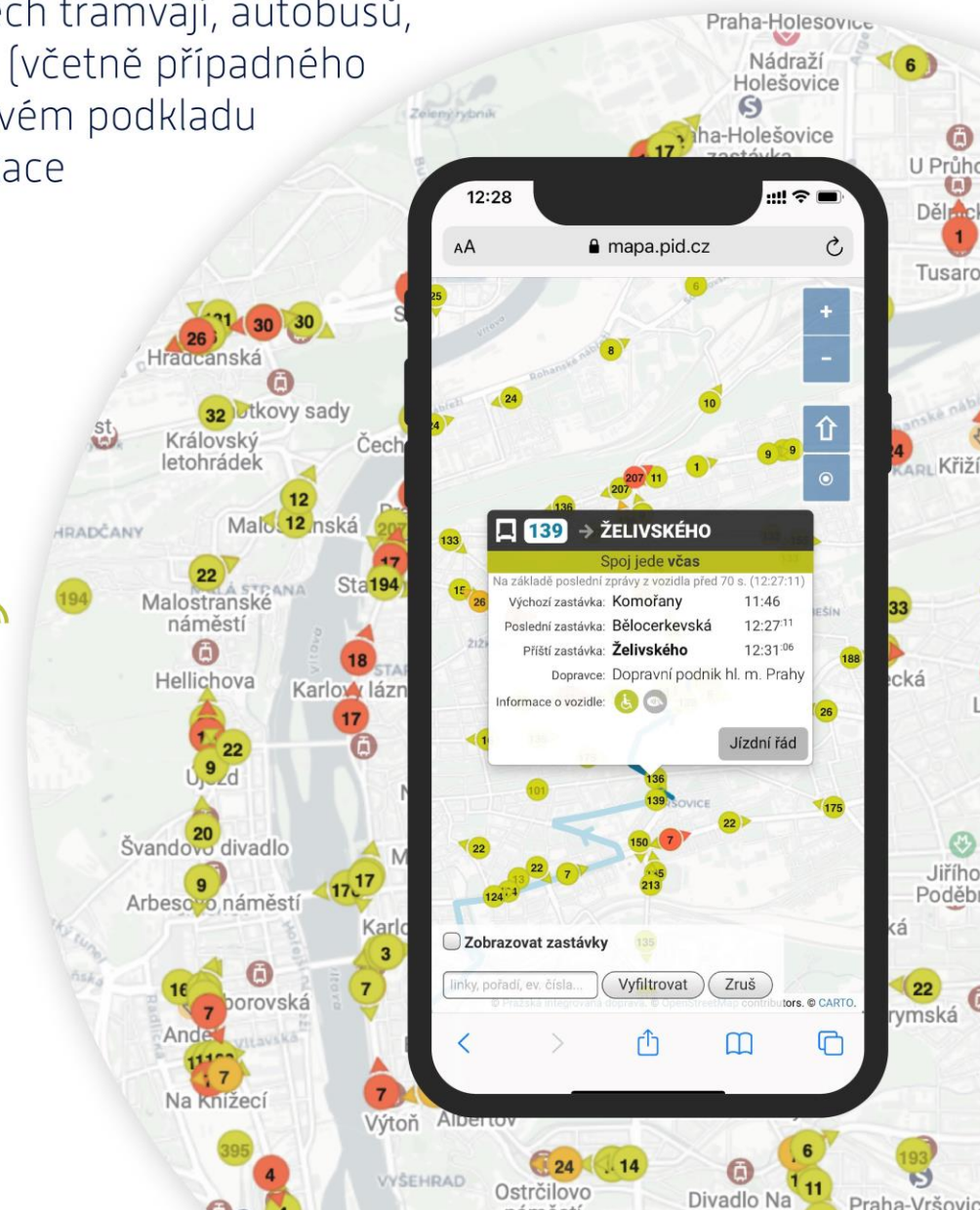
# Opendata: passenger information

- Prague data platform GOLEMIO
- Collecting data of public transport including real-time data of vehicle position
- Vehicle-position map, on-line departures, info-pannels
- Wide PT data distribution (Google, maps, other apps) for free

## On-line polohy vozidel PID

Aktuální polohy všech tramvají, autobusů, trolejbusů i přívozů [včetně případného zpoždění] na mapovém podkladu nabízí webová aplikace

[mapa.pid.cz](http://mapa.pid.cz)





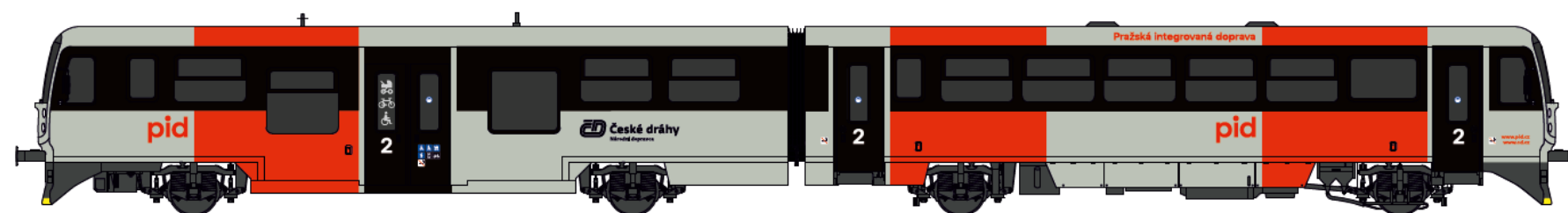
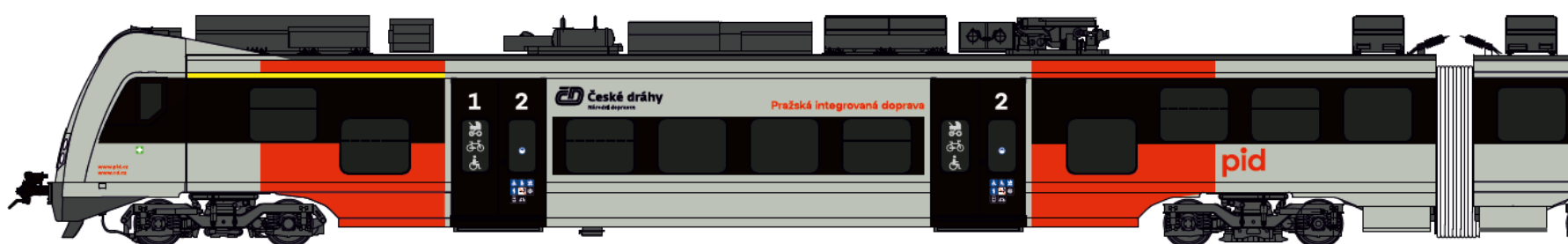
# New PID visual identity



**idsk** integrovaná doprava  
středočeského kraje

**pid** pražská integrovaná  
doprava

**ropid** regionální organizátor  
pražské integrované dopravy



**idsk** integrovaná doprava  
středočeského kraje

**pid** pražská integrovaná  
doprava

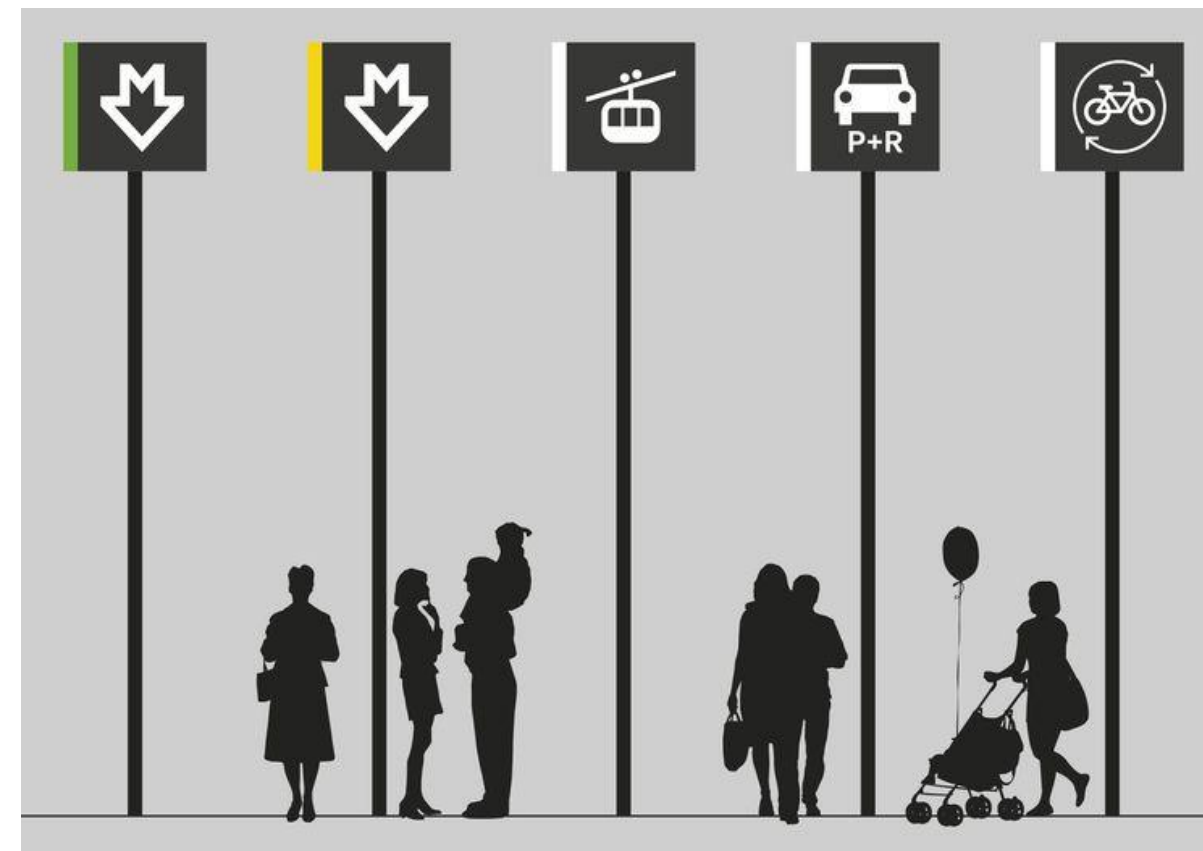
**ropid** regionální organizátor  
pražské integrované dopravy







# United navigation system: Legible Prague



16

čtvrtek 7. 4. 12:24

příští zastávka next stop

Flora

Olšanské hřbitovy

Želivského

Želivského

Vinohradské hřbitovy

Krematorium Strašnice

Vinice

Solidarita

Zborov – Strašnické divadlo

Limuzská

Nové Strašnice

Depo Hostivař

Malešická továrna

Na Homoli

cíl destination

Ústřední dílny DP

1 kolej track

Zličín 2:47

Zličín 6:12

Zličín 10:32

pondělí 18. 10. 2024 14:58:57

2 kolej track

Černý Most 2:32

Černý Most 5:32

Černý Most 8:32

pondělí 18. 10. 2024 14:58:57







# Microbuses for disabled persons „BEZBA“

- Service for heavily-impaired persons
- New contract with 2 operators since 2022
- 35 wheelchair-accessible specially adapted minibuses (2 categories)
- Prague and close surrounding
- ROPID call and control center





# Bikesharing in public transport

- Every long-term ticket holder can use public bike 4 times a day for 15 minutes for free
- Trial service from 11/2021
- 2 operators
- Now preparation for long-term service (tender)





Thank you for your attention.

[ropid@ropid.cz](mailto:ropid@ropid.cz)

Praha - Zahradní Město



**pid** pražská integrovaná  
doprava