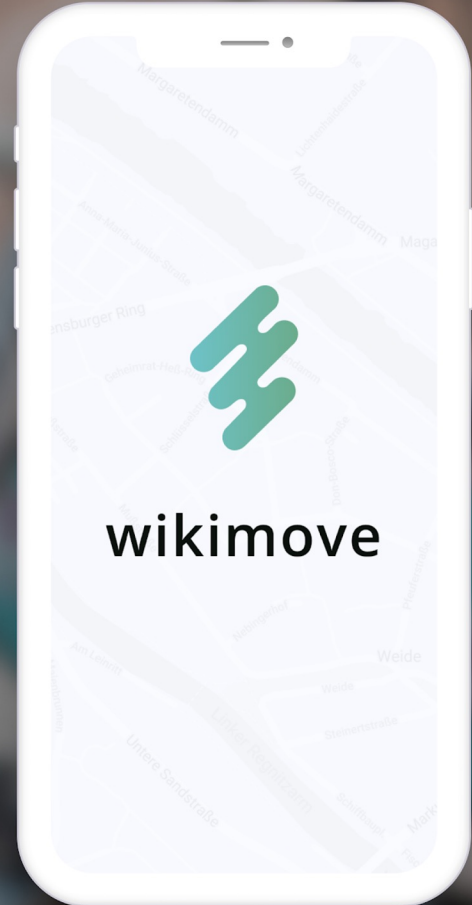




**Putting Cities in Control of Mobility as a Service**





## PROBLEM (Public Transportation)



9€ per month and still not good enough...?





## OUR MISSION



**Empower Cities and put them in the LEAD of the Mobility Transition**  
and increase the adoption of public transportation



## TEAM

### DANIEL WOLPERT

Co-Founder CEO &  
Head of **Business Dev.**



#### Education & Experiences

M. Sc. Technologie Management,  
B. Sc. Renewable Energy Engineering,  
Architecture & Urban Planning



### MICHAEL FEDERLIN

Co-Founder &  
Head of **Product**



#### Education & Experiences

M.Sc. Software Engineering  
B. Eng. Electrical Engineering Information Technology



#### Education & Experiences

Professor Computer Science  
M. Sc. Information Systems,  
B. Sc. Computer Science, MBA Business



### MARCO GLORIA

CTO & Head of **Software Dev.**



### VIEW THANYA

UX/UI **Designer**



#### Education & Experiences

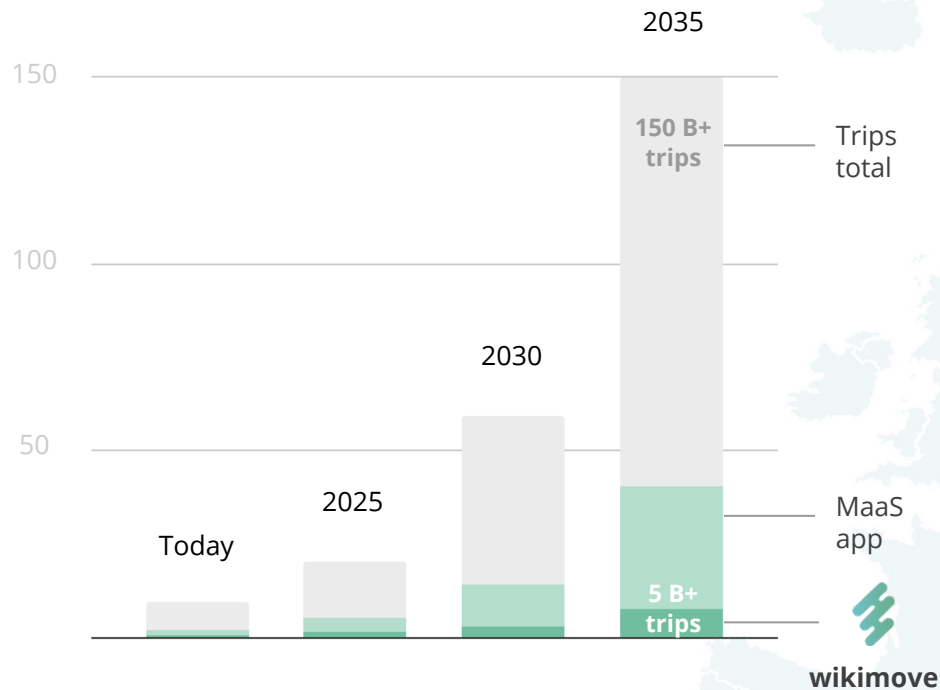
M. Sc. Human-Computer Interaction  
B.Sc. Information Technology







## MARKET SIZE



EUROPE :

**4,000+ cities**  
**>25k inhabitants**

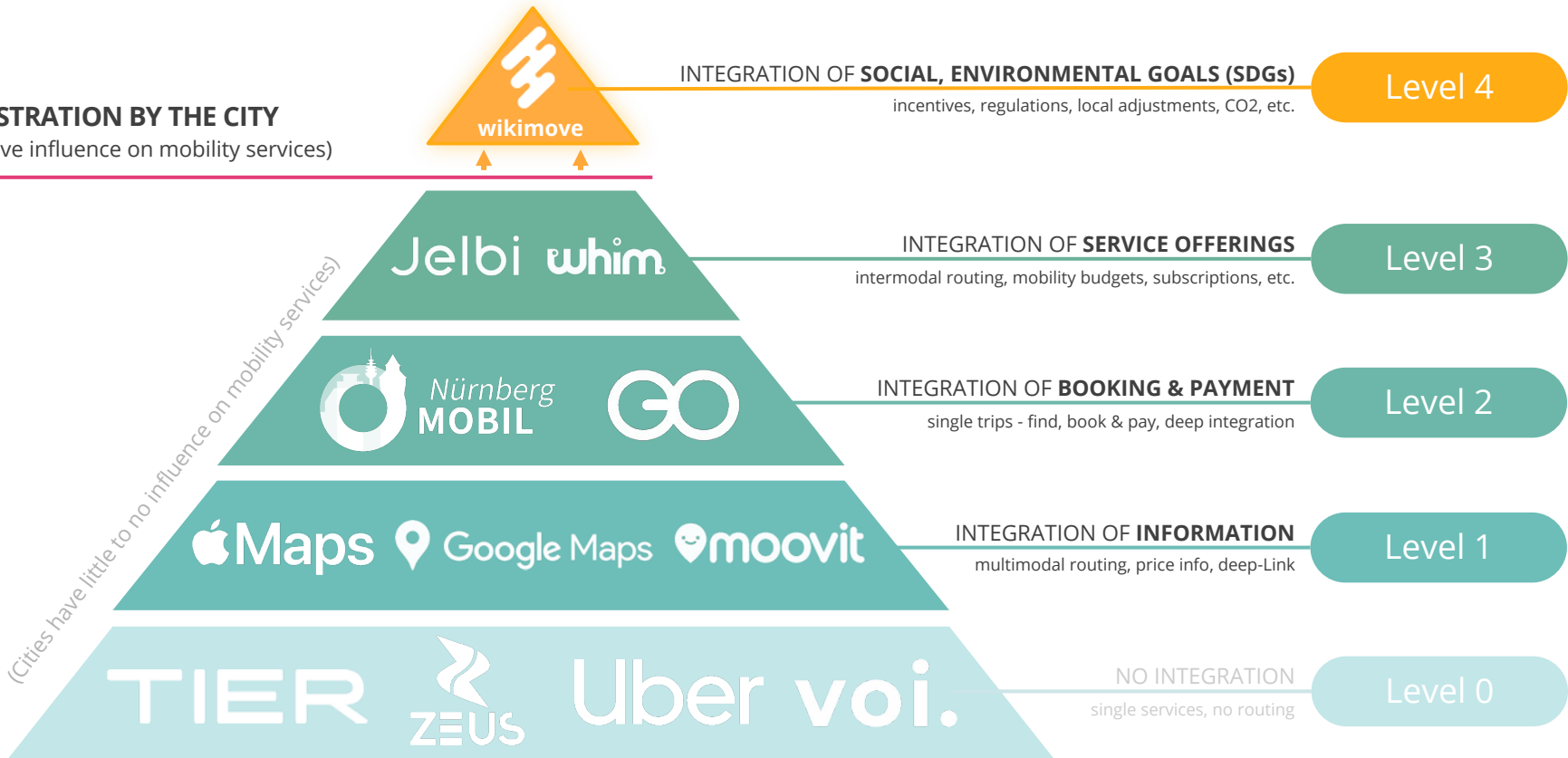
*1 of 4 trips will be booked on a MaaS app like wikimove*



# THE LANDSCAPE OF MaaS

## ORCHESTRATION BY THE CITY

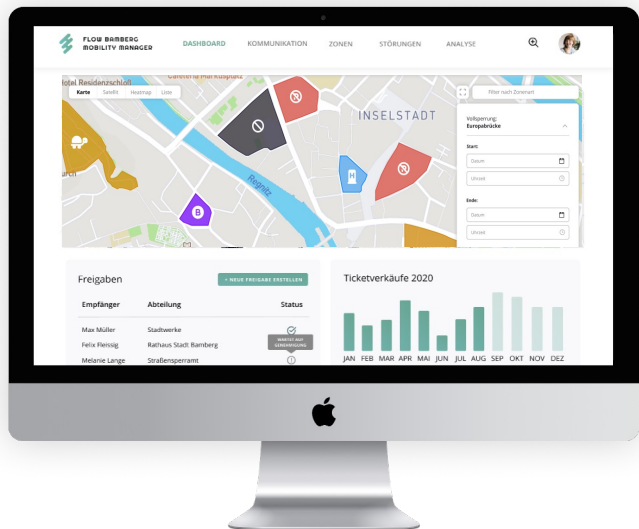
(Cities have influence on mobility services)





# PRODUCT

Insights + Control



## Mobility Manager

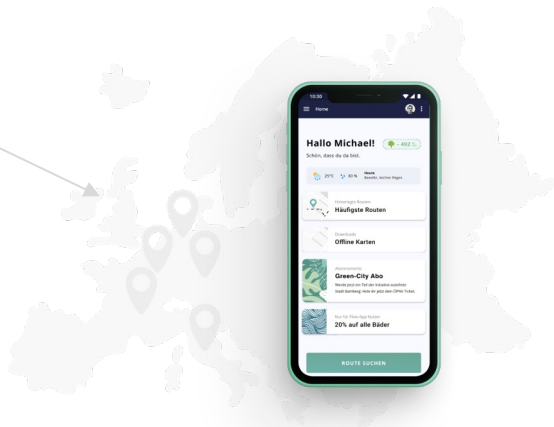
Local Management for Cities



## 3rd-party Apps

Level 0 - Level 3

compatible



## wikimove Level 4 MaaS App

Cross Regional App for End-Users



**GO-2-MARKET**

**Current Target Customers:**



Capital



City



Town



Village

Tier 2 - Tier 3 Cities

250,000 - 25,000 citizens

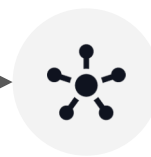
**Market-Entry Strategy:**

Product  
(local demonstrator)



Bamberg (Tier 2)  
in 2023

Interoperability  
(expansion Germany)



Tier 2/3 cites  
in 2024

Scalability  
(expansion Europe)



Tier 1/2/3 cites +  
counties in 2025



## OUR CUSTOMERS



“

*wikimove's solution manages to solve a multidimensional problem like nothing else has done before. Every city should have it”*

**Peter Scheuenstuhl**

Head of Transportation City of Bamberg  
(Tier 2 City)



“

*If we fail to better understand and manage traffic, over-tourism will eventually destroy our tourism - think about it!”*

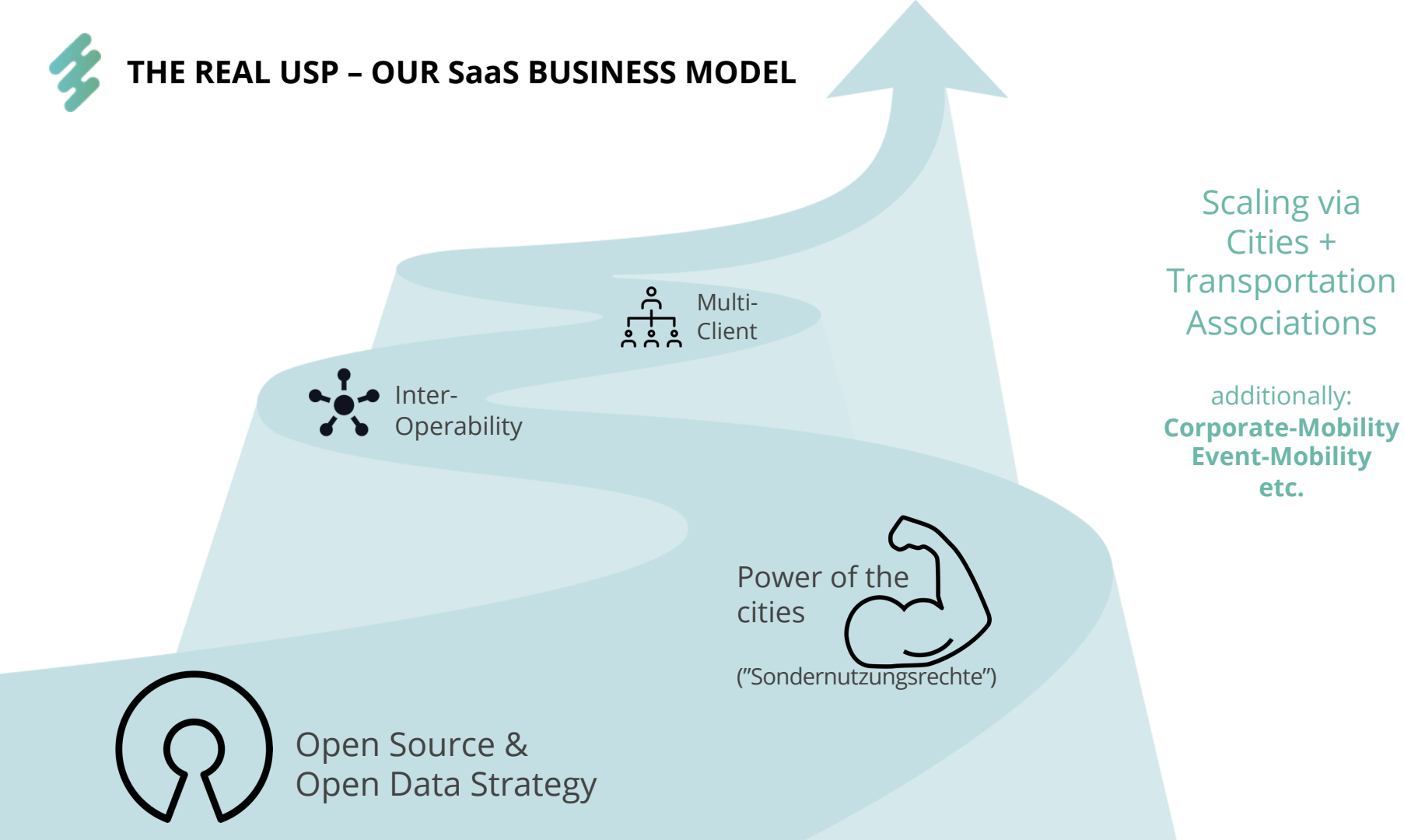
**Robert Seibold**

Project Manager Traffic Berchtesgaden  
(Tier 3 City)





## THE REAL USP – OUR SaaS BUSINESS MODEL



Open Source &  
Open Data Strategy



Multi-  
Client



Inter-  
Operability

Power of the  
cities



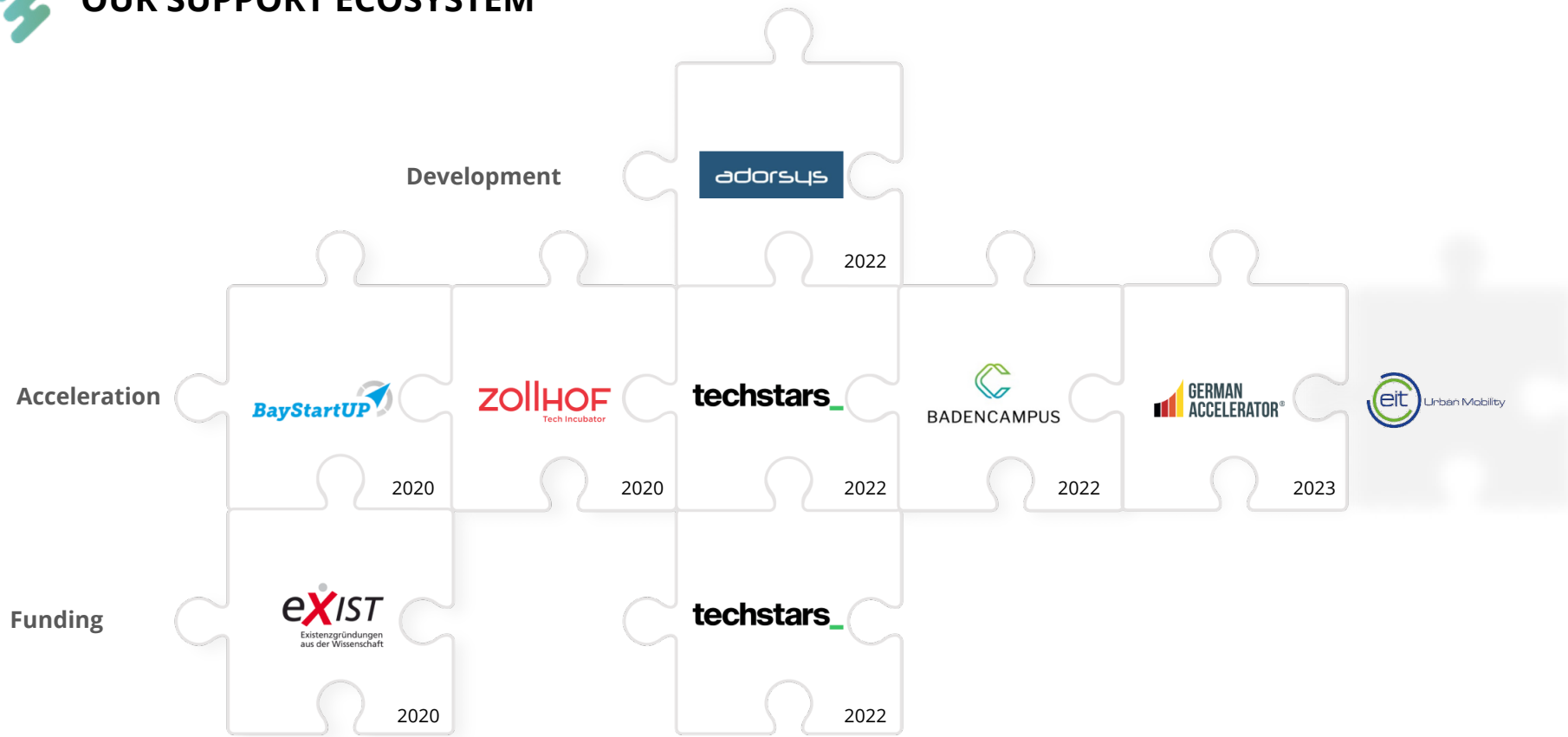
("Sondernutzungsrechte")

Scaling via  
Cities +  
Transportation  
Associations

additionally:  
**Corporate-Mobility**  
**Event-Mobility**  
etc.



## OUR SUPPORT ECOSYSTEM





LET'S GET IN TOUCH!  
THANK YOU!

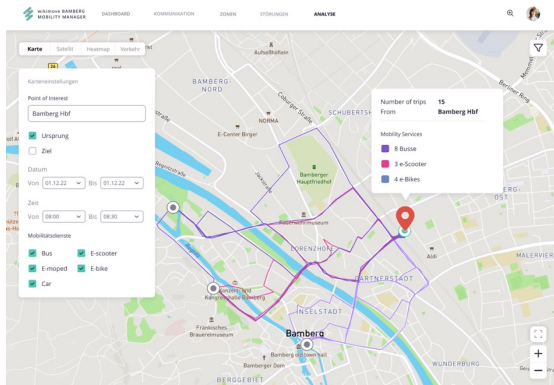


**DANIEL WOLPERT**

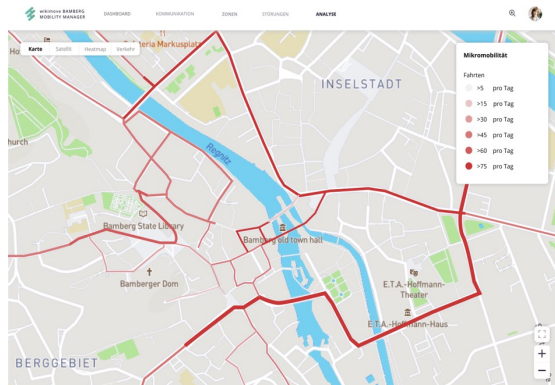
*Co-Founder/CEO*

[www.linkedin.com/in/daniel-wolpert](https://www.linkedin.com/in/daniel-wolpert)  
[daniel.wolpert@wikimove.me](mailto:daniel.wolpert@wikimove.me)  
(00) 49 173 6156263

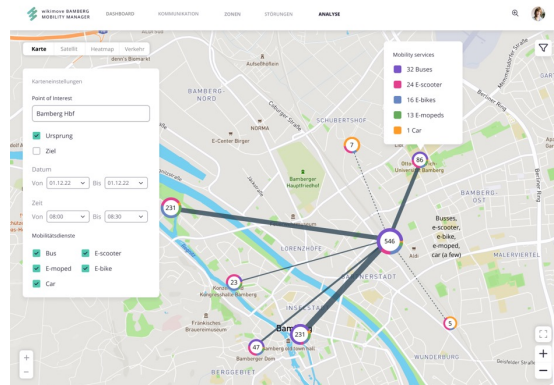
# EXAMPLES – MOBILITY ANALYTICS (MOBILITY MANAGER)



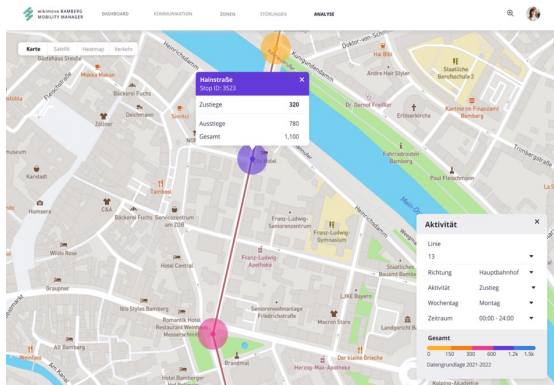
Modal Split



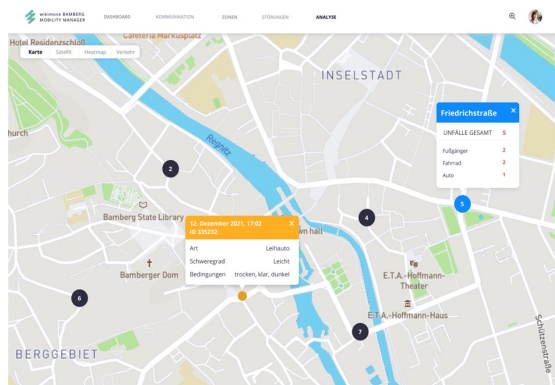
Heat Maps (Traffic)



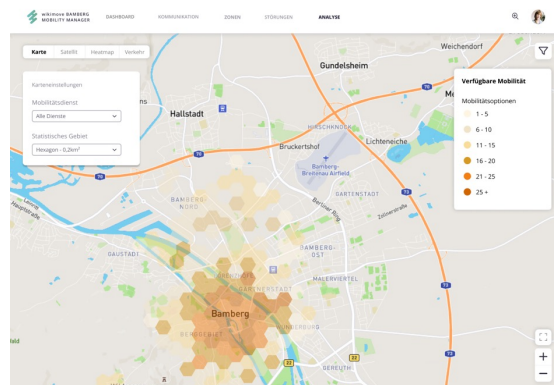
Origin Destination



Usage of Public Transit



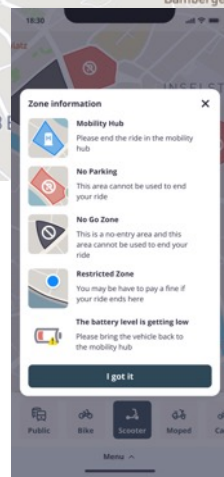
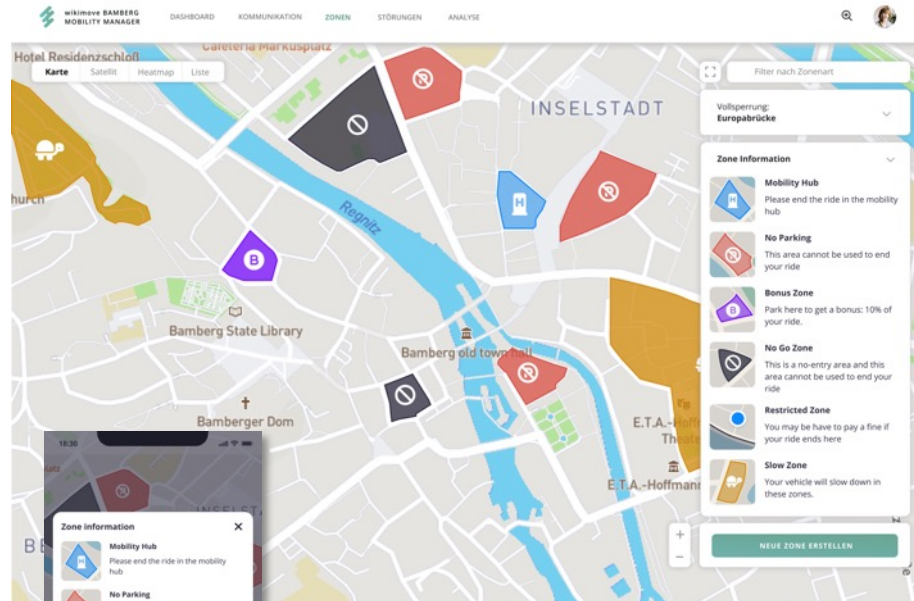
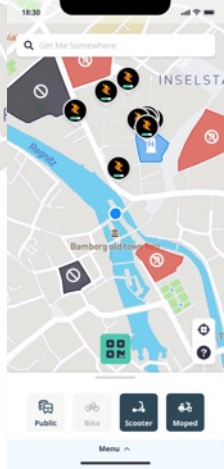
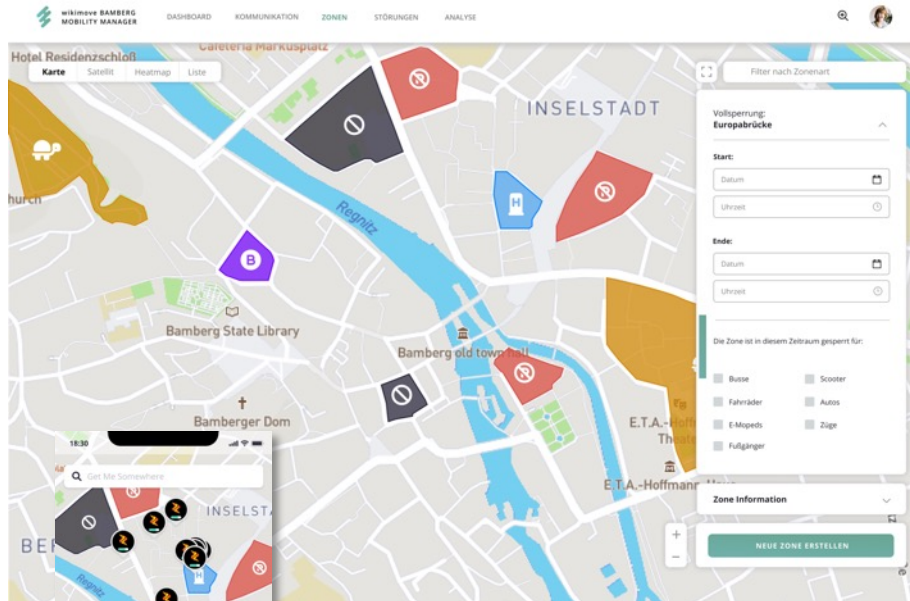
Incidents



Heat Maps (Distribution)



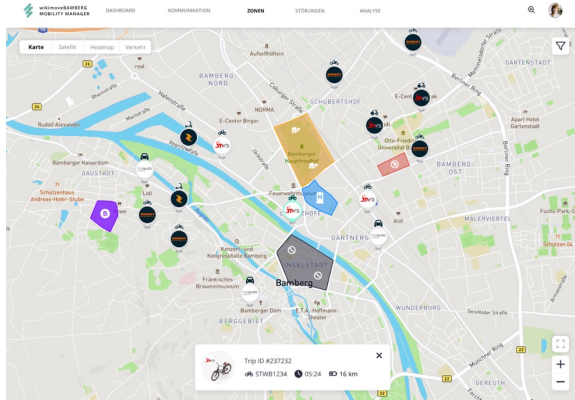
# EXAMPLES – MOBILITY ORCHESTRATION (MOBILITY MANAGER)







# EXAMPLES – MOBILITY OPERATION (MOBILITY MANAGER)

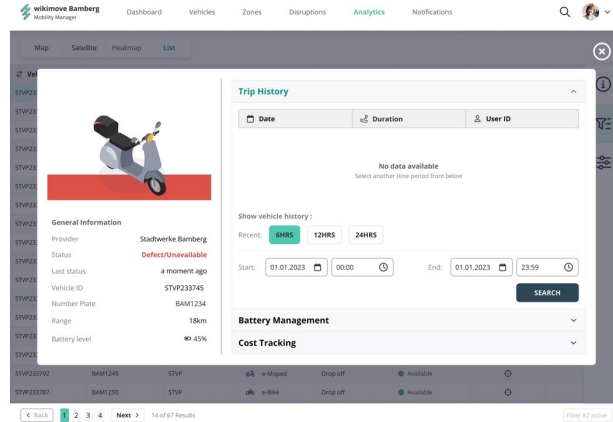


Map View

The List View displays a table of vehicle data. The table has columns for 'Vehicle ID', 'Licence Plate', 'Provider', 'Vehicle Type', and 'Last Event Type'. A sidebar on the right contains 'Filter Profiles' and 'Filter Set' options.

Vehicle ID	Licence Plate	Provider	Vehicle Type	Last Event Type
STWP233746	BAM1234	STVP	e-Moped	Drop off
STWP233747	BAM1236	STVP	e-Moped	Drop off
STWP233750	BAM1237	STVP	e-Moped	Drop off
STWP233753	BAM1238	STVP	e-Moped	Drop off
STWP233747	BAM1239	STVP	e-Moped	Drop off
STWP233741	BAM1240	STVP	e-Moped	Drop off
STWP233759	BAM1241	STVP	e-Moped	Drop off
STWP233772	BAM1242	STVP	e-Moped	Drop off
STWP233723	BAM1243	STVP	e-Moped	Drop off
STWP233776	BAM1244	STVP	e-Moped	Drop off
STWP233711	BAM1245	STVP	e-Moped	Drop off
STWP233713	BAM1246	STVP	e-Moped	Drop off
STWP233716	BAM1247	STVP	e-Moped	Drop off
STWP233718	BAM1248	STVP	e-Moped	Drop off
STWP233792	BAM1249	STVP	e-Moped	Drop off
STWP233787	BAM1250	Zeus	e-Scooter	Drop off

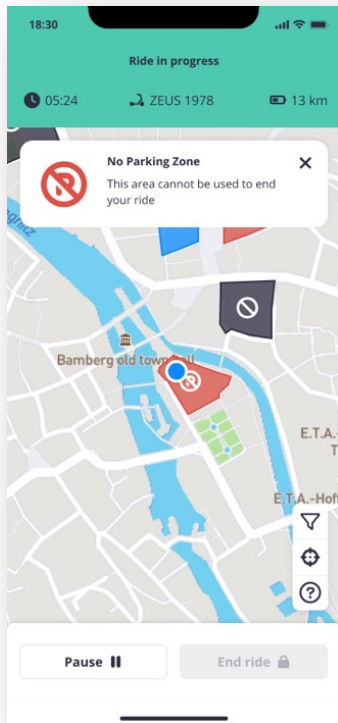
List View



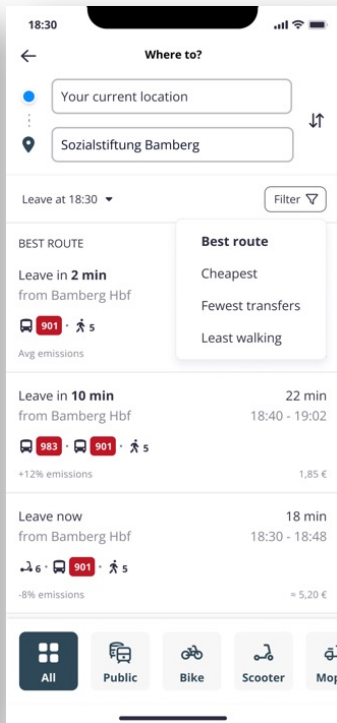
Vehicle / Usage Analysis



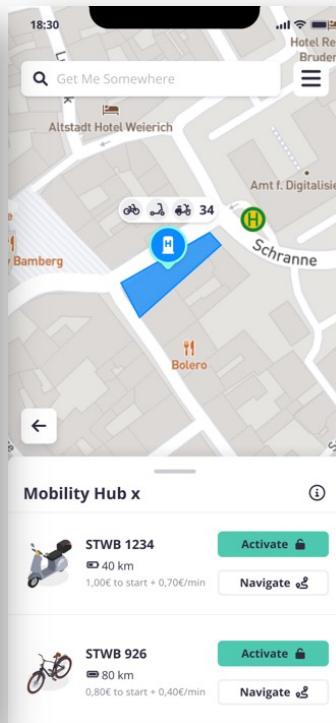
# WIKIMOVE BAMBERG – USER APP



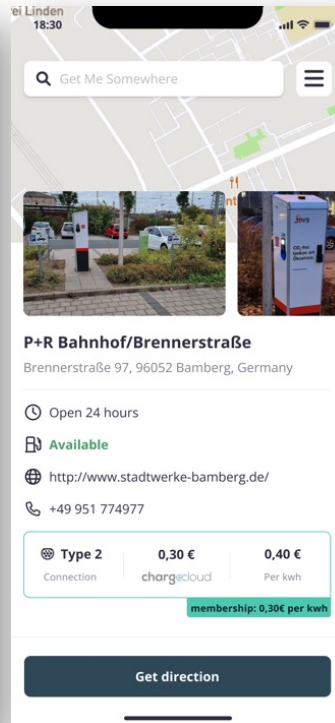
Orchestration



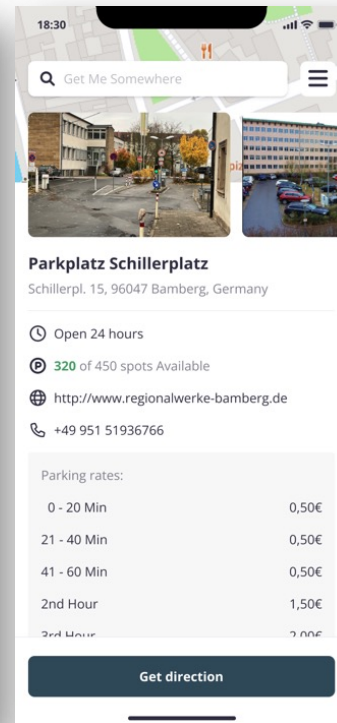
Intermodal Trip Planning



Mobility Hubs



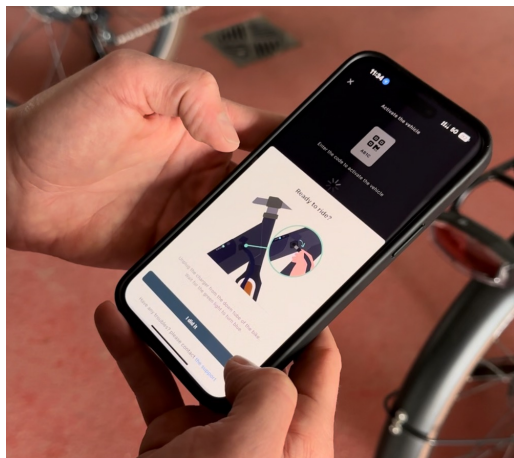
e-Charging Infrastructure



Parking Management



# IMPRESSIONS OF WIKIMOVE BAMBERG (Mobility Station LAGARDE)



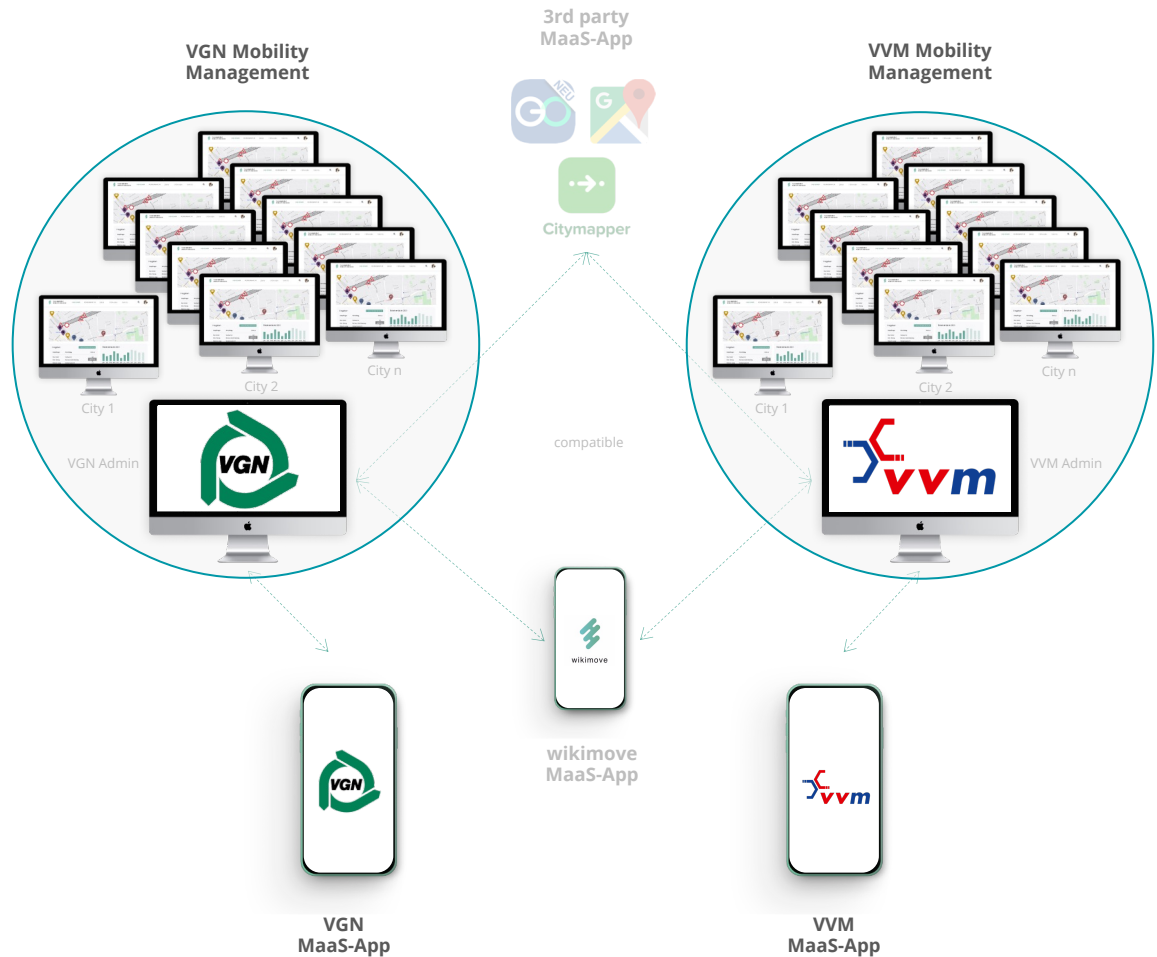


# Mobility Mgmt. & MaaS at an association level

## Combination of:

### Local mobility management and overarching MaaS-App

- Analysis, demand assessment and control at local level
- As a standalone and retrofittable solution
- Compatible with own (existing app of the association) or 3rd-party platforms/apps (including the wikimove app)

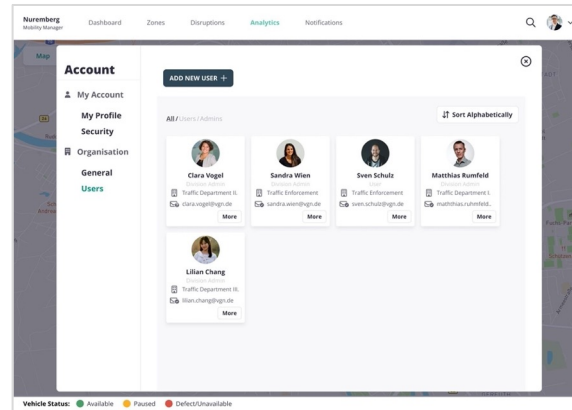
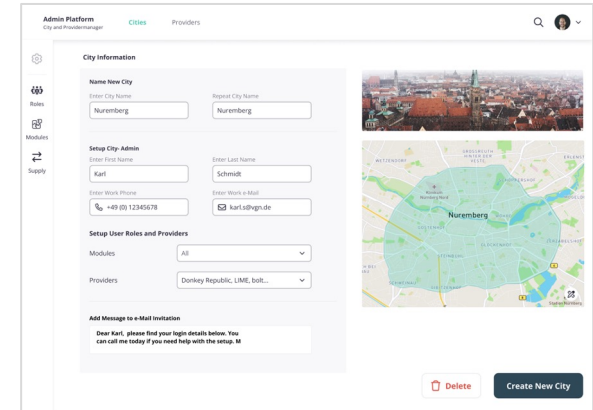
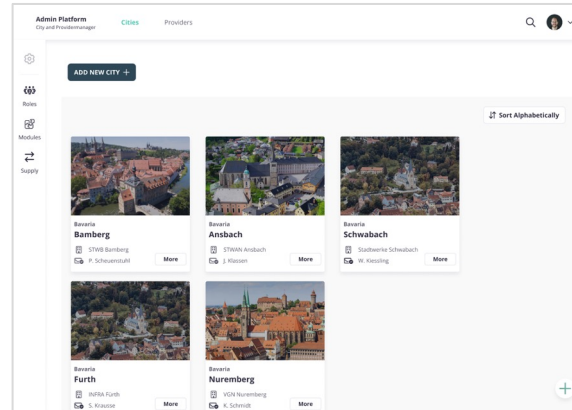


# Mobility Management at an association level

## The entire association - in one platform

Create and manage cities/counties - Add employees/authorized persons with a few mouse clicks.

- Work efficiently with a platform that dynamically adapts to the needs of the cities/counties - easily define the rights of employees/users by adding modular functions and role-based access control
- Minimal administrative effort - through the City Admin function, entire departments including users can be created with little effort



[Demo-Video](#)



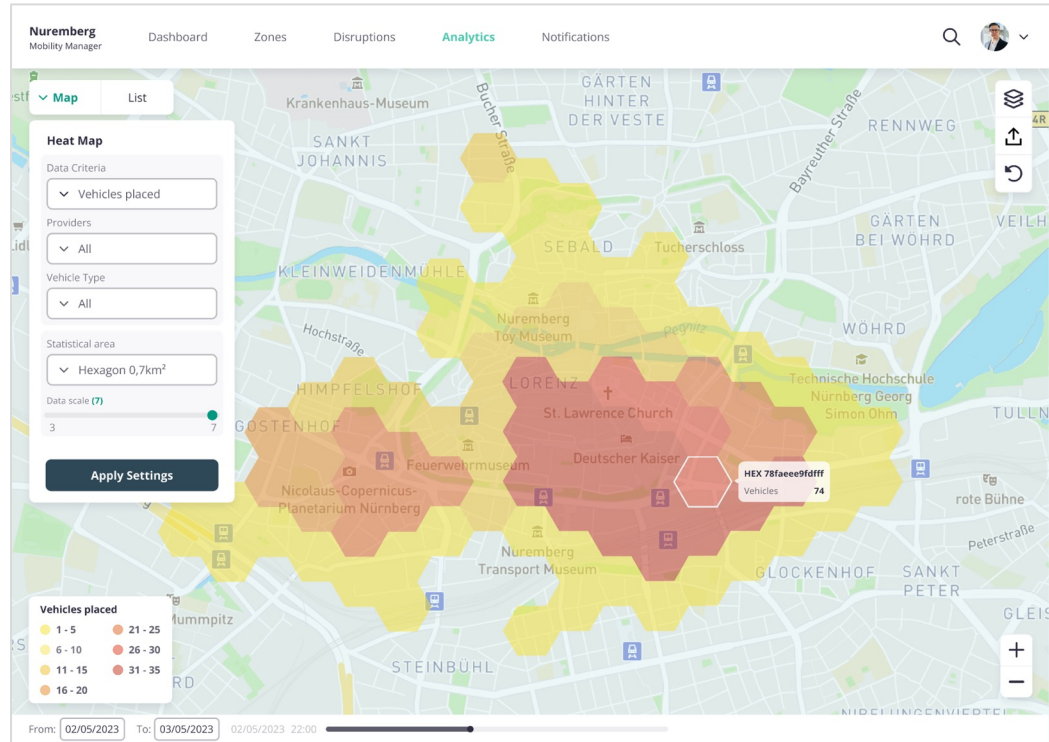
# Mobility Management at an association level

## Insightful analysis functions

- Extensive insight into the traffic situation at the city or interconnection level in order to make the right decisions in traffic management
- Identify hotspots - to match mobility supply and demand and increase customer satisfaction

## Further analyses, e.g.:

- Demand mapping
- Origin-Destination-Maps
- Points of Interest
- Incidents
- etc.



[Demo-Video](#)

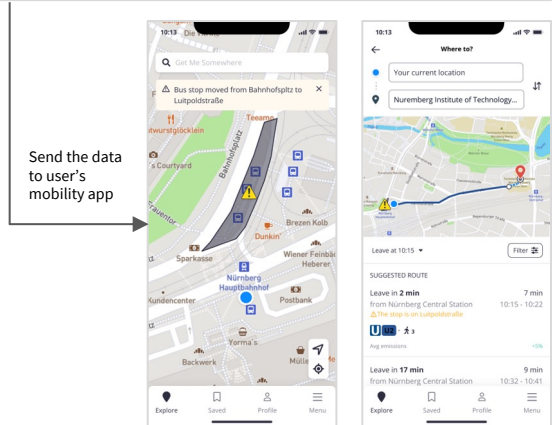
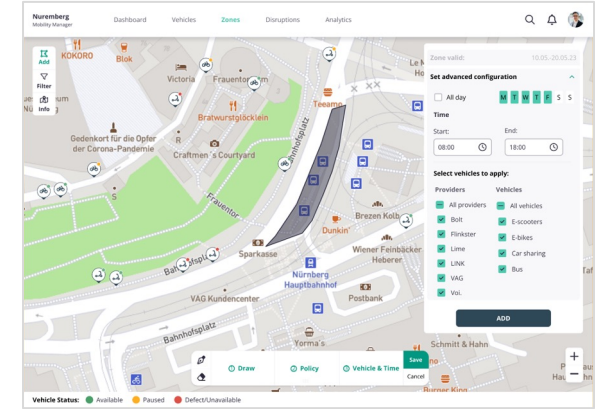
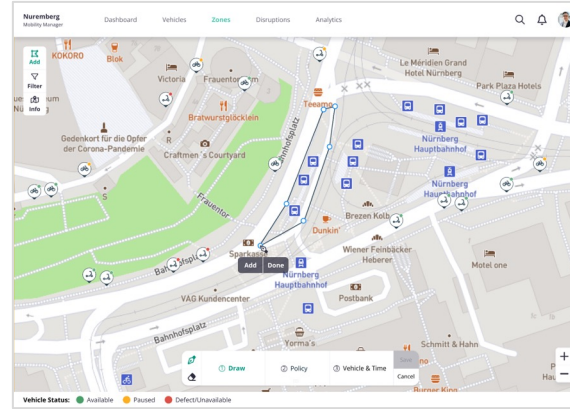
# Mobility Management at an association level

## Traffic Management

- Create rules for specific areas of the city to regulate traffic according to municipal goals
- and to get customers from A to B via the fastest (re)route and in a climate-friendly way

## Optimized route planning

- Consideration of obstacles (construction sites, accidents, etc.)
- Consideration of road surfaces (cobblestones)
- Consideration of personal preferences (time, cost, etc.)
- Consideration of municipal goals (CO2, traffic volume, etc.)



# Mobility Management at an association level

## Forward-looking fleet management

- Holistic overview of the vehicles in the fleet within the city/area of responsibility
- Real-time information and notifications on the status of pending maintenance and faults
- Association-wide or locally on a client basis

The screenshot displays the Nuremberg Mobility Manager interface. At the top, there's a navigation bar with 'Dashboard', 'Zones', 'Disruptions', 'Analytics', and 'Notifications'. The main area features a map of Nuremberg with various colored zones and vehicle icons. A pop-up window shows details for an 'e-Scooter' (Lime), including its status (Paused) and last status update. Below the map, a table lists selected vehicles with columns for Vehicle ID, Licence Plate, Provider, Vehicle Type, Last Event Type, Current State, Battery Level, and Position. A legend at the bottom indicates vehicle status: Available (green), Paused (orange), and Defect/Unavailable (red).

Vehicle ID	Licence Plate	Provider	Vehicle Type	Last Event Type	Current State	Battery Level	Position
VAG233748	599WPL	VAG	e-bike	Drop off	Available	73%	
VAG233200	302KAA	VAG	e-bike	Booked	Paused	66%	
LIME233444	503IGN	LIME	e-Scooter	Drop off	Available	42%	
LIME233324	092HPW	LIME	e-Scooter	Booked	Paused	71%	
VOI233323	029FET	Vol.	e-Scooter	Drop off	Available	99%	

Vehicle Status: ● Available ● Paused ● Defect/Unavailable

**Name new zone:** e.g. City Festival

**Select a policy to apply:**

- Mobility Hub**: Rides have to end in the hub.
- No Parking**: This area cannot be used to end your ride - parking is generally or temporarily prohibited.
- No Go Area**: Driving in this area is not allowed, at specific times or 24/7.
- Restricted**: Set a fee per trip and/or activated vehicle.
- Low Speed**: Entrance in this area is permitted, however maximum speed limits will apply.

**NEXT**

**Save** **Draw** **Policy** **Vehicle & Time** **Cancel**